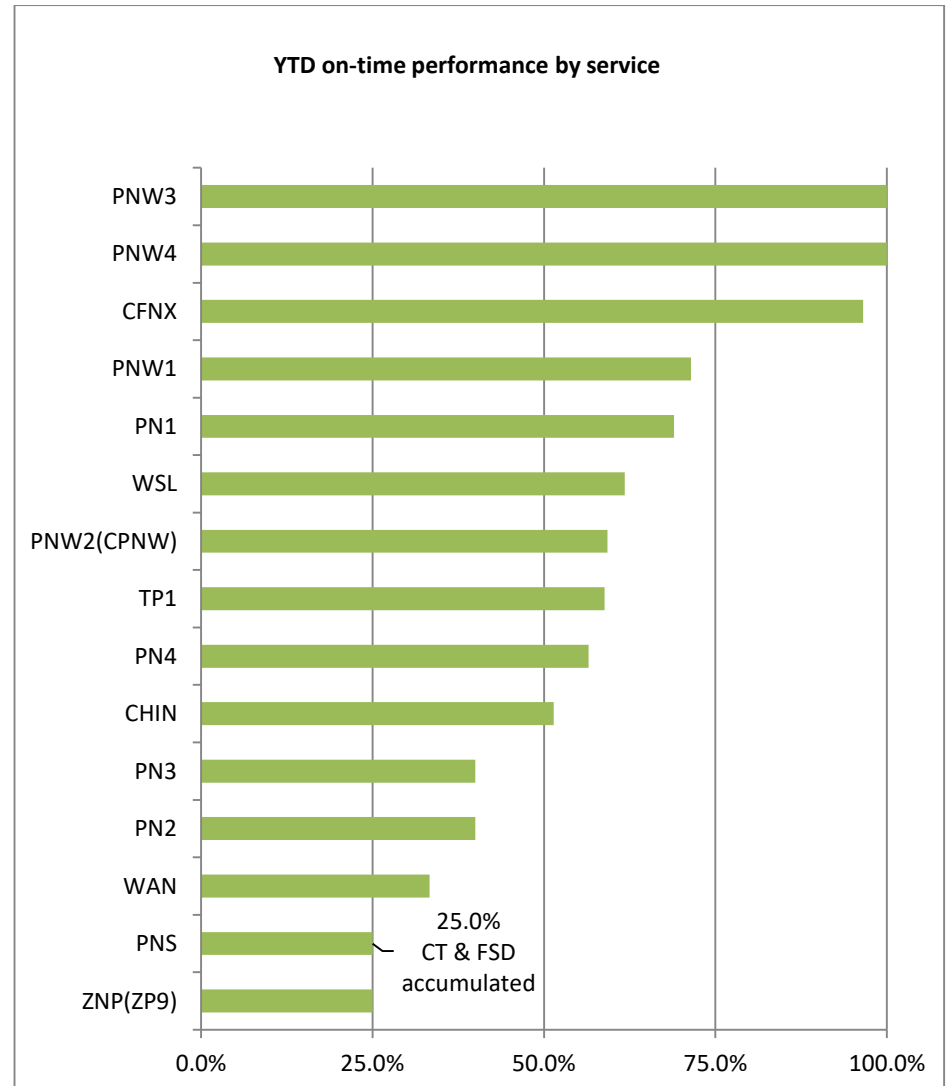


# Gateway Vessel On-time Performance September 2023

Service Name	On-time performance (+ 8 hours)		
	Sep-23	YTD 2023	YTD 2022
<b>Centerm</b>			
PN4	100.0%	56.5%	37.5%
PNW2(CPNW)	66.7%	59.3%	11.1%
TP1	50.0%	58.8%	0.0%
<b>Centerm</b>	<b>70.0%</b>	<b>53.7%</b>	<b>26.6%</b>
<b>Deltaport</b>			
PNW4	100.0%	100.0%	100.0%
PN1	100.0%	69.0%	0.0%
CHIN	60.0%	51.4%	10.7%
PN2	50.0%	40.0%	12.5%
PN3	25.0%	40.0%	0.0%
<b>Deltaport</b>	<b>64.7%</b>	<b>54.1%</b>	<b>18.4%</b>
<b>FSD</b>			
WSL	66.7%	61.8%	81.3%
PNS	0.0%	28.6%	56.0%
WAN	0.0%	33.3%	0.0%
<b>FSD</b>	<b>25.0%</b>	<b>45.2%</b>	<b>40.2%</b>
<b>Vanterm</b>			
CFNX	100.0%	96.6%	45.0%
PNW3	100.0%	100.0%	100.0%
PNW1	50.0%	71.4%	0.0%
<b>Vanterm</b>	<b>90.9%</b>	<b>89.2%</b>	<b>49.2%</b>
<b>Gateway</b>	<b>65.2%</b>	<b>59.6%</b>	<b>30.0%</b>



\* Note: due to labour disruption in July 2023, all ocean carriers were pardoned for the July Vessel On-time performance.