

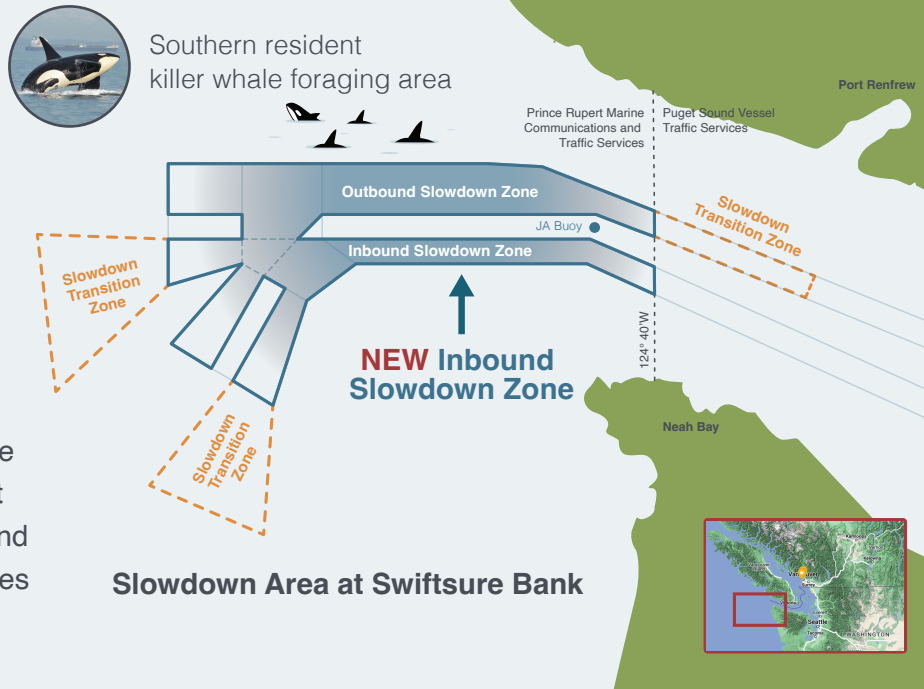
Voluntary ship slowdown trial at Swiftsure Bank

The ECHO Program has extended the voluntary ship slowdown trial at Swiftsure Bank to include the outbound *and* inbound shipping lanes – and **we need your help** to reduce ship noise in this key southern resident killer whale foraging area

Slow down for endangered whales

When: June 1 – October 31, 2023

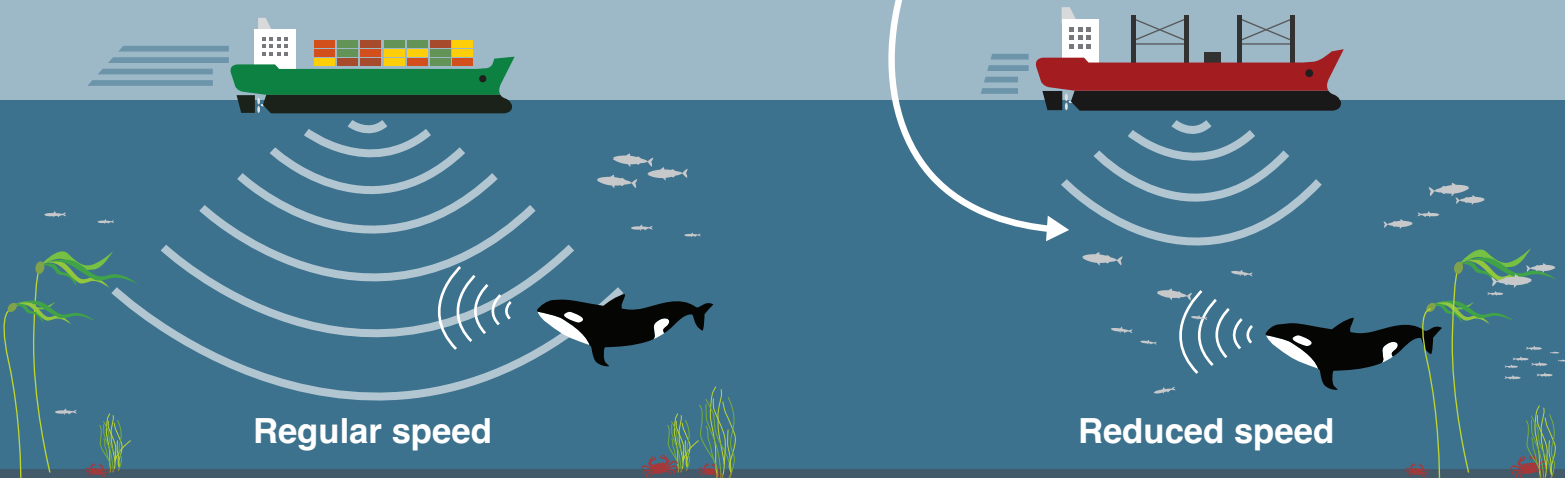
Where: The inbound and outbound shipping lanes at Swiftsure Bank, within southern resident killer whale critical habitat, and the treaty-protected Usual and Accustomed Fishing Area of the Makah Tribe and the maritime territory of the Pacheedaht First Nation, an area of significant cultural and spiritual value and where harvested resources of Indigenous nations are located



Slowing down makes a difference

Underwater sound intensity was reduced by nearly 40% during the ECHO Program's voluntary slowdown at Swiftsure Bank in 2020

Slowing down reduces underwater noise, which interferes with killer whales' ability to hunt, navigate, and communicate



Be part of the solution!

Help make a difference for at-risk whales



Confirm your intention to participate

Visit portvancouver.com/participate to confirm your intention to participate and be recognized on our website



Help spread the word

Ensure your fleet is aware of the voluntary ship slowdown trial at Swiftsure Bank, beginning on June 1, 2023



About the ECHO Program

The Enhancing Cetacean Habitat and Observation (ECHO) Program is a world-leading program led by the Vancouver Fraser Port Authority to better understand and reduce the impacts of commercial shipping on at-risk whales.

In collaboration with government, the marine transportation industry, environmental groups, and Indigenous communities, the ECHO Program coordinates underwater noise reduction initiatives throughout the Salish Sea. Learn more at portvancouver.com/echo