

Le présent message contient des renseignements importants. Si vous avez besoin d'une traduction, veuillez communiquer avec [info@transmountain.com](mailto:info@transmountain.com).



TRANS MOUNTAIN

Construction Update Notice

## WESTRDIGE MARINE TERMINAL: Update on Extended Work Hours

We're working in your neighbourhood of Burnaby, BC

**September 2022 - March 2023\***

As a neighbour of Trans Mountain's Westridge Marine Terminal (WMT), you are receiving this Update Notice to ensure that you are kept informed of construction activity at the Terminal as part of the Trans Mountain Expansion Project. On February 18, 2022 Trans Mountain announced an updated Project Schedule, with mechanical completion anticipated to occur in Q3 2023\*. Please visit [transmountain.com/map](https://transmountain.com/map) to access the latest Project information and sign up for automatic updates.

Trans Mountain continues in-water and foreshore construction at WMT including pile driving for marine dock structures, electrical and utility work and other activities in preparation for the installation of vessel loading equipment and emergency response enhancements.

### **APPROVED EXTENDED WORK HOURS – WMT FORESHORE AREA**

The Vancouver Fraser Port Authority (the port authority) recently approved a six-month extension to a limited scope of construction activities overnight at the Terminal plus an additional scope of work that will occur on Sundays. This extension permits the continuation of activities at the Terminal previously approved to occur 24 hours per day, Monday to Saturday. The six-month extension is effective September 4, 2022, until March 1, 2023. Some essential works will also occur on a limited number of Sundays between 8:00 am and 5:00 pm as described below.

All general construction activities related to the Project currently take place during regular construction hours between 7:00 am and 8:00 pm Monday to Saturday as stipulated under the port authority permit PER #19-162. Sunday and night work **will not** include pile driving operations; those activities will continue to occur only during daytime regular construction hours.

There is constrained daytime site access to WMT due to existing marine terminal operations which need to continue to deliver oil safely and efficiently to British Columbia and other markets.

To meet Project schedule constraints and accommodate the terminal's operations, some essential works need to be completed during a Sunday day shift and Monday to Saturday night shift.

<sup>1</sup>Westridge Environmental Protection Plan, Condition 81 [CER Filing ID A6G2L1]: <https://apps.cer-rec.gc.ca/REGDOCS/Item/View/3581455> (Accessed July 25, 2022)

<sup>2</sup>Westridge Marine Terminal Nightshift Noise Management Plan Addendum to Condition 80 [CER Filing ID A7I3K1]: <https://apps.cer-rec.gc.ca/REGDOCS/Search?dn=A7I3K1> (Accessed July 25, 2022)

*\*Dates and times are subject to change and construction work is subject to necessary approvals and permits.*



All work would adhere to the requirements and conditions originally outlined in port authority permit #19-162. This includes abiding by all noise, lighting and environmental requirements in the Project Permit Application as well as the Westridge Marine Terminal Environmental Protection Plan (CER Filing ID A6G2L1)<sup>1</sup> and Noise Management Plan (CER Filing ID A7I3K1)<sup>2</sup>. All emergency plans and resources would be maintained through these extended work hours.

## **APPROVED NIGHT SHIFT ACTIVITIES**

---

### **Foreshore Construction**

Construction work will continue to take place in areas of the foreshore now that ground improvement works have been completed. The utility installation work will continue for an additional six-month period and include the following activities:

- Excavation of trenches, backfilling and compaction of fill
- Installation of utilities such as conduit, pipe, manholes and sumps
- Operations to manage spoil materials
- Concrete works and installation of structural steel
- Pipe fitting and welding
- Installation of electrical cable, devices, instruments and lighting
- Hydrostatic testing

## **HYDROSTATIC TESTING**

---

Trans Mountain has identified a need to perform hydrostatic testing within terminal property on Sunday day shifts due to exclusion zones and impacts to concurrent work activities.

This need stems from the limited workspace during standard construction activities that take place throughout the week at WMT. This combined with having constrained construction access and frequent road closures due to ship berthing, loading and offloading activities required for Trans Mountain operations has caused schedule delays. To meet Project schedule constraints and accommodate the terminal's operations, some essential works need to be completed during a Sunday day shift.

Hydrostatic testing is a well-established industry practice used to confirm the ability of the pipeline to operate safely and determine if any repairs are needed. The process includes filling the segment of pipe with water to pre-determined limits of pressure, for an extended period.

During the test the pipeline will be monitored by personnel with precise instrumentation to detect any signs of a release. If a release is detected, the test will be suspended, and the pipeline repaired. Trans Mountain's personnel will remain on standby for the duration of the test to enable rapid mobilization and response as outlined in the Reactivation Hydrostatic Test Emergency Preparedness and Response Plan.



## PROPOSED MITIGATIONS TO MINIMIZE DISTURBANCE

---

Trans Mountain and its acoustic consultants have completed an assessment of the potential noise sources related to the construction activity mentioned above and anticipate that noise levels associated with this construction activity will remain within the nighttime Permissible Sound Levels outlined in the Project permit and the Westridge Noise Management Plan Night Shift Addendum which meet with BC Oil and Gas Commission Guidelines and were approved by the CER.

Trans Mountain is proposing to put in place the following mitigation measures to minimize potential disturbance from night shift construction activities:

- Where possible limit use of generators and light plants
- Noise barriers to be deployed close to noisy activities to block effects on residential areas, including north shore areas. This includes the previously installed 12' sound wall at the Terminal to minimize effects of drilling operations on residential neighbourhood.
- Use of directional lighting to limit light pollution to surrounding area (people/birds)

**Sunday work will occur between 8:00 am and 5:00 pm only (no night shift) and includes:**

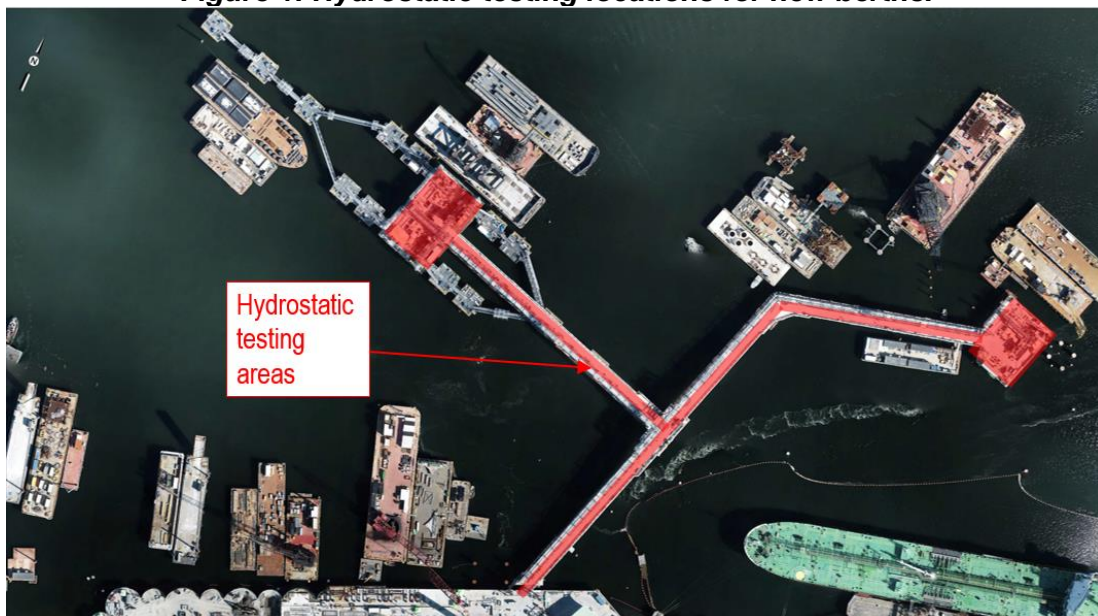
- Hydrostatic testing
- Shut down of equipment not in use and minimize vehicle use on site
- Continuous noise monitoring and deployment of noise mitigations as per the noise management plan

Offsite parking with shuttle transportation to minimize vehicle traffic accessing the site.

## SITE LOCATION

---

**Figure 1: Hydrostatic testing locations for new berths.**



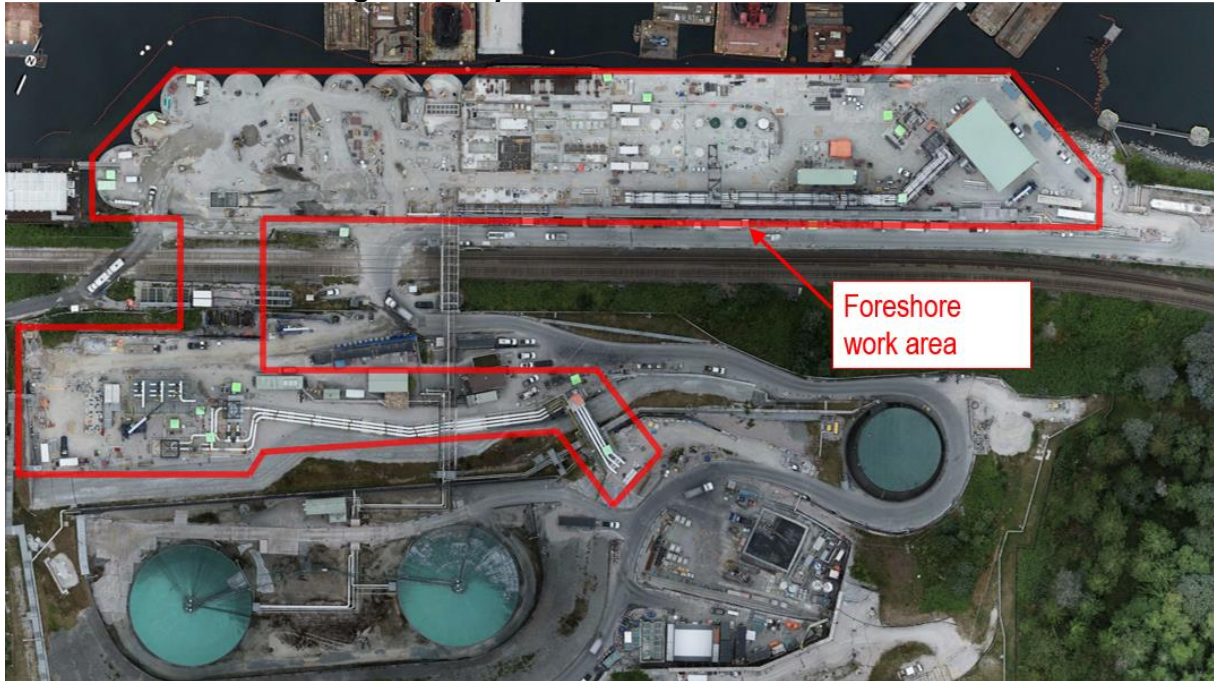
Le présent message contient des renseignements importants. Si vous avez besoin d'une traduction, veuillez communiquer avec [info@transmountain.com](mailto:info@transmountain.com).



TRANS MOUNTAIN

Construction Update Notice

**Figure 2: Expanded foreshore work area.**






Should you have concerns regarding this work, please contact is at **1.866.514.6700** or [info@transmountain.com](mailto:info@transmountain.com)

For questions for the port authority's review of these proposed works, please call **604.665.9004** or email [community.feedback@portvancouver.com](mailto:community.feedback@portvancouver.com)

Visit our Westridge Marine Terminal web page at: [transmountain.com/westridge-marine-terminal](http://transmountain.com/westridge-marine-terminal)

**CONTACT US:**  
Trans Mountain

 [info@transmountain.com](mailto:info@transmountain.com)  
 **1.866.514.6700**  
 [transmountain.com](http://transmountain.com)



 @TransMtn



[youtube.com/transmtn](http://youtube.com/transmtn)



PO Box 81018  
Burnaby, BC V5H 3B0

**Pipeline or construction  
emergency?**

**Call 24/7: 1.888.876.6711**