



Recreational Docks – Municipal information

Village of Belcarra

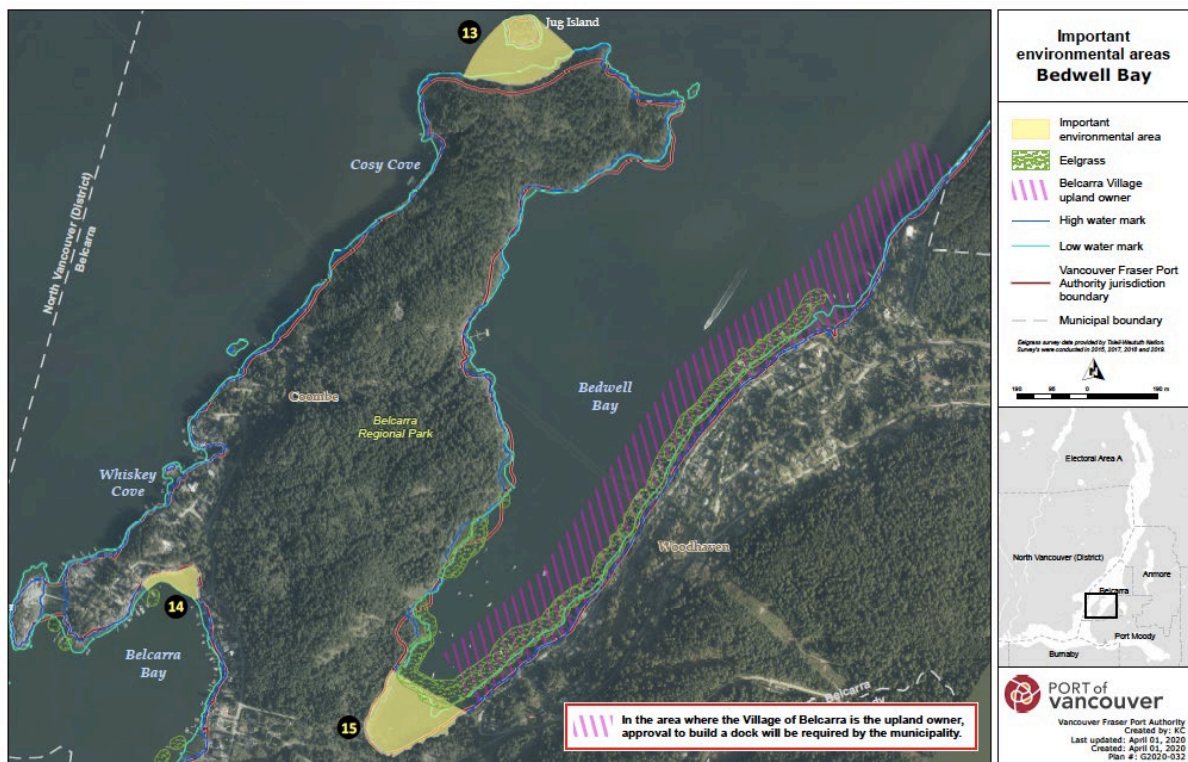
Please read the information below as it contains important information relating to the permitting of new docks within the municipality of Belcarra and may affect your application process.

Bedwell Bay

The port authority is not accepting applications for docks (private or shared) in Bedwell Bay at this time. Any application(s) received will be cancelled.

This restriction will remain in place while the port authority undertakes additional work with stakeholders and First Nations towards a long-term management approach for Bedwell Bay, which may result in changes to restrictions and/or mitigation measures in connection with recreational docks.

We are still accepting applications outside of Bedwell Bay; however, project reviews have been slowed to allow for more regional consultation on recreational docks.



Wishing to build a dock outside of Bedwell Bay?

Before you build your dock, you'll need to review the guidelines and submit a [Project and Environmental Review permit](#) application to the port authority.

- Once approved, apply for a licence.
- Find out more by reviewing our guidelines.
- Review the Recreational dock guidelines – Burrard Inlet.
- Consider a shared dock.
- Apply.
- Once approved, build your dock.

For more information, contact us via email to per@portvancouver.com or by phone at 604.665.9047.