



Commissioner Street Rail Expansion Project

Kiley Gibson, Specialist, Environmental Permitting



Agenda



- Project Description
- Project Timeline & Execution Plan
- PER Status
- Completed Studies
- Potential Project Effects & Mitigation Strategy
- Engagement
- Discussion and next steps

Project Description - Purpose and Rationale



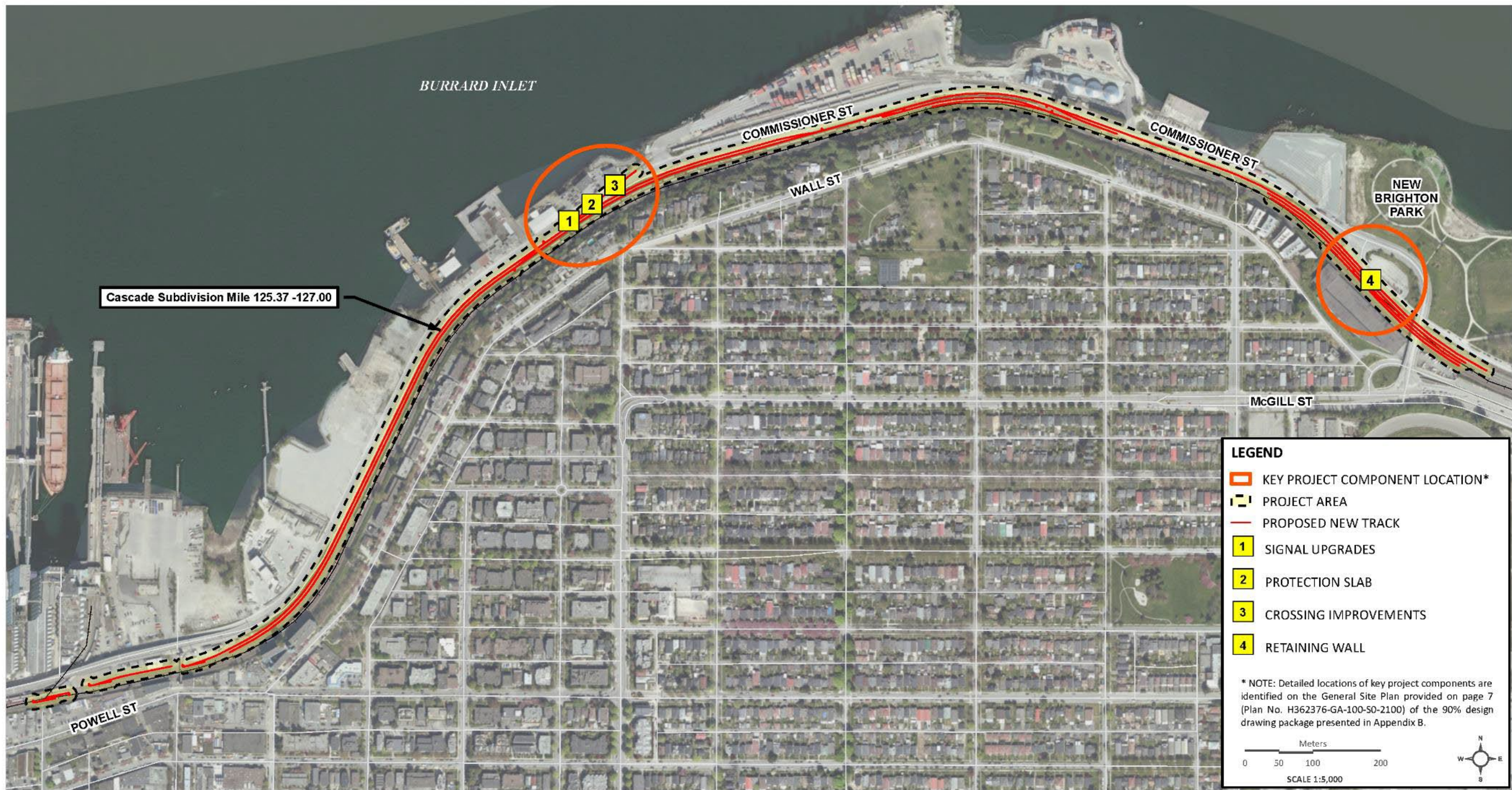
- Improve mainline fluidity and switching operations of loaded and empty railcars
- Increase railcar storage capacity
- Support trade growth and increase local and national jobs

Project Description - Project Components

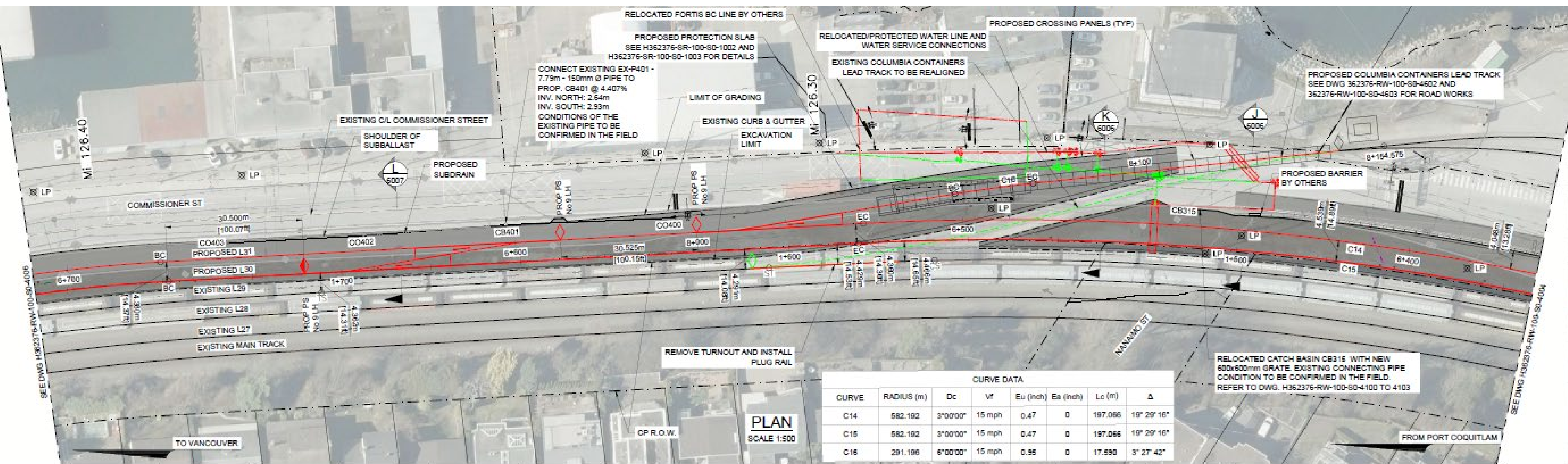


- Protection, upgrade or relocation of existing buried utilities
- Two new yard tracks
- Adjustments or improvements to existing crossings, turnouts, crossovers, and tracks, including Columbia Containers lead track and new crossing warning system with bells, lights and gates
- A retaining wall along New Brighton Road (84m long/3m high)

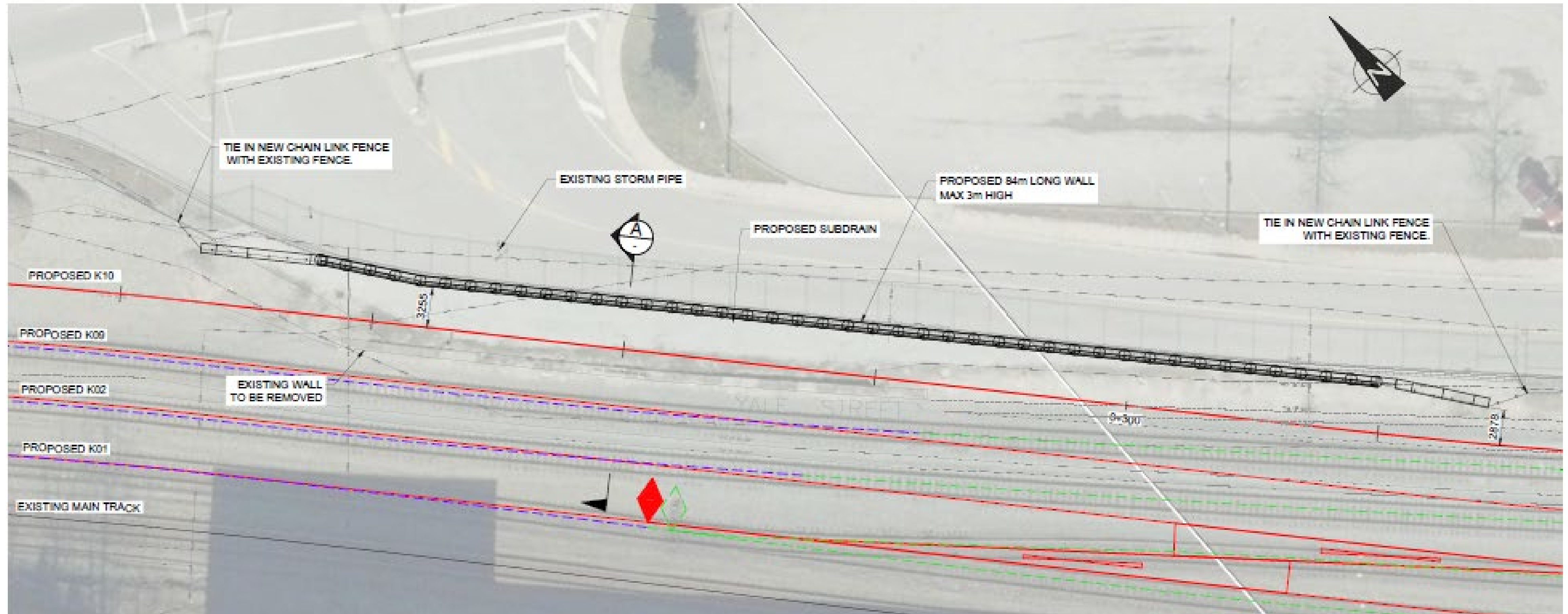
Project Description – Project Location



Project Description – Project Location



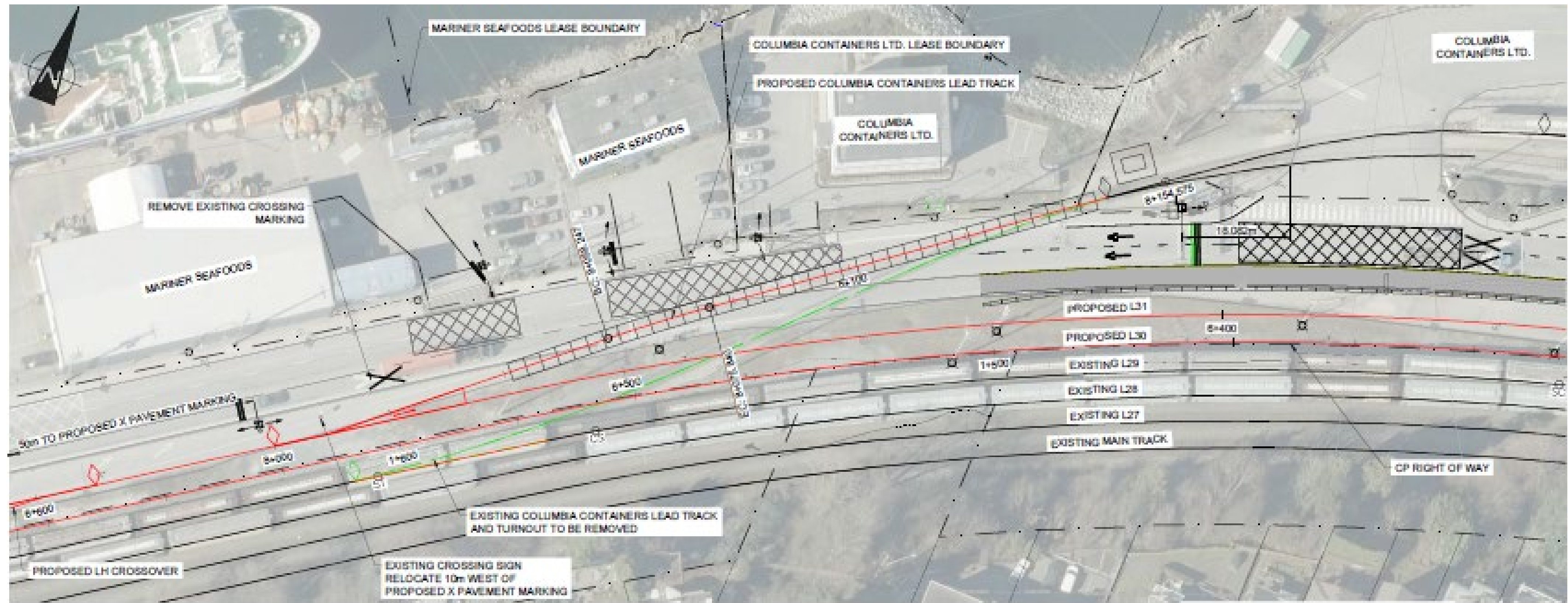
Project Description – Project Location



Project timeline

Project Activity Milestones	Anticipated Timing/Duration
Mobilization, start of construction	April 2022
<i>Stage 1: Removals</i>	<i>8 weeks</i>
<i>Stage 2 & 9: Grading, Drainage and Wall Installation</i>	<i>17 weeks</i>
<i>Stage 3-6 & 8-9: Track Installation</i>	<i>14 weeks</i>
<i>Stage 7: Utility Works at Columbia Containers</i>	<i>3 weeks</i>
New Viterra tracks & CCL crossing in service	August 2022
End of construction & new CP tracks in service	October 2022
New service/lead track in service	January 2023

Execution Plan



- Work progress: East – West – Center
- Work hours: Monday – Saturday, 7am – 8pm
 - Extended work hours may be required to meet key Project timelines and minimize disruptions

PER Status

Item	Timeline
Ongoing engagement with interested Indigenous communities	Ongoing
Draft application submission	August 27, 2021
PER completeness review	September 10, 2021
Final application submission	September 28, 2021
East Vancouver Port Lands and Liaison Committee presentation	October 6, 2021
Public engagement period	Fall 2021

Completed Studies



- Archaeological Overview Assessment
- Environmental Constraints Analysis
- Initial Soil Quality Assessment
- Geotechnical Assessment – L30 Track
- Noise and Vibration Study

Potential Project Effects and Mitigation Strategy



No direct effects are anticipated to:

- Fish and fish habitat
- Groundwater
- Aquatic and terrestrial resources
- Species at risk or of Special Concern
- Marine operations, marine user groups or navigation
- Use of lands and resources by Indigenous peoples
- Views

Potential Project Effects and Mitigation Strategy



Temporary potential effects are anticipated to:

- Air quality
- Archaeology and cultural resources
- Geotechnical
- Noise, vibration, and light
- Surface water and soils
- Traffic

Air Quality

Potential temporary negative effects to local air quality from construction machinery/equipment during construction activities

- **Mitigation:** Construction Environmental Management Plan outlines Best Management Practices employed to mitigate adverse effects, including complying with federal locomotive emission regulations, low-sulphur fuels, proper inspection and maintenance of construction equipment, etc.
- The Project is expected to result in insignificant changes in noise levels at all adjacent residences located south of the project once operational.
- No significant residual adverse effects after mitigation

Archaeology and cultural resources

Potential effects of ground disturbance activities during construction on archaeological resource potential

- **Study objectives:** Archaeological assessment to identify areas of archaeological potential and to plan for and guide any recommended investigations
- **Mitigation:** Chance-Find Procedure – stop work and notify interested Indigenous communities in the event of unexpected discovery of archaeological resources
- No significant residual adverse effects after mitigation

Geotechnical

Potential risks to structures and other hazards

- **Study objectives:** Geotechnical assessment conducted to explore site foundation and track bed, as well as potential impacts to and protection of sewers and other structures
- **Mitigation:** Design and installation of proposed project components to be informed by geotechnical investigations and in compliance with applicable engineering standards to prevent risks to structures and other hazards
- No significant residual adverse effects after mitigation

Noise, vibration and light

Potential temporary increases in noise levels and temporary negative effects of lighting generated during construction activities experienced by residents of the adjacent community

- **Study objectives:** Noise and vibration modelling considered changes in noise and vibration levels based on estimated track operations and calibrated based on available noise and vibration measurement data
- **Mitigation:** Appropriately scheduling timing of noisy construction activities, shrouding of stationary equipment and regular inspection/maintenance of construction equipment; and strategic positioning of lights to face away from residents
- Once operational, the Project will reduce shunting activity in the yard and is expected to result in insignificant changes in noise levels at all adjacent residences
- No significant residual adverse effects after mitigation

Surface water and soils

Potential effects of construction activities on water quality of downstream receiving waterbodies and of contaminated soils requiring excavation

- **Study objectives:** Soil characterization work to determine soil quality and recommended soil management (handling/disposal) approach
- **Mitigation:** Construction Environmental Management Plan and Soil Characterization study include Best Management Practices for surface water and soil management, including erosion and sediment control measures implemented during construction, and appropriate stockpiling, handling and disposal procedures
- No significant residual adverse effects after mitigation

Traffic

Potential temporary negative effects (e.g., reduced speed zones, detours, lane closures) to commercial traffic/operations using Commissioner Street

- **Mitigation:** Traffic control performed per contractor's traffic management plan, and where necessary, construction to occur outside of VFPA's Regular Work Hours
- No impacts are anticipated to traffic during operation since the project is not increasing throughput of any facilities
- No significant residual adverse effects after mitigation

Engagement



- Indigenous groups, specifically Musqueam, Squamish and Tsleil-Waututh Nations
- Stakeholders
- Public
- East Vancouver Port Lands Committee

Discussion and next steps

Company Contact

Mike LoVecchio

Mike_LoVecchio@cpr.ca

