


# Saam Towage Canada Marine Operations Facility



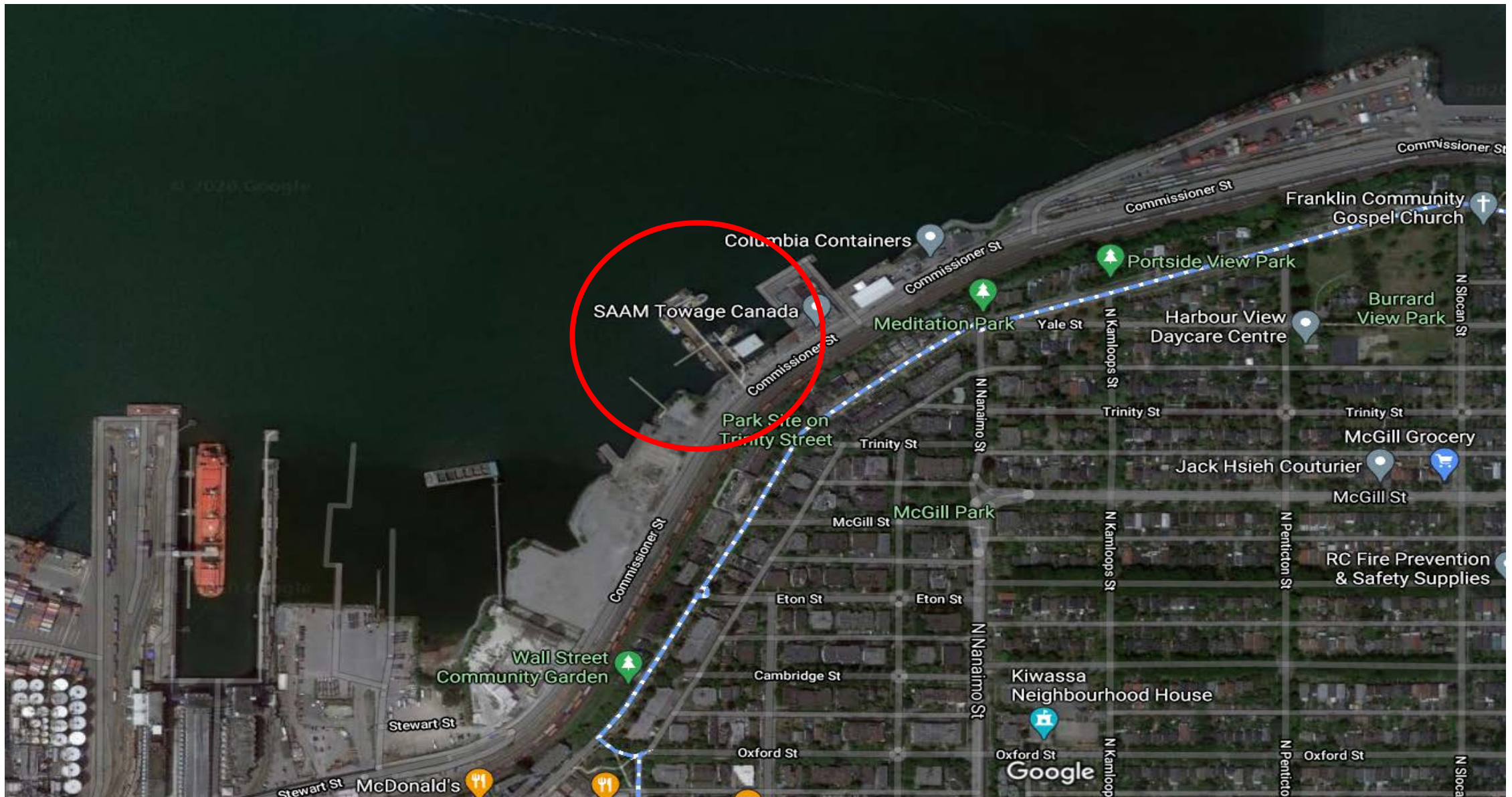
**EVPL Presentation  
November 6, 2020**





- 1 Stewart
- 2 Prince Rupert
- 3 Kitimat
- 4 Port Mellon
- 5 Squamish
- 6 Vancouver
- 7 New Westminster (Fraser River)
-  Vancouver Office

# Vancouver Marine Location

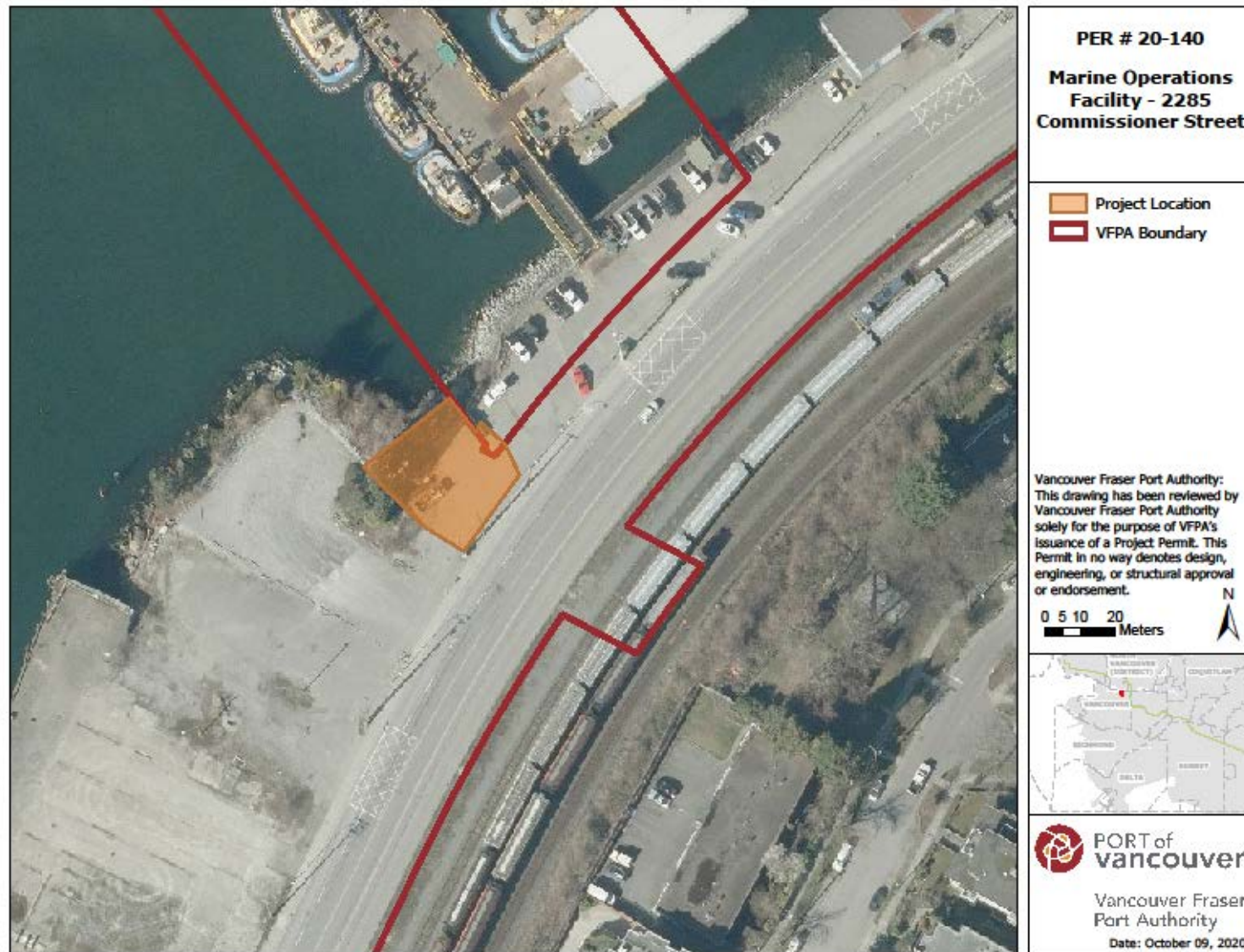


# Marine Operations



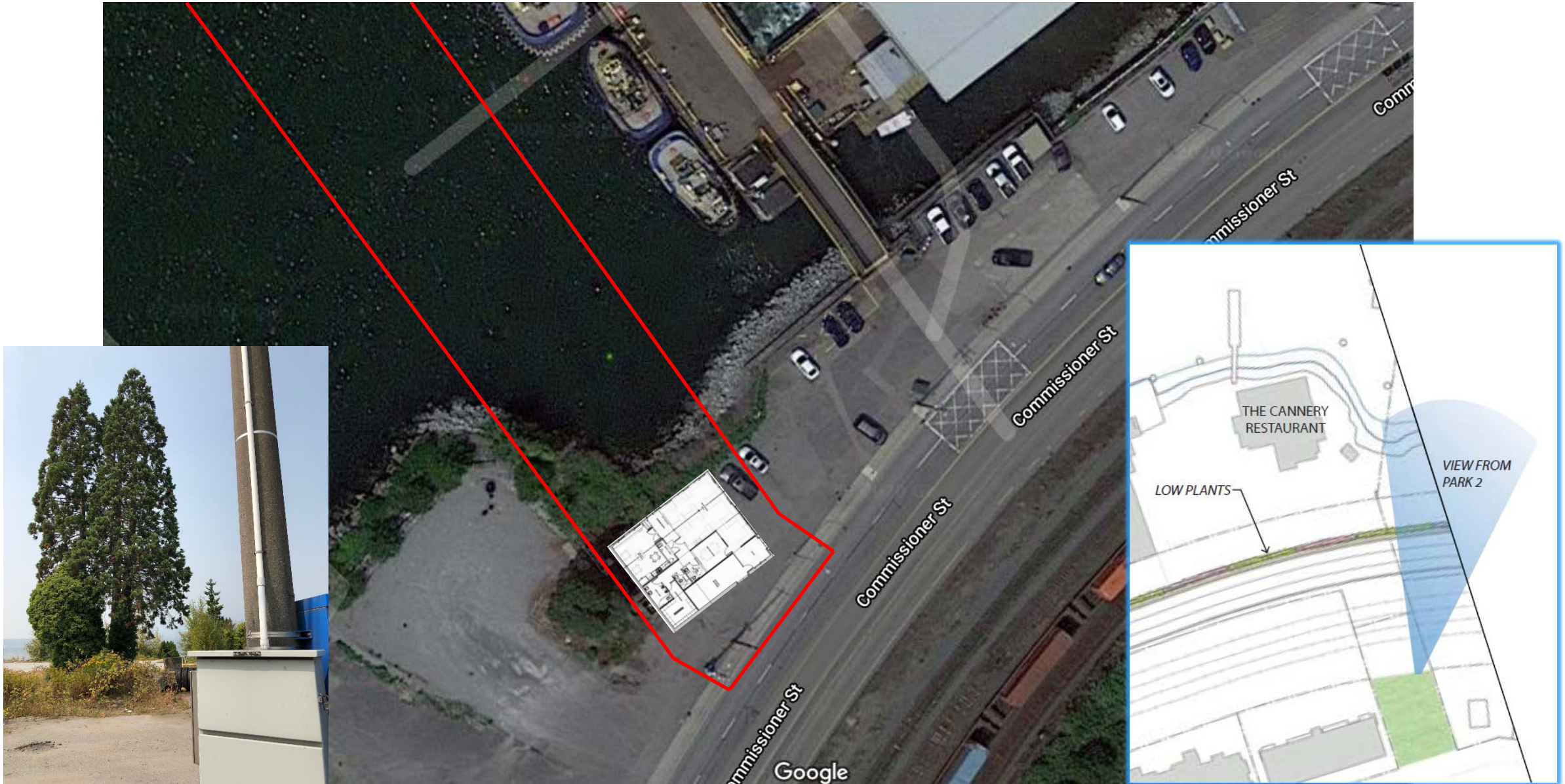


# VFPA Lease Boundaries

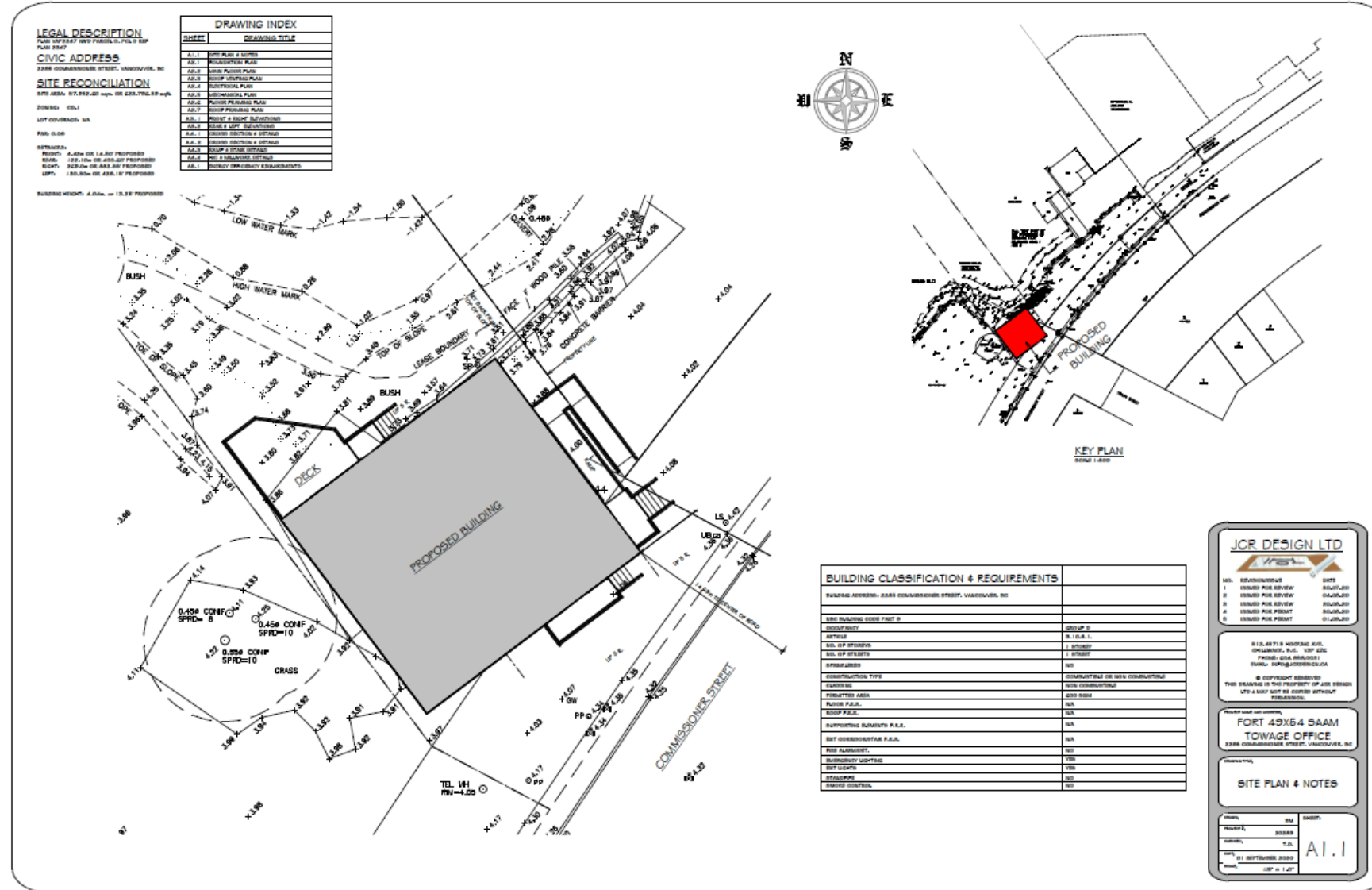




# Project Lease Lot

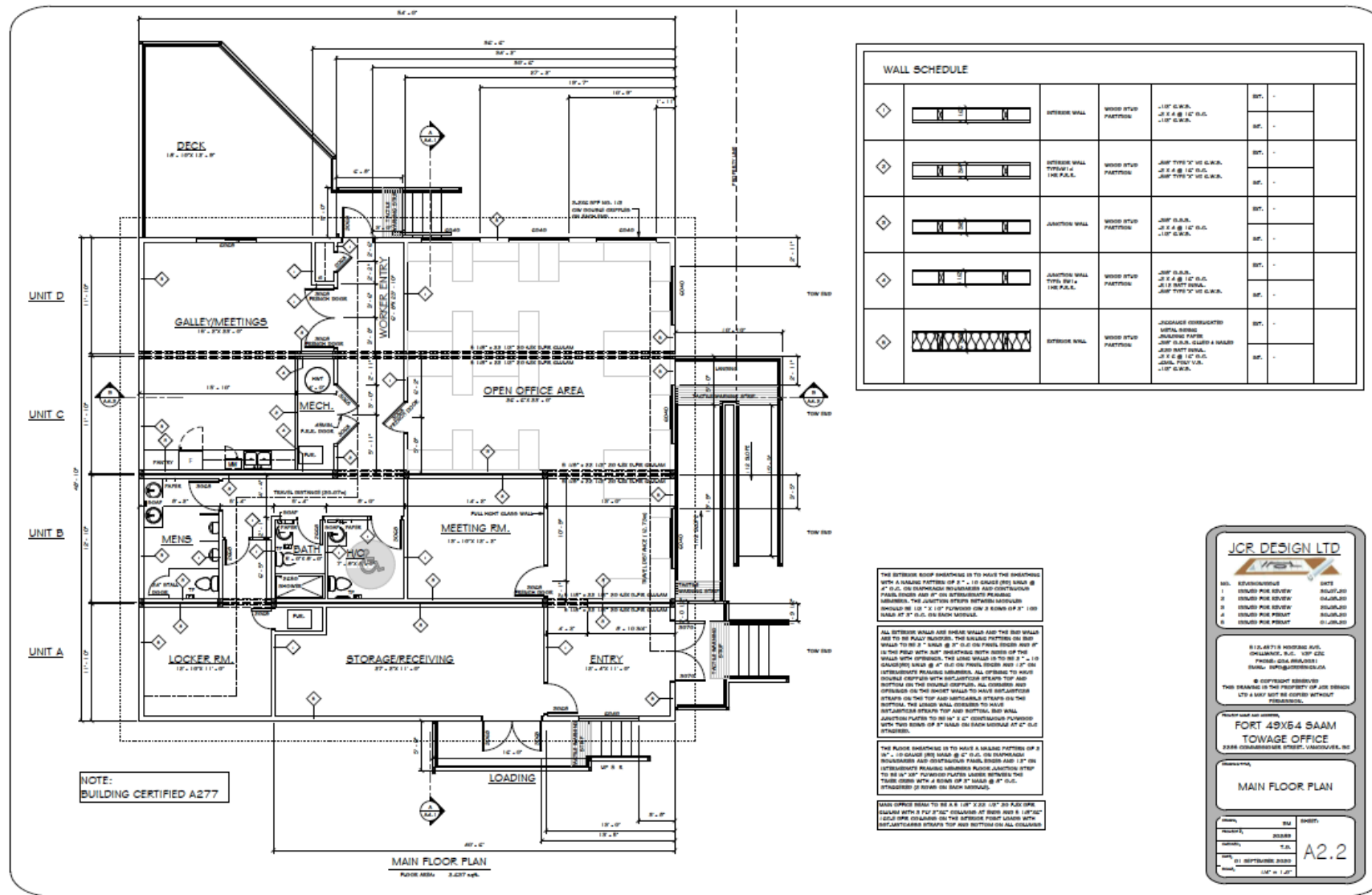


# Site Plan



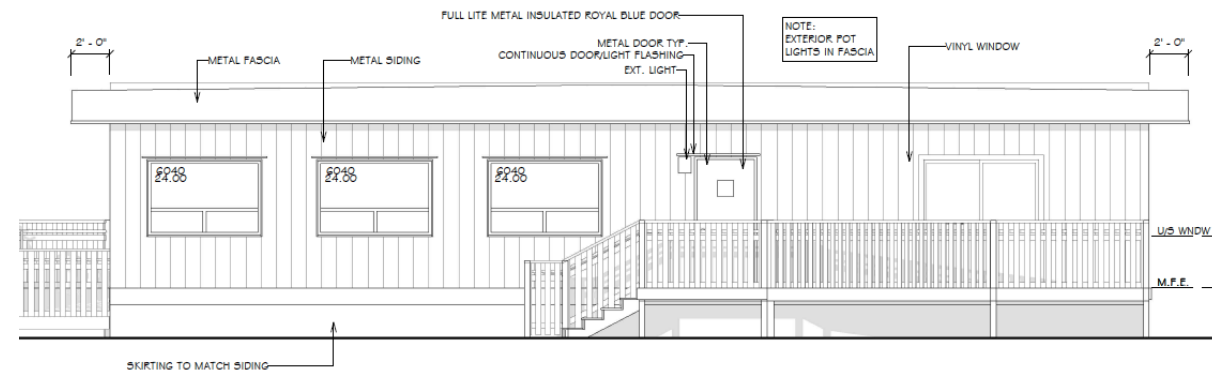
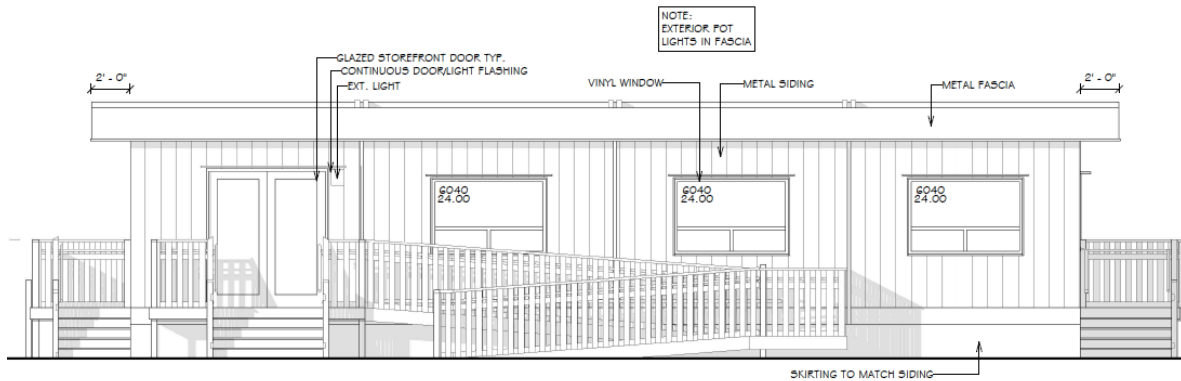
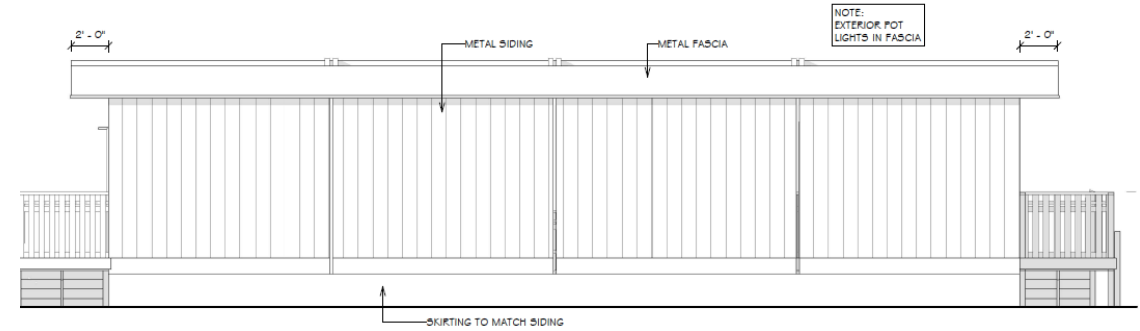
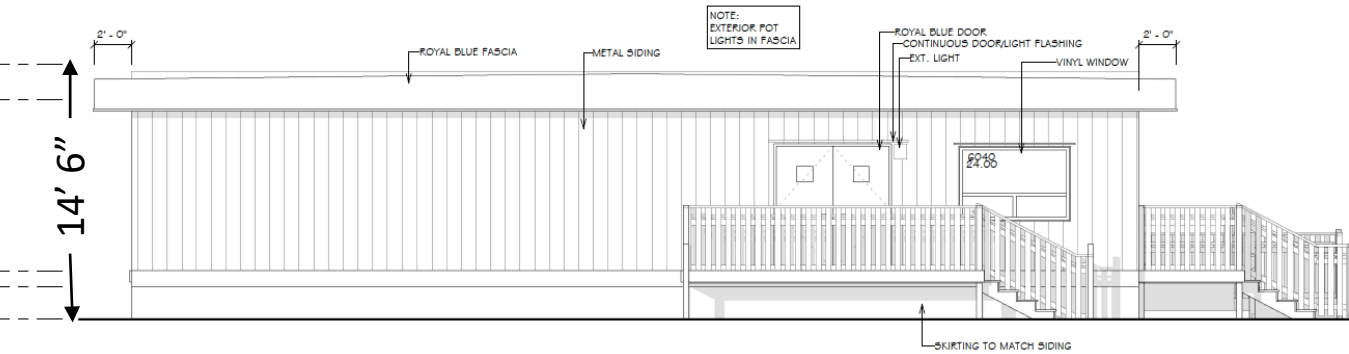
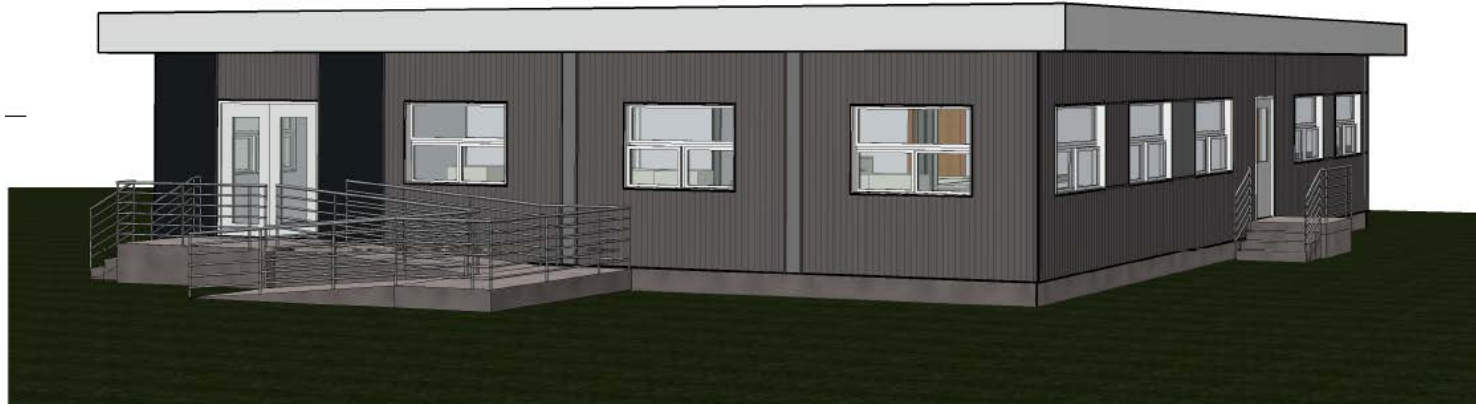


# Floor Plan





# Building Elevations



# Construction Methodology

## Schedule

- Ground Works 2 – 3 weeks
- Building 12 – 14 weeks

## Modular Construction

- Clearing and Pad Prep
- Install 4 Modules
- Complete Improvements

## Neighbourhood Impacts

- Minimal Construction Noise, Dust, or Lighting.
- Standard Working Hours





# Questions

Saam Towage Canada  
604-202-3220  
Mark Bingham

