

March 25, 2020

To TLS participants:

RE: Delivery of hand washing basin and washroom portable units & additional resources

We are writing to follow up on our update from yesterday, March 24, 2020.

The first three of eight portables, for a total of 32 hand washing basins and toilet facilities, have been delivered today. These portables will be located at the following locations (see photos):

- 3 units on the south shore (scheduled delivery: by end of day today);
- 2 units at Fraser Surrey Docks (scheduled delivery: by end of day today); and
- 3 units inbound to Deltaport (scheduled delivery: tomorrow, noon).

These portable units will be **open for use during truck gate operating hours** at their respective terminals, and when those truck gates are closed, the units will be locked for security reasons.

Your safety and health are of great importance to the Vancouver Fraser Port Authority. To promote a clean environment, the port authority has arranged for daily cleaning and sanitization of the portables. While the port authority has arranged for these scheduled services, we ask that all users respect the facilities and the supplies provided so that the drayage community can benefit from their availability. Your support to ensure a clean and suitable environment is appreciated.

We also would remind all users of the portable units to **diligently practice social distancing** as directed by the provincial and federal Health Authorities, and to remain a minimum of 2 metres (or 6.5 feet) away from people at all times.

Further to the cleaning and sanitization services, the port authority will have a security guard posted at each location for additional security and oversight during the operating hours to ensure social distancing is practiced.

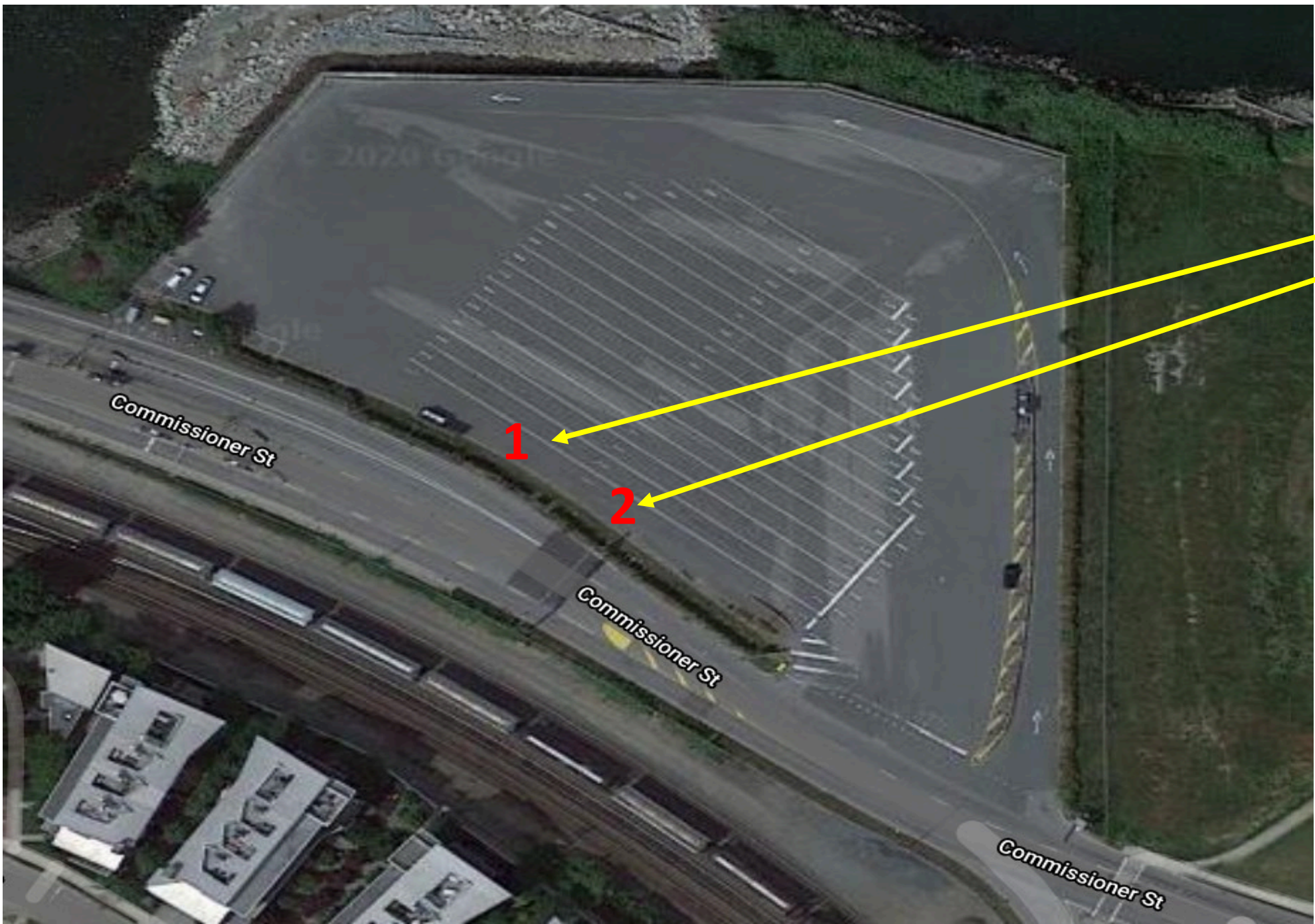
Finally, we have also received other helpful and informative posters created by the federal Health Authority that we would like to share with you today for your teams to act as visual and useful reminders to all during these unprecedented times.

Please distribute this notice and the attachments to your employees, drivers and independent operators.

Stay safe and healthy.

Sincerely,

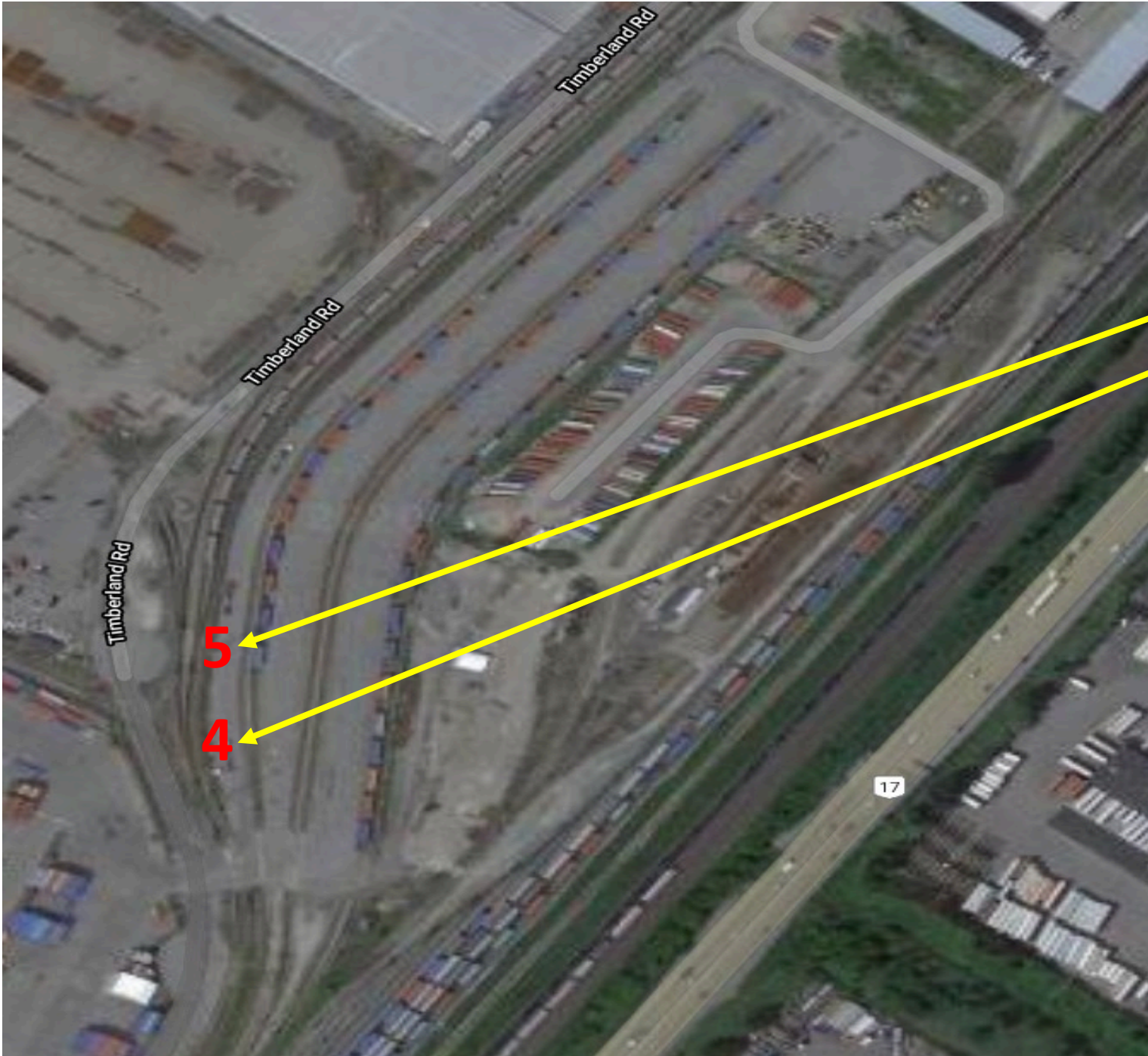
THE TLS ADMINISTRATION TEAM



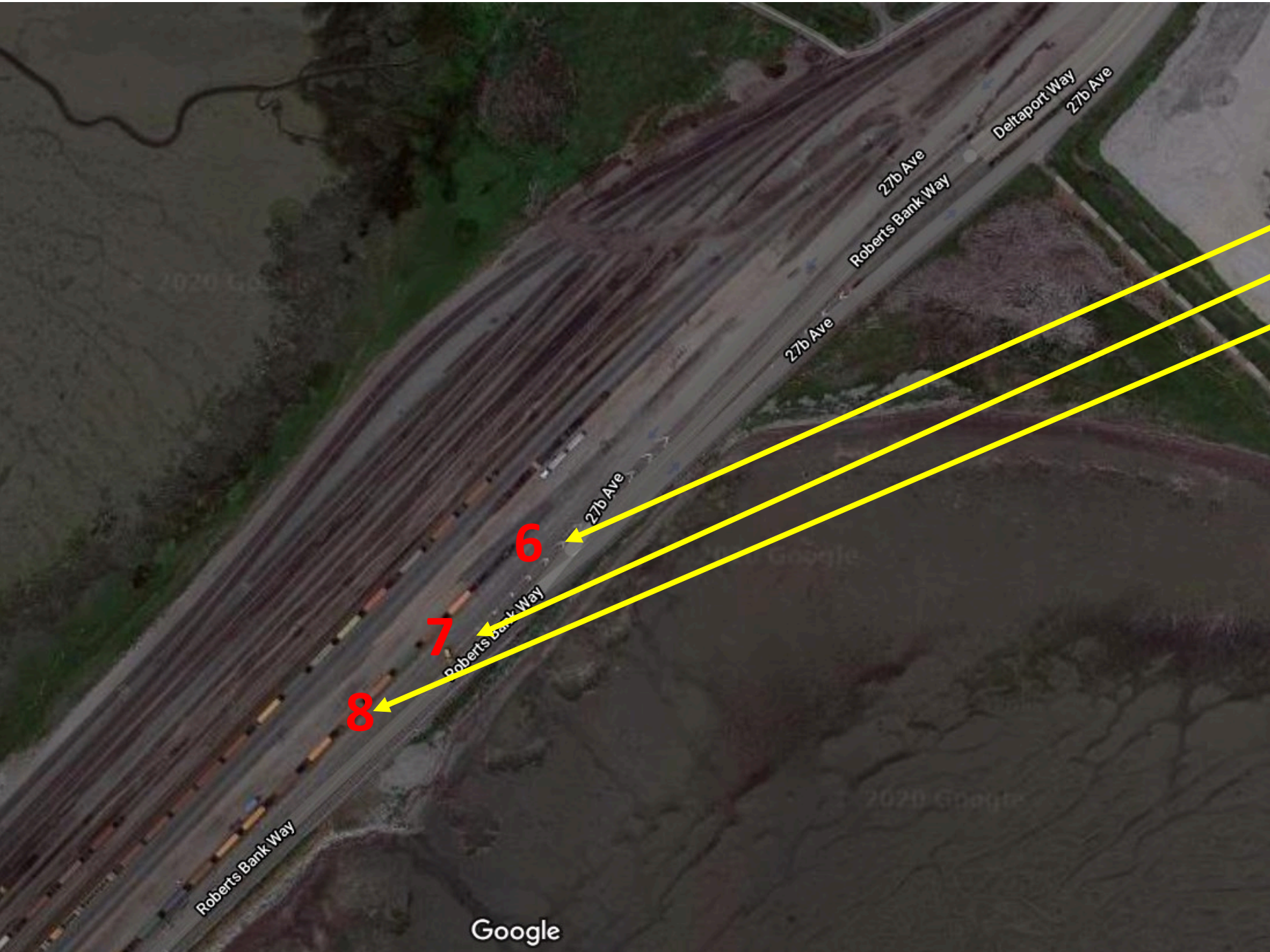
Truck Staging Lot
South Side Between
Fence Line and
Lane 1



North Lane of Commissioner Street – Truck Staging Lane



Fraser Surrey Dock
Inside Intermodal Yard
Adjacent To Timberland Rd
At North Fence Line



Right Side of Roberts Bank Way
Between On Shoulder
Between Painted Median
And Lane (at grade) From
Underneath Overpass