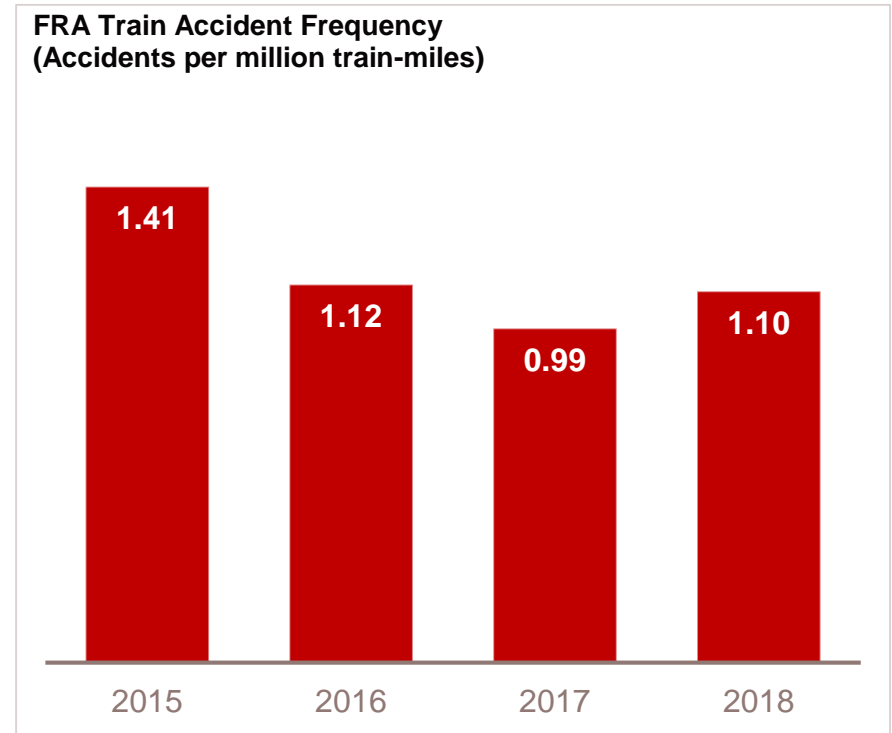
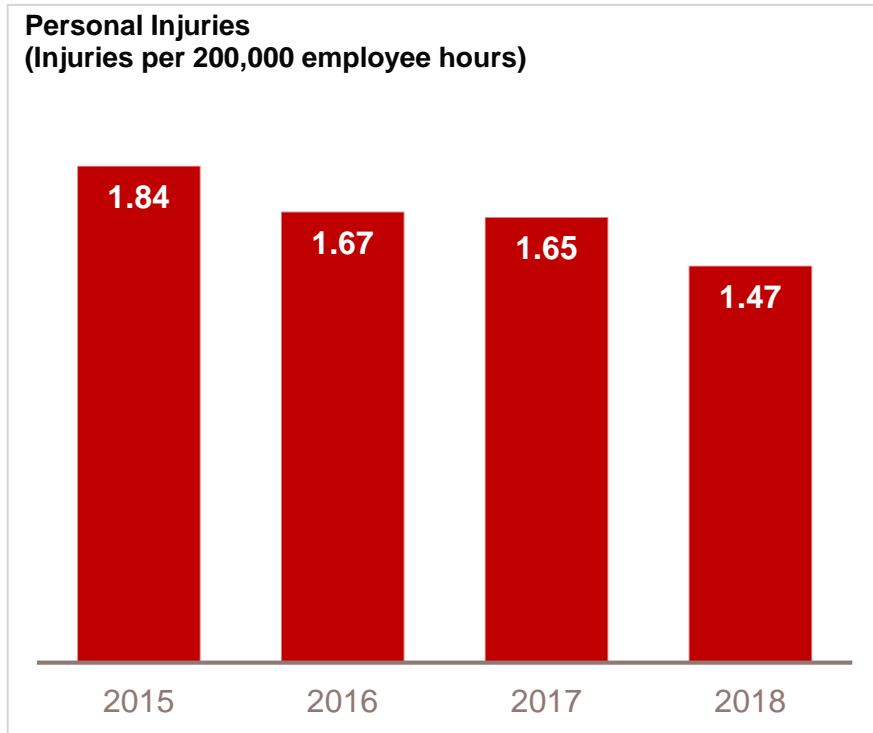




**CP K YARD
RECONFIGURATION
EAST VANCOUVER PORT LANDS COMMITTEE
JANUARY 2020**



INDUSTRY LEADING SAFETY PERFORMANCE



CP is the North American leader in safety performance for the past 13 years

GRAIN



- Canadian Grain 68%
 Regulated 47%
 Non-regulated 21%
- U.S. Grain 32%
 Domestic 22%
 Export 10%



DEDICATED TO ENHANCING THE GRAIN SUPPLY CHAIN

- CP's largest line of business
- Unique grain portfolio - diverse commodities and large origination networks in both Canada and U.S.
- Industry-leading service keeps grain flowing to CP served elevators
- Partnerships with grain companies attract elevator investments to CP's network
- CP is working with industry partners to increase throughput and drive efficiencies across the entire grain supply chain

SUPPLY CHAIN CHANGES

GRAIN EXPORTS ARE GROWING



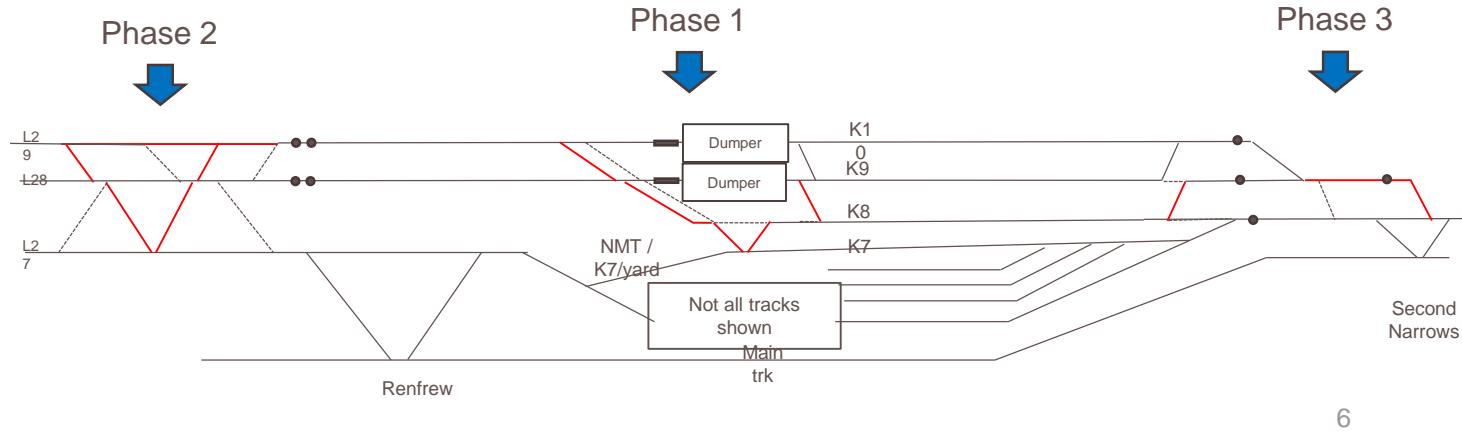
- The grain supply chain is moving to an 8,500 foot train model from a 7,000 foot train model.
- CP and our supply chain partners all must invest in our respective facilities as a result.

THE FUTURE OF THE GRAIN SUPPLY CHAIN



K YARD CHANGES UNDERWAY

CONSTRUCTION UNDERWAY



6

Not to scale

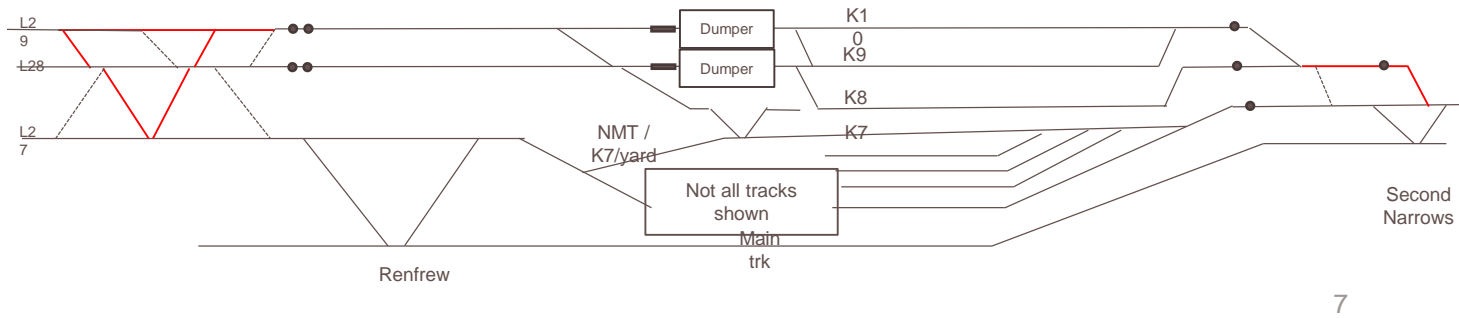
- Remove
- New
- New Indexer
- Derail

Nov 2019

PHASE 1 COMPLETE

JULY 2019

Current – Phase 1 section completed in July 2019



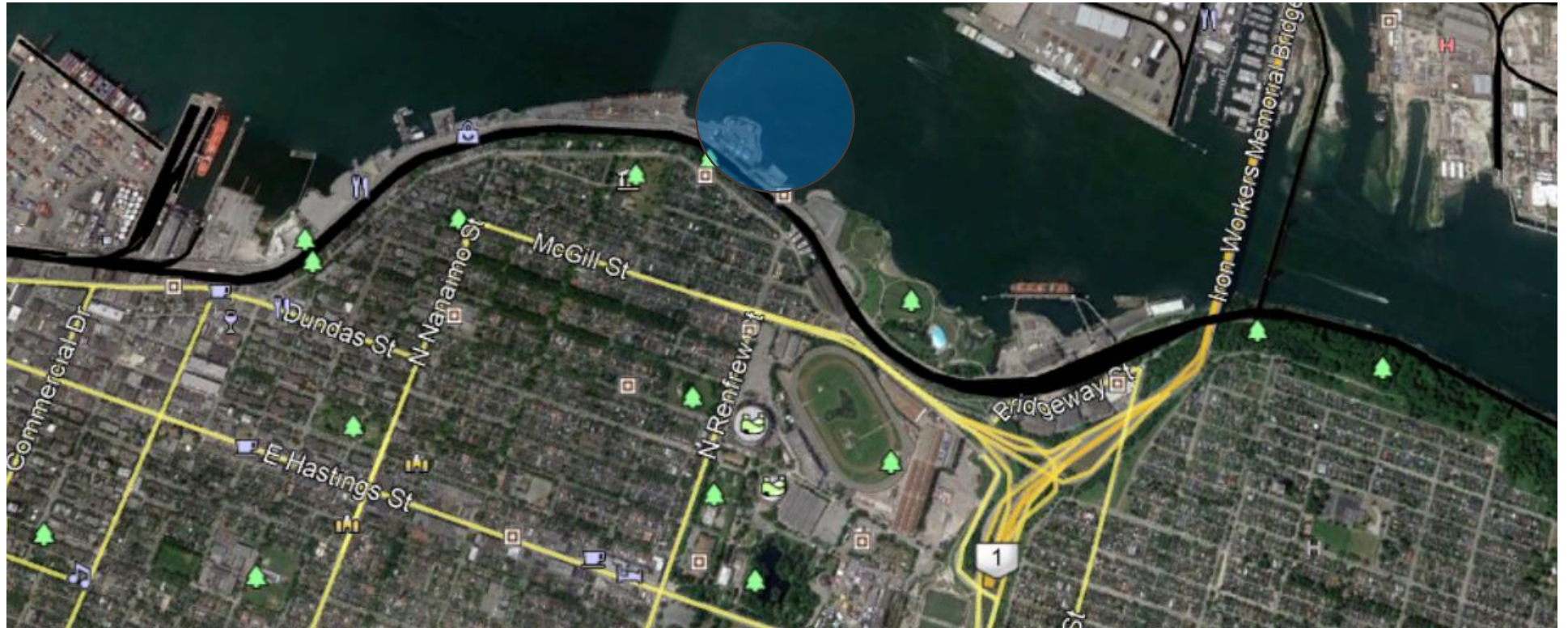
Not to scale

- Remove
- New
- New Indexer
- Derail

Nov 2019

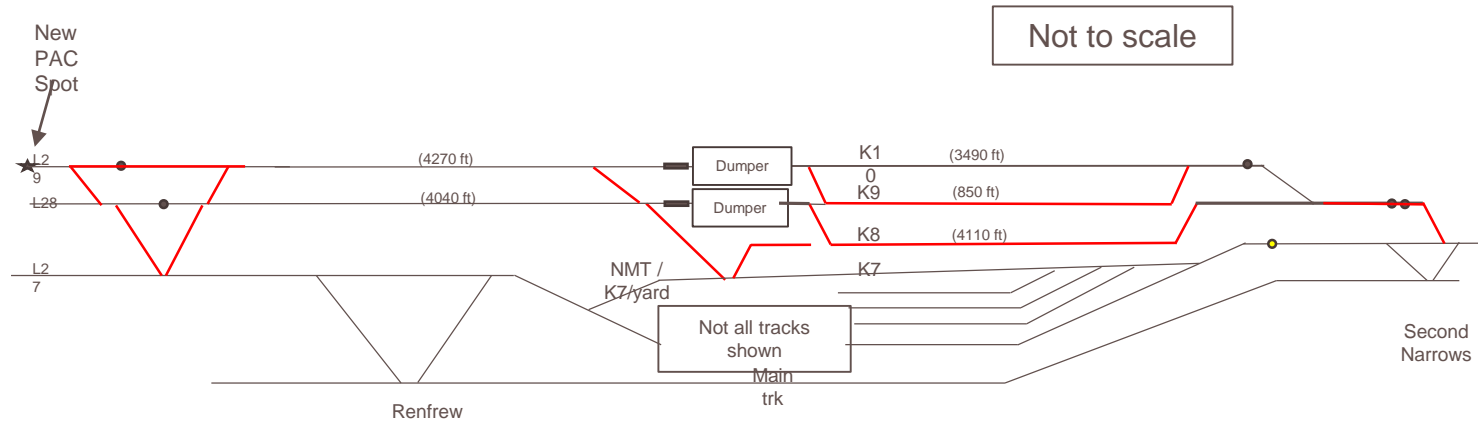
PHASE 2 – CONSTRUCTION AREA

EARLY MARCH 2020



COMPLETED PROJECT

PHASE 3 MAY 2020



9

— Relocated, New or Repurposed

May 1 2019

CONNECT

Mike LoVecchio

**Director Indigenous Relations
and Government Affairs**

778 772-9636

mike_lovecchio@cpr.ca

Public information:

CP Community Connect (24/7)

800 766-7912

community_connect@cpr.ca

www.cpr.ca

@CanadianPacific

Emergencies:

CP Police Service (24/7)

800 716-9132