



This notice contains important information.
Please have it translated.

ਇਸ ਨੋਟਿਸ ਵਿਚ ਜ਼ਰੂਰੀ ਜਾਣਕਾਰੀ ਹੈ।
ਕਿਰਪਾ ਕਰਕੇ ਕਿਸੇ ਤੋਂ ਇਸ ਦਾ ਅਨੁਵਾਦ ਕਰਵਾਉ।

這通告的資料非常重要，請把它翻譯出來。

Le présent avis contient des renseignements
importants. Veuillez les faire traduire.

Ang paunawa na ito ay naglalaman ng
mahalagang impormasyon. Mangyari lamang
na ipasalin sa iyong wika.

这份通知含有重要信息，请找人帮您翻译。

May 20, 2022

Re: Geotechnical and environmental field investigations – Portside Blundell Road Improvements Project

The Vancouver Fraser Port Authority is writing to notify you that we are undertaking geotechnical and environmental field investigations to better understand the ground conditions for the Portside Blundell Road Improvements Project.

Timing

- May 26 to June 17, 2022
- Work hours: Monday through Friday, 7:00 a.m. to 8:00 p.m.

Traffic changes

- Short periods of single lane alternating traffic and short-term temporary lane reductions and pedestrian pathway closures while we are using a vacuum truck to locate utilities on Blundell Road and No.8 Road
- We do not expect any changes to traffic patterns during the borehole drilling unless the location of utilities requires us to change the planned borehole locations

What to expect

The work includes drilling holes in various locations on Portside Road, Blundell Road, Adesa, and Area V as shown in Figure 1. We expect to drill approximately 30 holes to a depth between nine and 50 metres.

During this period, you may experience a minor and temporary increase in noise and dust levels consistent with these types of activities. When required, traffic control personnel will be on site to help direct traffic.

Thank you

We appreciate your patience and understanding as we undertake this important work. When complete, the project will increase the efficiency and capacity of the transportation corridor.

To stay up-to-date on the project, you can sign up for the project newsletter at:

portvancouver.com/portsideblundellupgrades

If you have any questions, please contact gateway@portvancouver.com or 604.665.9004. We will respond in a timely manner to questions and concerns.

Vancouver Fraser Port Authority
Portside Blundell Road Improvements Project

Sincerely,

R.S.

Roxana Mousavi

Acting manager, infrastructure delivery

Vancouver Fraser Port Authority

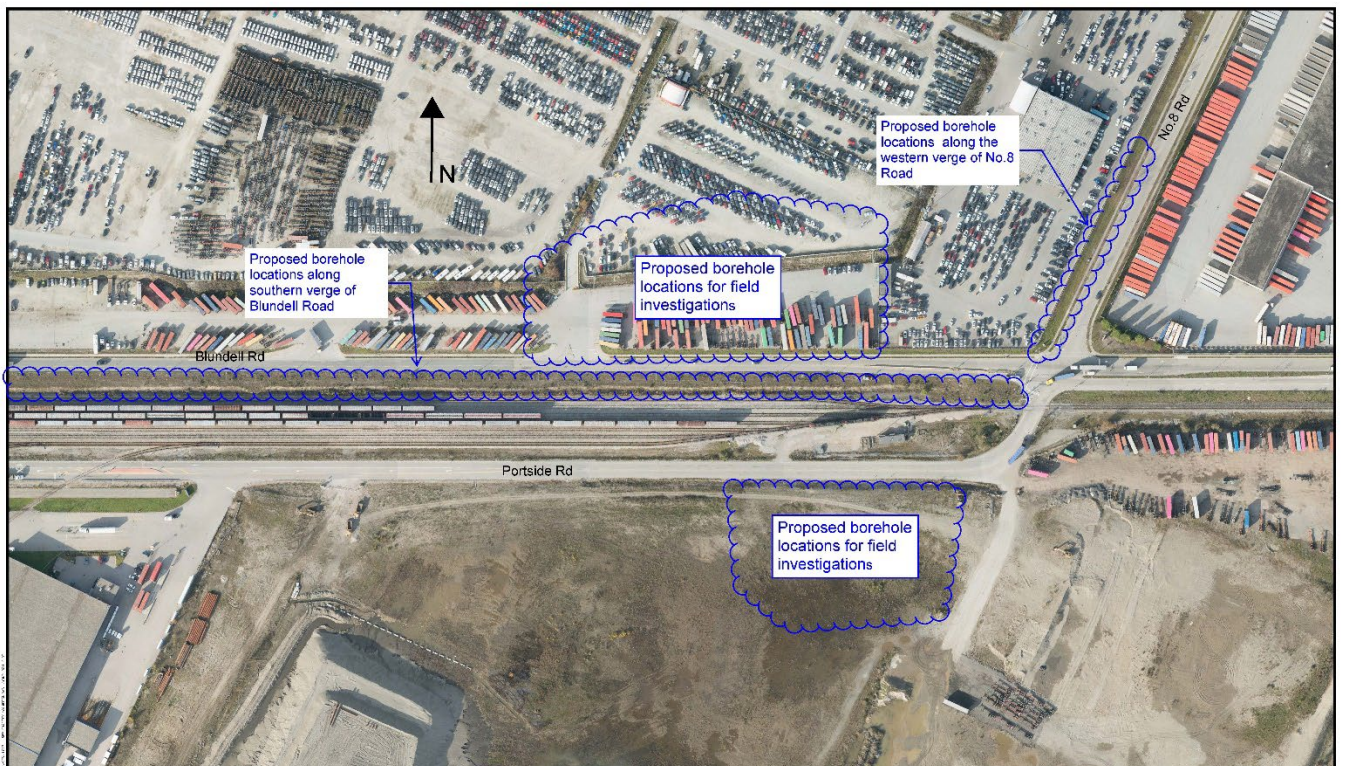


Figure 1: Proposed drilling locations

About the Portside Blundell Road Improvements Project

The Vancouver Fraser Port Authority is upgrading roadways in the Fraser Richmond Industrial Lands. This location and its connections to major transportation routes and facilities make it an active industrial area for warehouse and transload businesses that pack and unpack shipping containers moving to and from the Port of Vancouver. This corridor has some of the most concentrated activity in the Greater Vancouver area for moving goods from marine terminals to rail lines and trucks, and then off to other destinations.

The project includes:

- A new overpass over the CN rail line, connecting Blundell Road and Portside Road
- Widening Blundell Road from two lanes to four lanes, between the No. 8 Road intersection and just west of York Road
- A new bridge and extension of Portside Road over the No. 7 Road and No. 7 Canal
- A new multi-use pathway along the north side of Blundell Road and south side of Portside Road