

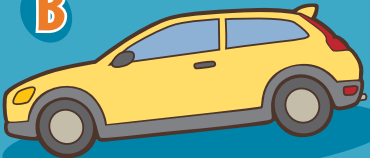
Spot the matching pair!

Did you know that cars made in Asia and brought to Canada come through the Port of Vancouver? Here are a few new cars that just arrived on a RoRo. Can you spot which two are identical?

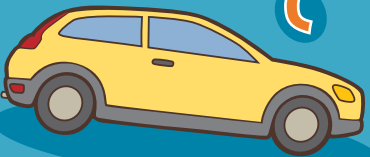
A



B



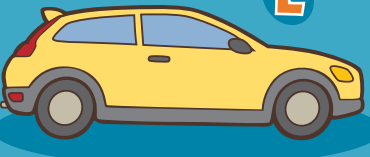
C



D



E



Answer: B and E are the matching pair.

A: To the...

Put-in-order! These pictures show how an orange gets from the farm, where it's grown, all the way to your grocery store, but they're all mixed up! Can you put them in the correct order by numbering them from 1 to 6?



Answer: (Left to right, top to bottom) 1, 5, 3, 6, 2, 4.

Find out the answer to the riddle below by crossing out all the letters that spell "ship" and "train" and then unscrambling the left over letters.

Q: Where does a ship go when it's sick?

C S R N A
k H i N A
d P T
o

Answer: To the dock!