

Le présent message contient des renseignements importants. Si vous avez besoin d'une traduction, veuillez communiquer avec info@transmountain.com.



TRANS MOUNTAIN

Construction Update Notice

WESTRIDGE MARINE TERMINAL: Update on Night Work

We're working in your neighbourhood of Burnaby, BC

March 4, 2021 to September 4, 2021*

As a neighbour of Trans Mountain's Westridge Marine Terminal (WMT), you are receiving this Update Notice to ensure that you are kept informed of construction activity at the Terminal as part of the Trans Mountain Expansion Project. On February 7, 2020 Trans Mountain announced an updated Project Schedule, with a new in-service date of December 2022 (Westridge, Berth 1 and 2).* Please visit www.transmountain.com/Burnaby to access the latest Project information and sign up for automatic updates.

Trans Mountain continues in-water and foreshore construction at WMT including pile driving for marine dock structures and sheet cell pile driving within the turbidity curtain as part of the foreshore extension. Onshore construction activity includes widening of the main access road, soil improvement works in the foreshore area and the relocation of existing marine terminal infrastructure to accommodate the Expansion Project.

EXTENDED WORK HOURS – WMT FORESHORE AREA

In 2020, Trans Mountain received approval from the Vancouver Fraser Port Authority (the port authority) to extend a limited scope of construction activities at the Terminal to 24 hours per day, Monday to Saturday, effective September 8, 2020 for approximately 6 months. Subject to approval by the port authority, Trans Mountain will continue the same activities for an additional 6 months from March 4, 2021 to September 4, 2021.

General construction activities related to the Project currently take place during regular construction hours between 7:00 am and 8:00 pm Monday to Saturday as stipulated under the port authority permit PER # 19-162. Night work **does not** include pile driving operations; those activities will continue to occur only during daytime regular construction hours.

There is constrained daytime site access to WMT due to existing marine terminal operations which need to continue to safely and efficiently deliver oil and jet fuel to British Columbia and other markets.

Challenging ground conditions in the marine terminal foreshore area have increased the complexity and duration of the ground improvement work due to obstructions encountered at various depths in the ground. To meet Project schedule constraints and accommodate the terminal's operations, some essential works need to be completed during a night shift.



All work to be completed on night shift would adhere to the requirements and conditions originally outlined in port authority permit #19-162. This includes abiding by all noise, lighting and environmental requirements in the Project Permit Application as well as the Westridge Marine Terminal Environmental Protection Plan (CER Filing ID A6G2L1) and Noise Management Plan (CER Filing ID A7I3K1).¹² All emergency plans and resources would be maintained through night shift work hours.

The work activities proposed to be conducted at night will include:

- Ground Improvement on the foreshore to improve long term ground stability

PROPOSED NIGHT SHIFT ACTIVITIES

Foreshore Ground Improvement:

Trans Mountain continues to work on extending the land along the water to accommodate new equipment and facilities including:

- Dock pipelines and metering equipment
- Emissions management equipment
- Firewater and foam pumping system
- Storm water management system
- Electrical equipment and control system
- Vessel shore power facilities
- New control building
- Emergency response booms and areas for deployment of emergency response equipment

Construction activities associated with the ground improvement night shift work include:

- Drilling operations inclusive of soil mixing and jet grouting
- Operations to facilitate the supply of grout from on-site batch plant

Trans Mountain and its acoustic consultants have completed an assessment of the potential noise sources related to the night shift construction activity mentioned above and anticipate that noise levels associated with this construction activity will remain within the nighttime Permissible Sound Levels outlined in the Project permit which meet with BC Oil and Gas Commission Guidelines.

¹ Westridge Environmental Protection Plan, Condition 81 [CER Filing ID A6G2L1]: <https://apps.cer-rec.gc.ca/REGDOCS/Item/View/3581455> (Accessed February 9, 2021)

² Westridge Marine Terminal Nightshift Noise Management Plan Addendum to Condition 80 [CER Filing ID A7I3K1]: https://docs2.cer-rec.gc.ca/II-eng/IIisapi.dll/fetch/2000/90464/90552/548311/956726/2392873/3781699/3962306/C08209%2D1_Condition_80_WMT_Night_Shift_Noise_Management_Plan_Addendum_September_8%2C_2020_%2D_A7I3K1.pdf?nodeid=3962307&vernum=-2 (Accessed February 9, 2021)



Trans Mountain is proposing to put in place the following mitigation measures to minimize potential disturbance from night shift construction activities:

- Where possible, limit use of generators and light plants
- Noise barriers to be deployed close to noisy activities to block effects on residential areas, including north shore areas
- Use of directional lighting to limit light pollution to surrounding area (people/birds)
- Minimize vehicle use on site
- Continuous noise monitoring and deployment of noise mitigations as per the noise management plan
- Use of hoard piping with welding tents to eliminate visibility welding activity at night
- Offsite parking with shuttle to minimize vehicle traffic accessing the site

Should you have concerns regarding this work, please contact us at **1.866.514.6700** or info@transmountain.com.

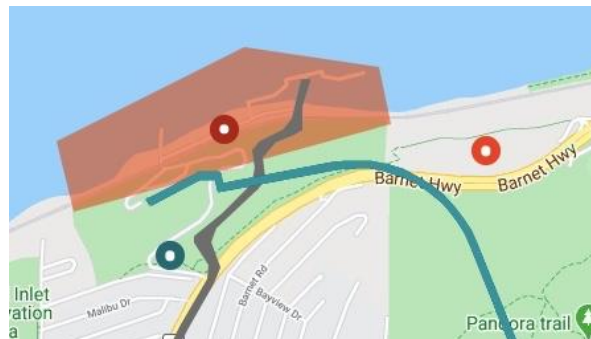
For questions for the port authority's review of these proposed works, please call 604.665.9004 or email Community.Feedback@portvancouver.com.

Visit our Westridge Marine Terminal web page at: www.transmountain.com/westridge-marine-terminal

Trans Mountain's first priority is the health and safety of our workforce, their families and our communities. In response to the evolving COVID-19 pandemic, Trans Mountain and our construction contractors for the Trans Mountain Expansion Project have been working diligently together to ensure adherence to all advice and direction from government and health officials both provincially and federally.

For more information on Trans Mountain's COVID-19 response, please visit transmountain.com/covid19

SITE LOCATION



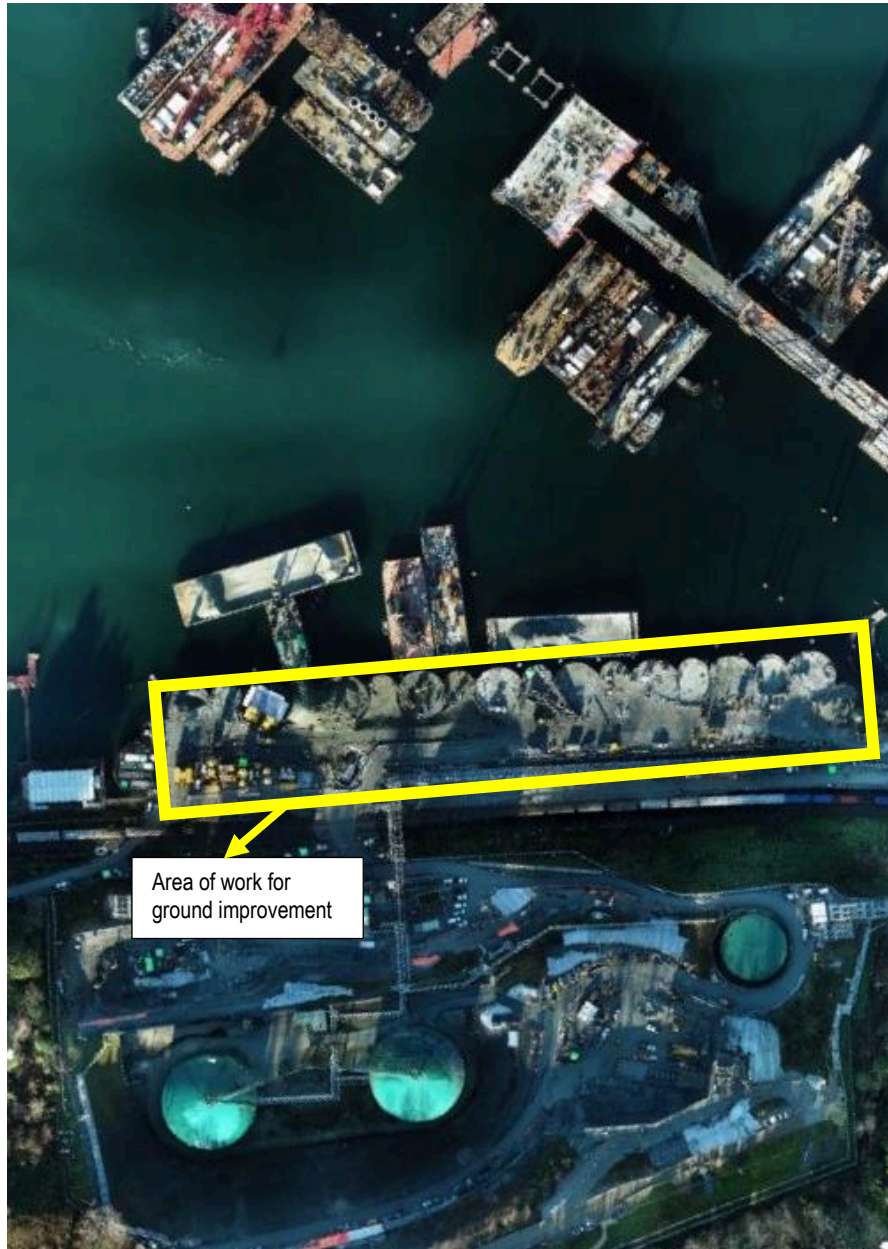


Figure 1: Location of nightwork at WMT Foreshore

CONTACT US:

Trans Mountain

✉ info@transmountain.com

☎ 1.866.514.6700

🌐 transmountain.com



@TransMtn

PO Box 81018

Burnaby, BC V5H 3B0



youtube.com/transmtn

Pipeline or construction emergency?

Call 24/7: 1.888.876.6711