

Learn more about safe boating practices in the Port of Vancouver Port Information Guide at portvancouver.com/safeboating

Key Contacts

24/7 PORT OPERATIONS CENTRE
Phone: 604.665.9086

VICTORIA TRAFFIC
Phone: 250.363.6611 / Cell: *16 / VHF: 12

MARINE EMERGENCIES
Cell: *16 / VHF: 16 / Phone: 911

05/2019

Where do I?

Anchor

Anchorage in Burrard inlet are for deep-sea vessels only unless in an emergency and then only with port authority permission. Recreational anchorages are available in False Creek and Port Moody.



Safe boating practices

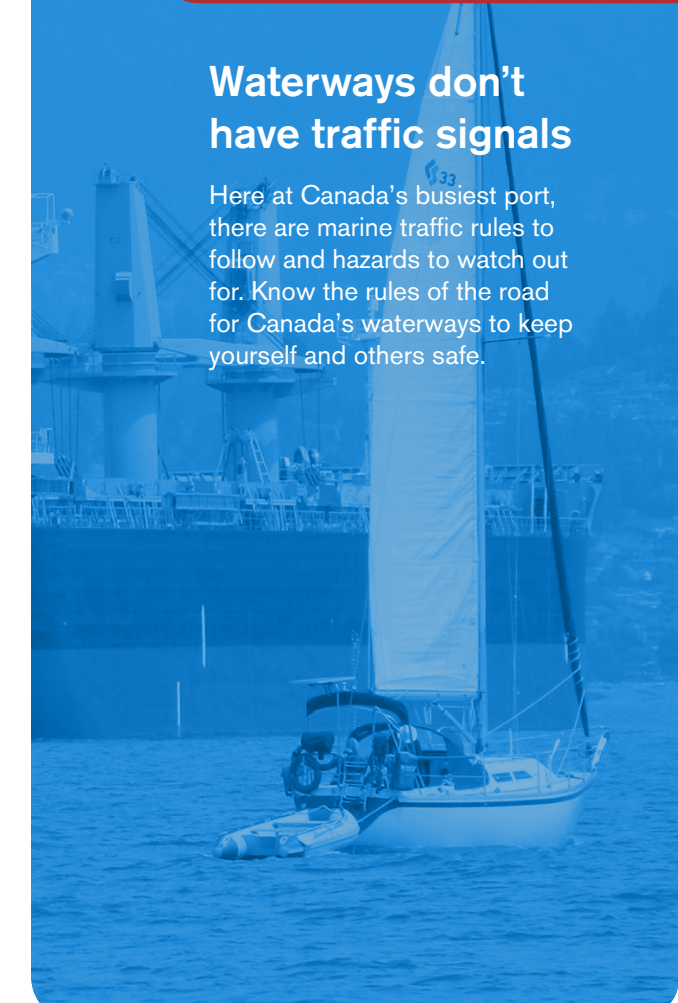
- LOOK** **Watch out for larger vessels.**
Large, deep-sea vessels have limited visibility – don't assume they can see you.
Never cross between a tugboat and its tow.
Tow cables are often submerged and not visible.
- LISTEN** **Listen for aircraft.**
Float planes landing or taking off need plenty of space.
Attend to signals from other vessels.
Five or more short and rapid blasts of a ship's whistle means "danger – stay clear."
Monitor VHF 16 and 12.
- ACT** **Be prepared to move out of the way**
Large, deep-sea vessels can't move quickly, especially in narrow channels. Even if you have the right-of-way, you must yield to them.
Report incidents
Contact our Port Operations Centre at 604.665.9086. In an emergency, call 911.

Safe Boating Guide

Burrard Inlet

Waterways don't have traffic signals

Here at Canada's busiest port, there are marine traffic rules to follow and hazards to watch out for. Know the rules of the road for Canada's waterways to keep yourself and others safe.



Know the rules and ensure you comply

Keep your vessel in safe working order – life jackets, radios and navigation lights are required. It is prohibited to operate a boat while impaired. Harbour patrol officers, together with agency partners, conduct routine vessel inspections. Vessels not in compliance with local rules may be ticketed or removed at the owners' expense. Learn more about safe boating requirements at www.tc.gc.ca/boatingsafety.

Barnett Marine Park

Fishing restrictions

No crabbing or fishing within the deep-sea transit route. Do not impede deep-sea vessels.

Port Moody

Recreational anchorages

Anchor in designated recreational anchorage area. Contact the City of Port Moody for more information or visit portmoody.ca/harbour.

VANCOUVER FRASER PORT AUTHORITY

100 The Pointe, 999 Canada Place
Vancouver, B.C. Canada V6C 3T4
T: 604.665.9000
F: 1.866.284.4271
E: info@portvancouver.com
W: portvancouver.com

Safe boating within Burrard Inlet

Not for navigational purposes. Always follow safe boating practices.

First Narrows

Narrow channel, strong currents

Be extremely cautious when transiting through the narrows. Stay to the right of the channel.

Fishing restrictions

No crabbing or fishing within the narrows. Do not impede the deep-sea transit route.

Speed Restriction Area

15 knots through water.

Coal Harbour

5 knot speed limit

Transit slowly and predictably. No wake when passing moored seaplanes.

Float plane landing area

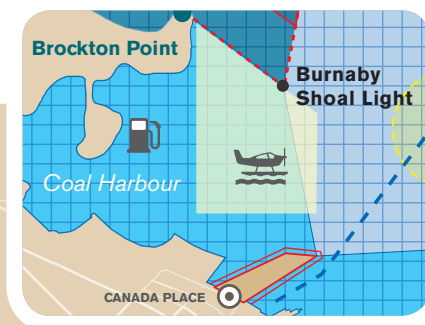
Keep clear of aircraft operations zone. Watch the horizon for landing aircraft and keep clear of anticipated landing area.

Cruise terminal security zone

Keep clear of Canada Place, at least 50 meters.

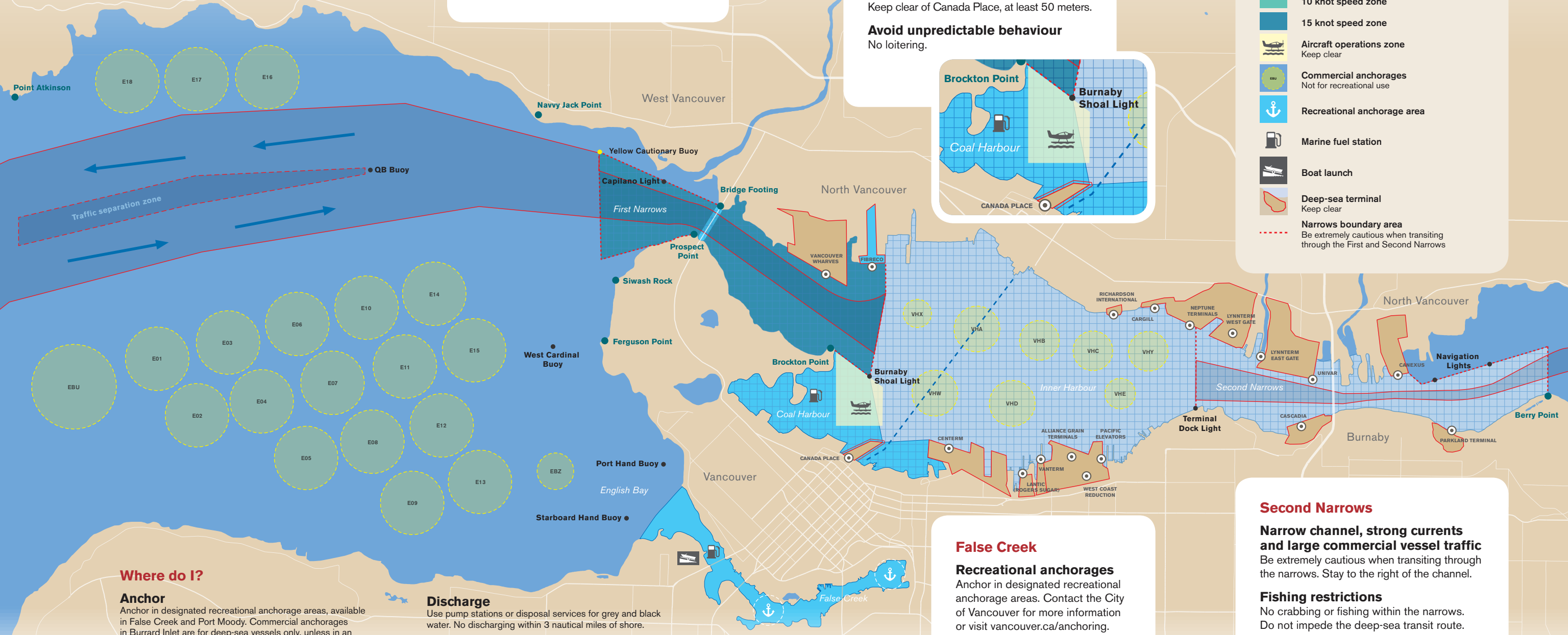
Avoid unpredictable behaviour

No loitering.



LEGEND

- Busy port area**
No anchoring, crabbing, fishing, sailing, rowing, paddling, jet skiing or waterskiing
- Seabus ferry route**
- Canada Place Security zone**
Keep clear, at least 50 metres
- Deep-sea transit route**
Stay to the right of the channel, do not cross channel in front of deep sea vessels
- 5 knot speed zone**
- 10 knot speed zone**
- 15 knot speed zone**
- Aircraft operations zone**
Keep clear
- Commercial anchorages**
Not for recreational use
- Recreational anchorage area**
- Marine fuel station**
- Boat launch**
- Deep-sea terminal**
Keep clear
- Narrows boundary area**
Be extremely cautious when transiting through the First and Second Narrows



Where do I?

Anchor

Anchor in designated recreational anchorage areas, available in False Creek and Port Moody. Commercial anchorages in Burrard Inlet are for deep-sea vessels only, unless in an emergency and then only with port authority permission.

Discharge

Use pump stations or disposal services for grey and black water. No discharging within 3 nautical miles of shore.

False Creek

Recreational anchorages

Anchor in designated recreational anchorage areas. Contact the City of Vancouver for more information or visit vancouver.ca/anchoring.

Second Narrows

Narrow channel, strong currents and large commercial vessel traffic

Be extremely cautious when transiting through the narrows. Stay to the right of the channel.

Fishing restrictions

No crabbing or fishing within the narrows. Do not impede the deep-sea transit route.