



Centerm Expansion Project

TABLE OF CONTENTS

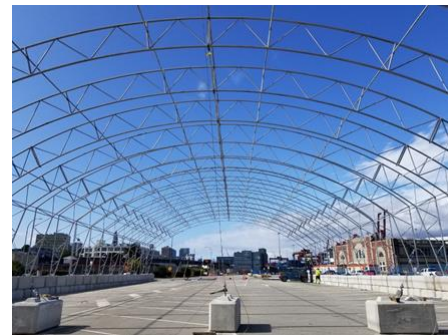
- [October 2019](#)
- [What to expect this month](#)
- [What to expect during mooring dolphin demolition](#)
- [Ballantyne pier heritage preservation](#)
- [New modular office space](#)
- [Centerm Community Fund now taking applications](#)
- [About the projects](#)
- [Contact us](#)

October 2019

You are receiving this email because you signed up to receive updates about the Centerm Expansion Project and South Shore Access Project.

What to expect this month

Work continues in the water around the terminal and preparatory work begins on land this month.



Dredging and infilling is ongoing. You will be able to see three barges working on the east and west sides of Centerm. Dredging and infilling will take place up to 24 hours a day, 7 days a week in order to keep the project on track.

Pictured: Temporary equipment shed currently being assembled to house all the equipment that will be moved out of the current sheds at Ballantyne pier.

Starting this month, we will also be doing demolition work on and off terminal.

- **Demolition of mooring dolphin:** In early October, we will also remove the mooring dolphin located at the west side of the Centerm terminal. A mooring dolphin is a structure used to tie ships to the terminal with ropes. This demolition will take place during daytime hours and we expect it will be done by the end of October. Read more below.
- **Demolition of Ballantyne Pier, adjacent building and sheds:** We will begin to demolish two of the buildings on top of Ballantyne Pier, as well as the old dock around the edges of the pier. The equipment and materials sheds, located behind the main structure, will also be

demolished. Some parts of the sheds will be relocated and reassembled in another location onsite. Once the old dock portions are removed, we will infill it with land.

Read more below about how we will preserve the main concrete structure and façade.

What to expect during mooring dolphin demolition



A mooring dolphin is a structure used to tie ships to the terminal with ropes. You can see it stick out to the west of Centerm. No actual dolphins involved!

During the demolition of the mooring dolphin at the terminal, a barge with a crane will be used to remove the concrete piles one by one. There will be no disruptions to the SeaBus, as the barge will be positioned out of the SeaBus route.

Nearby residents and businesses can anticipate some noise and increased light levels. We are designing our work to reduce potential noise impacts and avoid or minimize excessive lighting during marine construction works. Mitigation measures include:

- Implementation of a construction environmental management plan
- Environmental monitoring
- Adopting best management practices for construction lighting (such as lighting that points downward)
- Modern equipment that minimizes noise

Ballantyne pier heritage preservation

Ballantyne pier, located on the east side of Centerm, is a dock that was built in the 1920s. It was initially used for shipping cargo, and was renovated in the 1990s to create a cruise ship terminal. The terminal was closed in 2014.

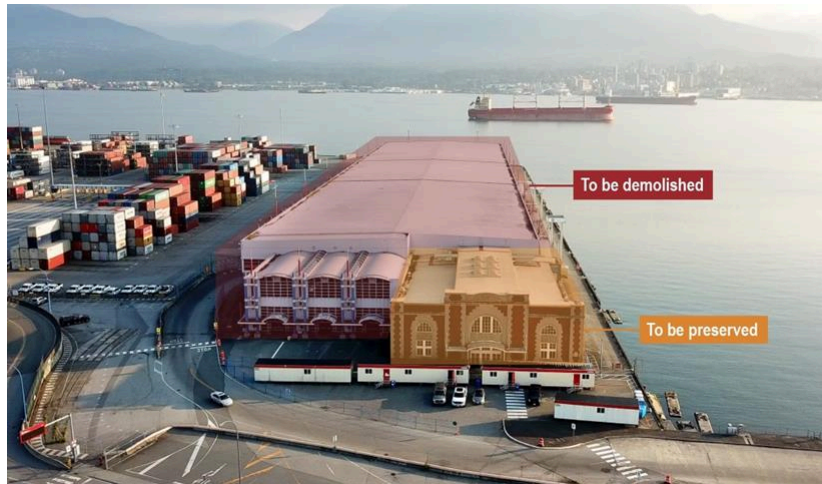
There are three buildings Ballantyne pier: The Ballantyne heritage building, a building built for Expo86, and a giant white shed. The Ballantyne building is a City of Vancouver registered historic building.

As part of the project, we will be preserving the Ballantyne heritage building, but the other two buildings will be demolished.

Our goal is to achieve a minimum of LEED® Gold certification for green buildings. Learn more on **LEED® certification**. The façade and concrete structural elements that are of historic importance will be repurposed as a new operations facility for the terminal operator.

What makes this building a registered historical site?

Ballantyne heritage building’s key design features, façade, dedicatory plaques, and large multi-paned windows makes this a building of historical significance in our city.



Pictured: Ballantyne pier and areas that will be preserved and demolished.

New modular office space

In mid-October the construction team will be moving into new modular office spaces in orange trailers on site. These trailers will be located on Burrard Dock, east of the Ballantyne pier.



Pictured: Example of construction office trailer that will be brought on site.

Centerm Community Fund now taking applications

The application intake period for the **Centerm Community Fund** is now open.



Organizations in the Downtown Eastside (including Chinatown, Gastown, Railtown), Strathcona, Hastings-Sunrise and Grandview-Woodlands can apply for funding for their community initiatives through this fund.

Applications must be received during the intake period to be

considered, so don't hesitate to apply!

Submit by: November 29, 2019

Learn more: www.portvancouver.com/centerm-fund

About the projects

The Centerm Expansion Project and South Shore Access Project are being completed to help meet anticipated near-term demand for containers shipped through the Port of Vancouver. The project includes a new overpass for Centennial Road, making Waterfront Road a continuous road along the South Shore, and a reconfiguration and expansion of the Centerm terminal.

The project is being delivered by Centennial Expansion Partners (CXP) and is anticipated to be complete by the end of 2021.

Interested in seeing the full construction schedule?

[Download the construction activities and timelines PDF](#)



Centerm: Current view



Centerm: Rendering of view following construction completion

Contact us

If you have not already done so, please sign up to receive regular updates of these projects. You can subscribe [here](#).

Website: www.portvancouver.com/centerm-expansion

Enquiries related to construction can be directed to CXP at 604.910.5785 or zstrand@cxp-jv.com.

Enquiries related to the projects can be directed to 604.665.9563 or centerm.expansion@portvancouver.com.

The Vancouver Fraser Port Authority is governed by the Canada Marine Act. Our mission is to enable Canada's trade objectives, ensuring safety, environmental protection and consideration for local communities. Our vision is to be the world's most sustainable port.

Vancouver Fraser Port Authority
100 The Pointe
999 Canada Place
Vancouver, BC V6C 3T4
Telephone: 604.665.9563

To stop receiving these emails click "Unsubscribe" below at any time. Please contact us if you have any questions or concerns.

[Edit your subscription](#) | [Unsubscribe](#)