

Port Information Guide

Notification date: December 18th, 2018

Preamble

In accordance with the *Canada Marine Act*, 1998, Section 57 – Notice, the Vancouver Fraser Port Authority is proposing amendments to the practices and procedures contained within the Port Information Guide. These practices and procedures are applicable to all *ship(s)* operating within the jurisdiction of the port authority. A *ship*, as defined by the *Canada Marine Act*, 1998, and *Port Information Guide* means, every description of vessel, boat or craft designed, used or capable of being used solely or partly for marine navigation, whether self-propelled or not and without regard to the method of propulsion, and includes a sea-plane and a raft or boom of logs or lumber.

This notice of amendment is posted publicly, for a 30-day period, to notify industry, stakeholders and the public of several intended amendments to the Vancouver Fraser Port Authority's practices and procedures document, the Port Information Guide.

Anyone that may be affected by these amendments may comment in writing by January 25th, 2019 to the attention of:

Marine Operations Specialist
portinfoguide@portvancouver.com

All comments received will be taken into consideration before the proposed amendments are implemented.

Summary

As a steward of Canada's largest port, the Vancouver Fraser Port Authority has developed practices and procedures applicable to all ships operating within defined vessel operating areas in the port authority's jurisdiction to support the safe and efficient movement of trade. These practices and procedures are available in the Port Information Guide, in accordance with Section 56 of the *Canada Marine Act*.

Under section 56 (1) of the Canada Marine Act, a Canada Port Authority may, for the purpose of promoting safe and efficient navigation or environmental protection in the waters of the port, with respect to ships or classes of ships,

- (a) monitor ships about to enter or within the waters of the port;
- (b) establish the practices and procedures to be followed by ships;
- (c) require ships to have the capacity to use specified radio frequencies; and
- (d) establish traffic control zones for the purposes of paragraphs (a) to (c).

The Vancouver Fraser Port Authority proposes to make the following amendments to the Port Information Guide to further promote safety within the Port of Vancouver:

- The formalization of speed limit areas in the First Narrows Traffic Control Zone (TCZ-1), Coal Harbour, and areas in Indian Arm, and other practices and procedures, including making mandatory the current voluntary 15-knot speed reduction in the First Narrows.
- Introducing new speed limit areas in Indian Arm and Port Moody.
- Introducing new reporting requirements for vessels designed to carry 12 or more passengers within the Burrard Inlet Traffic Control Zones (TCZ-1 and TCZ-2).
- Updated language regarding environmental protection, minimum safety clearances, and other language related to the operation of commercial vessels in the Port of Vancouver.

The proposed amendments are listed in the below table, in chronological order as they appear in the Port Information Guide. The table is organized to include the relevant section, the current language in the Port Information Guide (if applicable), and the proposed new or revised language.

Proposed amendments

Section	Current Language	Proposed Language
4.8 Dangerous Goods	Not applicable (n/a)	Net Explosives Quantities (NEQ) for appropriate facilities, as established by Natural Resources Canada, are available on the Pacific Gateway Portal.
8.2 Speed	Obey the five-knot speed limit within Bedwell Bay, Belcarra Bay, Deep Cove, Strathcona Park and Coal Harbour. Additionally, there is a speed limit of 10 km/h in Grant Narrows.	<p>Vessels navigating in the following areas are required to adhere to established speed limits as described below.</p> <p>Coal Harbour: All vessels, excluding the Seabus, must navigate at a safe speed not to exceed five knots through the water. The Coal Harbour speed restriction zone is bound by a line drawn from Prospect Point to Burnaby Shoal to Canada Place to Centerm and all areas west to the head of Coal Harbour (area shown in the image below).</p> <p>First Narrows Traffic Control Zone (TCZ-1): Tier 1 vessels must transit or manoeuvre within TCZ-1 at a safe speed, not to exceed 10 knots through the water when running free (i.e. untethered), and seven knots through the water when tethered, except when safety of navigation requires otherwise. Tier 2 vessels within TCZ-1 must transit or manoeuvre at a safe speed, not to exceed 15 knots through the water. The TCZ-1 area is defined in section 8.12 (area shown in the image below).</p> <p>Indian Arm – South: All vessels must navigate at a safe speed not to exceed 10 knots through the water. The Indian Arm – South speed restriction zone is bound to the north by a line extending from the Jug Island</p>

		<p>west to the mainland at the northern entrance of Deep Cove, and to the south by a line extending east / west from the southern tip of Boulder Island (area shown in the image below).</p> <p>Deep Cove: All vessels must navigate at a safe speed not to exceed five knots through the water. The Deep Cove speed restriction zone is bound to the west by a line drawn north / south across the entrance to Deep Cove.</p> <p>Grey Rocks Island: All vessels must navigate at a safe speed not to exceed five knots through the water. The Grey Rocks Island speed restriction zone is bound by a line drawn north / south from the western most point of Grey Rocks Island, to a line drawn east / west from the southernmost point of Grey Rocks Island.</p> <p>Belcarra Bay: All vessels must navigate at a safe speed not to exceed five knots through the water. The Belcarra Bay speed restriction zone is bound by a line drawn from the north west point of Boulder Island to the southern point of Hamber Island, and from the southern point of Boulder Island due east to the mainland.</p> <p>Bedwell Bay: All vessels must navigate at a safe speed not to exceed five knots. The Bedwell Bay speed restriction zone is bound by a line, which follows the overhead power lines.</p> <p>Addition of speed limit area graphics for Burrard Inlet, Indian Arm (North), Indian Arm (South) and Port Moody (see images one, two, three, and four below).</p>
8.12 First Narrows TCZ Procedures (TCZ-1) > Speed Restrictions	Tier 2 vessels within TCZ-1 must proceed at a safe speed which will allow them to properly respond to the prevailing circumstances and conditions.	Tier 2 vessels within TCZ-1 must transit or manoeuvre at a safe speed, not to exceed 15 knots through the water.
8.12 First Narrows TCZ Procedures (TCZ-1) > Vertical Clearance	n/a	At the discretion of the port authority and the Pacific Pilotage Authority (PPA), cruise vessels may be exempt from the requirement to conduct an air draft survey prior to transit.
8.12 First Narrows TCZ Procedures (TCZ-1)	49 metres	Update maximum allowable beam to 51.25 metres
8.12 First Narrows TCZ Procedures (TCZ-1) > Transit Windows	N/a	For planning purposes only, agents can use the Coast Tidal Windows online tool available on the PPA's website.

8.13 Second Narrows TCZ Procedures (TCZ-2) > Transit Windows	N/a	For planning purposes only, agents can use the Coast Tidal Windows online tool available on the PPA's website.
8.12 First Narrows TCZ Procedures (TCZ-1) > Tier 2 Vessel Regulations including Pleasure Craft	n/a	Tier 2 vessels certified to carry 12 or more passengers must be in receipt of clearance from Marine Communications and Traffic Services (MCTS) prior to entering TCZ-1.
8.13 Second Narrows TCZ Procedures (TCZ-2) > Tier 2 Vessel Regulations including Pleasure Craft	n/a	Tier 2 vessels certified to carry 12 or more passengers must be in receipt of clearance from MCTS prior to entering TCZ-2.
8.13 Second Narrows TCZ Procedures (TCZ-2) > Table 1: Second Narrows TCZ (TCZ-2) Transit Procedures Deep Sea Vessels – Summary Matrix	T = tethered tug required	T = tethered tug required, see Table 2 below for further detail on requirements.
8.14 Fraser River TCZ Procedures (TCZ-4) > Transit Windows	N/a	For planning purposes only, agents can use the Fraser River Tidal Windows online tool available on the PPA's website.
8.18 Display of Signals and Lights	n/a	Seabus vessels, operated by Translink between Vancouver's central waterfront terminal and North Vancouver's Lonsdale Quay terminal, along the chartered ferry route, must be fitted with and visibly display at all times, a white, all-round strobe light.
8.19 Recreational Vessels	n/a	All mariners must maintain a minimum of 50 metres from any commercial or deep sea vessel at berth.
8.19 Recreational Vessels	Images of Safe Boating Guides, Burrard Inlet and Fraser River.	-Deleted-
8.19 Recreational Vessels	Within Bedwell Bay, Belcarra Bay, Deep Cove, Strathcona Park and Coal Harbour a maximum speed of five knots is enforced. Within Grant Narrows there is a maximum speed of five knots approximately ten kilometers per hour).	With respect to speed, all recreational boaters must be aware that the port authority has designated specific areas of the port as either Traffic Control Zones or speed control zones where speed restrictions apply to recreational boaters. These areas include First Narrows TCZ, Coal Harbour, areas of Indian Arm, and Port Moody. For more information on these areas and the speed restrictions, refer to section 8.2 Speed.
8.20 Fishing Vessels	n/a	In all areas of the port, vessels engaged in fishing should be aware of the Collision Regulations established under the Canada Shipping Act, 2001. Specifically Rule 9, Narrows Channels, which states "a vessel engaged in fishing shall not impede the passage of any other vessel navigating within a narrow channel or fairway".
14.5 Environmental Requirements	Anyone who sees a vessel discharging sewage illegally is urged to record the incident (photo/video and details) and report it to VFPA's community complaint line at +1 604 665 9004. The port	Anyone who suspects a vessel is or has discharged black and/or grey water is urged to record the incident (photo/video and details) and report it to appropriate authorities. For concerns related to non-compliance of pleasure crafts, contact Transport Canada's

	<p>authority will forward the information to the appropriate regulator.</p>	<p>Office of Boating Safety at 604.666.2681.</p> <p>Concerns related to sewage discharge can be reported to the BC Provincial Emergency Program at 1.800.663.3456.</p> <p>For all other marine pollution incidents, report to Canadian Coast Guard Environmental Response on VHF Channel 16 or by phone 1.800.889.8852 (24 hours).</p> <p>Accidental discharges and/or reports of non-compliance related to black and grey water discharge by deep sea or other commercial vessels should also be reported to the operations center at 604.665.9086.</p> <p>Addition of infographic titled "<i>Transport Canada Office of Boating Safety - Complying with Sewage Discharge Regulations</i>" (see image five below).</p>
<p>16.12 Seaman’s Missions</p>	<p>There is a mission to seafarers in Vancouver with two locations. Services include transportation, access to phone and internet, chaplaincy, recreation and local advice. For more information visit the website at http://www.flyingangel.ca or call +1 604 253 4421</p>	<p>The Mission to Seafarers operates two locations within the Port of Vancouver. Locations include the Vancouver Waterfront and Roberts Bank Centre. Services include transportation, access to phone and internet, chaplaincy, recreation and local advice. For more information, including hours of operation, visit the website at http://www.flyingangel.ca or call 1.604.253.4421</p>
<p>Appendix J Port Sections Guide – Fraser River – FSD (2,3,4)</p>	<p>n/a</p>	<p>Standby tug requirements: Deep sea vessels moored at FSD, with a barge alongside for cargo operations, require a tug to stand by the barge at all times during freshet currents. Any exemption must be requested and approved by the port authority operations centre.</p>



Image 1: Burrard Inlet – Speed Limit Areas



Image 2: Indian Arm (North) – Speed Limit Areas

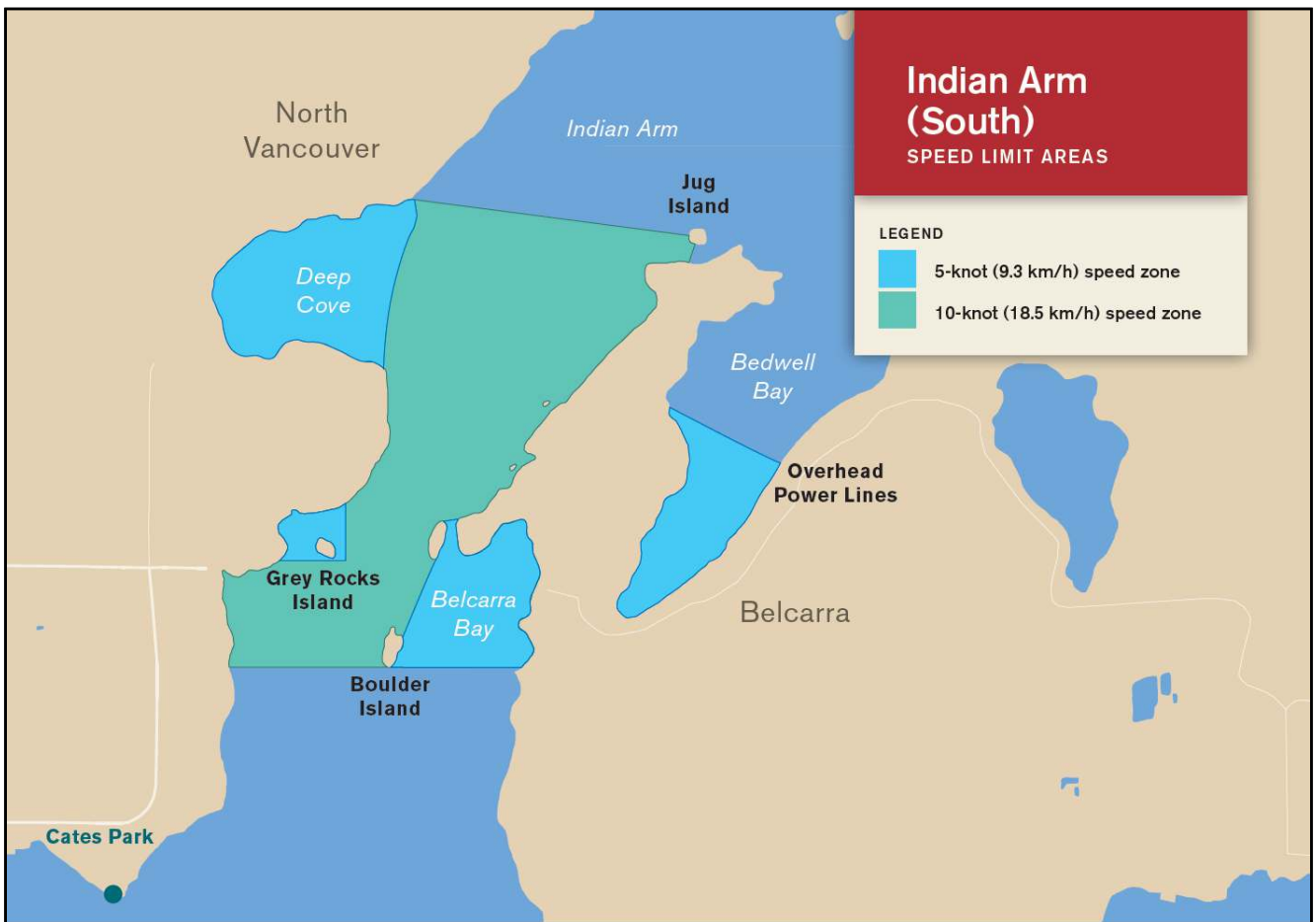


Image 3: Indian Arm (South) – Speed Limit Areas

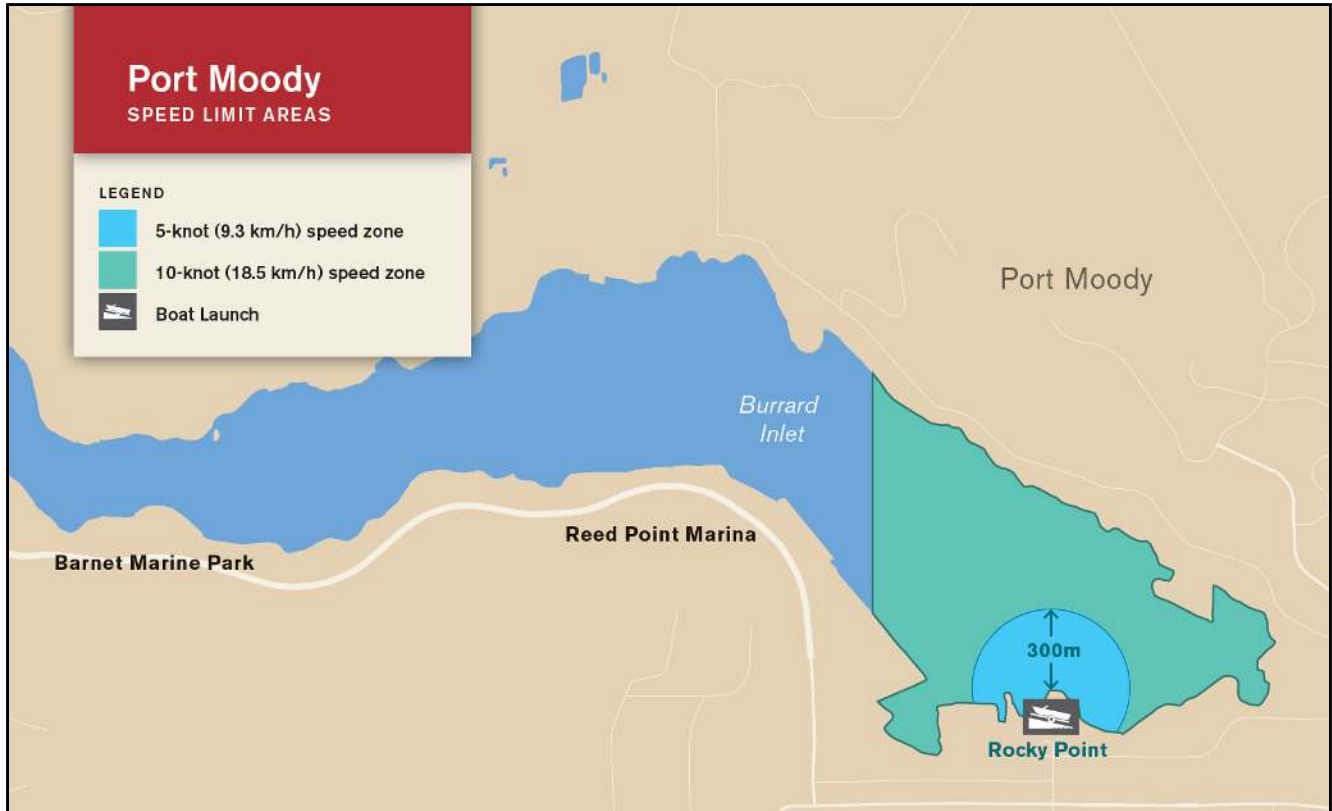


Image 4: Port Moody – Speed Limit Areas

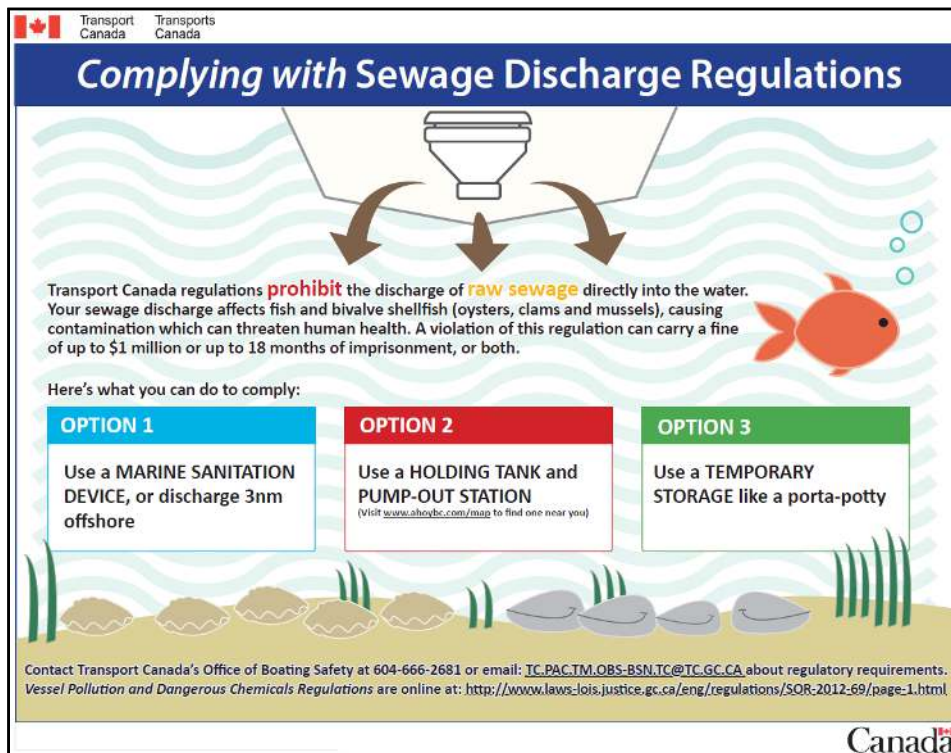


Image 5: Transport Canada Office of Boating Safety - Complying with Sewage Discharge Regulations