

# Columbia Container Ltd.

## VFPA Projects

2775 Commissioner Street, Vancouver



December 2017

# Columbia Containers Ltd. Projects

- Track 5 – Design completed
- Bight and Offsetting Project – Design Completed
- Grain Transload Facility – In Construction

# Track 5 Project

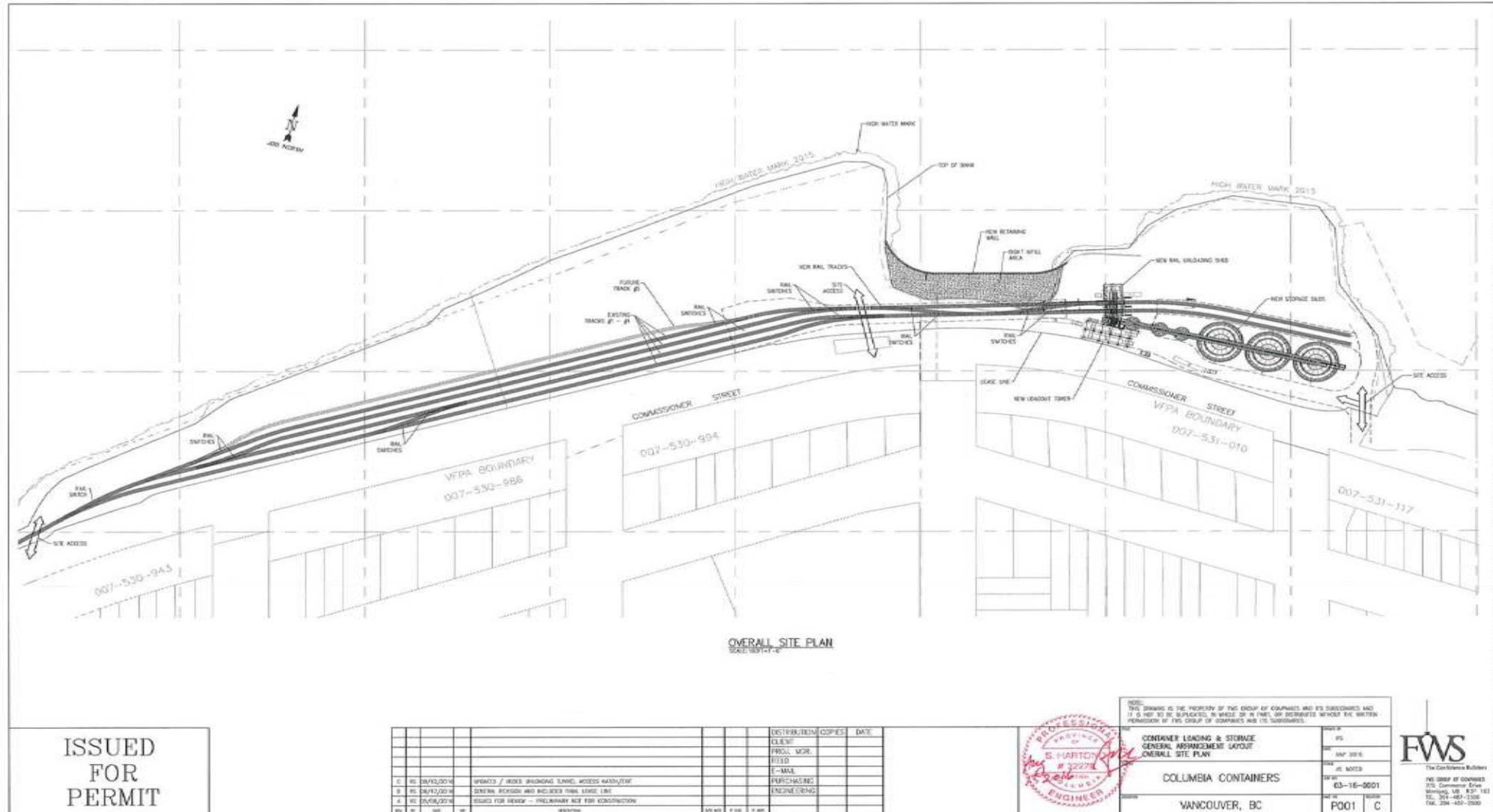
- General Scope

- Adding a parallel 5<sup>th</sup> rail track, directly north of existing
- Approximately 400m long
- Storage for an additional 14 rail cars

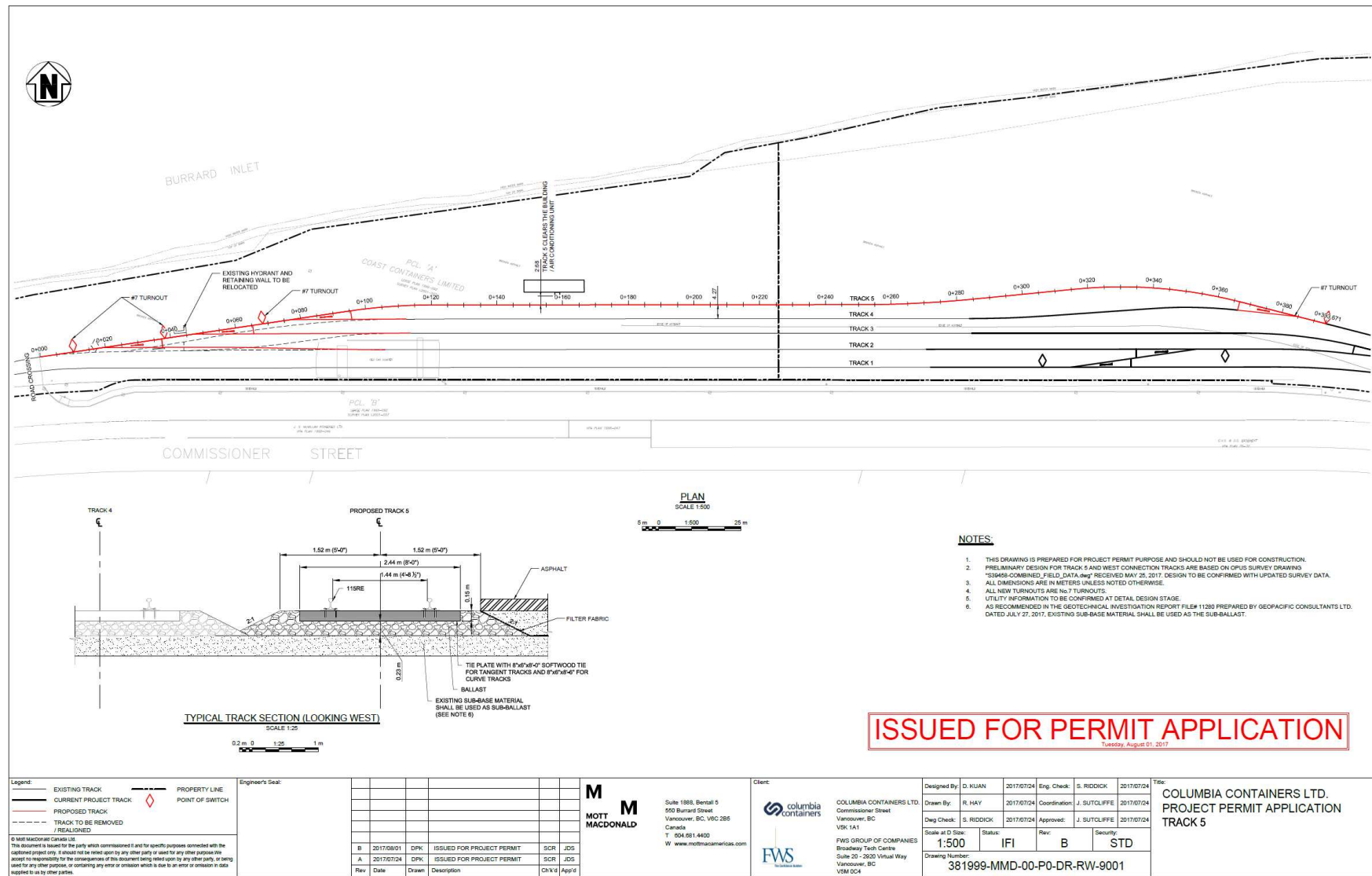
- Impact on Operations

- No Change to plant production or yearly volume of rail cars
- Allows for accepting larger orders of product at one time
- Improved organization and sorting of rails cars
- Reduced number of shuttles to and from CCL yard

# Site Plan



# Track 5 Plan



# Track 5 Project

- Construction
  - Start in February 2018
  - Work to be performed within standard VFPA Construction Hours
  - Duration will be 4 to 6 weeks
  - Low volume of materials arriving or leaving

# Bight and Offsetting Projects

- Bight Project

- Remains as previously presented
- Infilling of shoreline to accommodate rail and truck traffic
- New retaining wall and extended asphalt to the north

- Offsetting Project

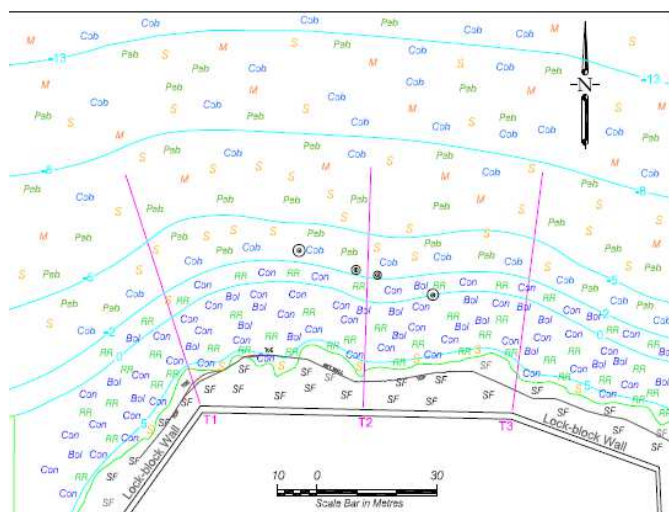
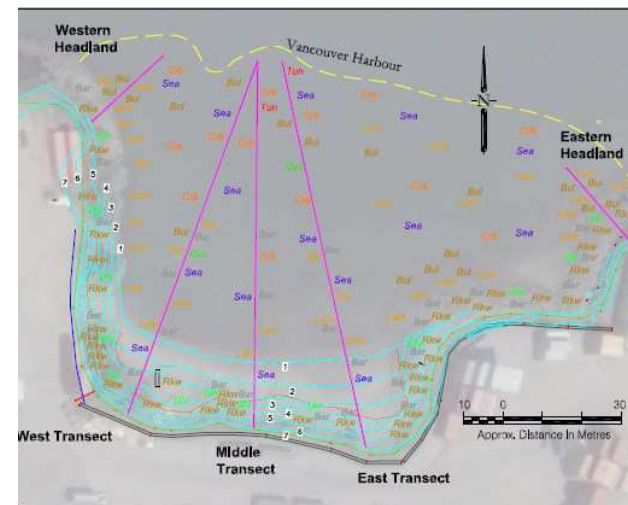
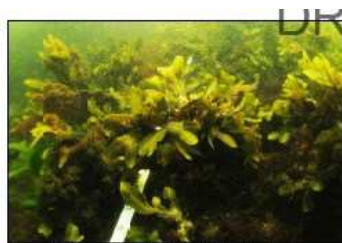
- Infill work has some impact on existing marine environment
- A marine environment improvement project will be completed
- It is an intertidal bench or beach to increase marine diversity
- Located on the northwest corner of the New Brighton truck lot

# Project Locations





# Marine Studies

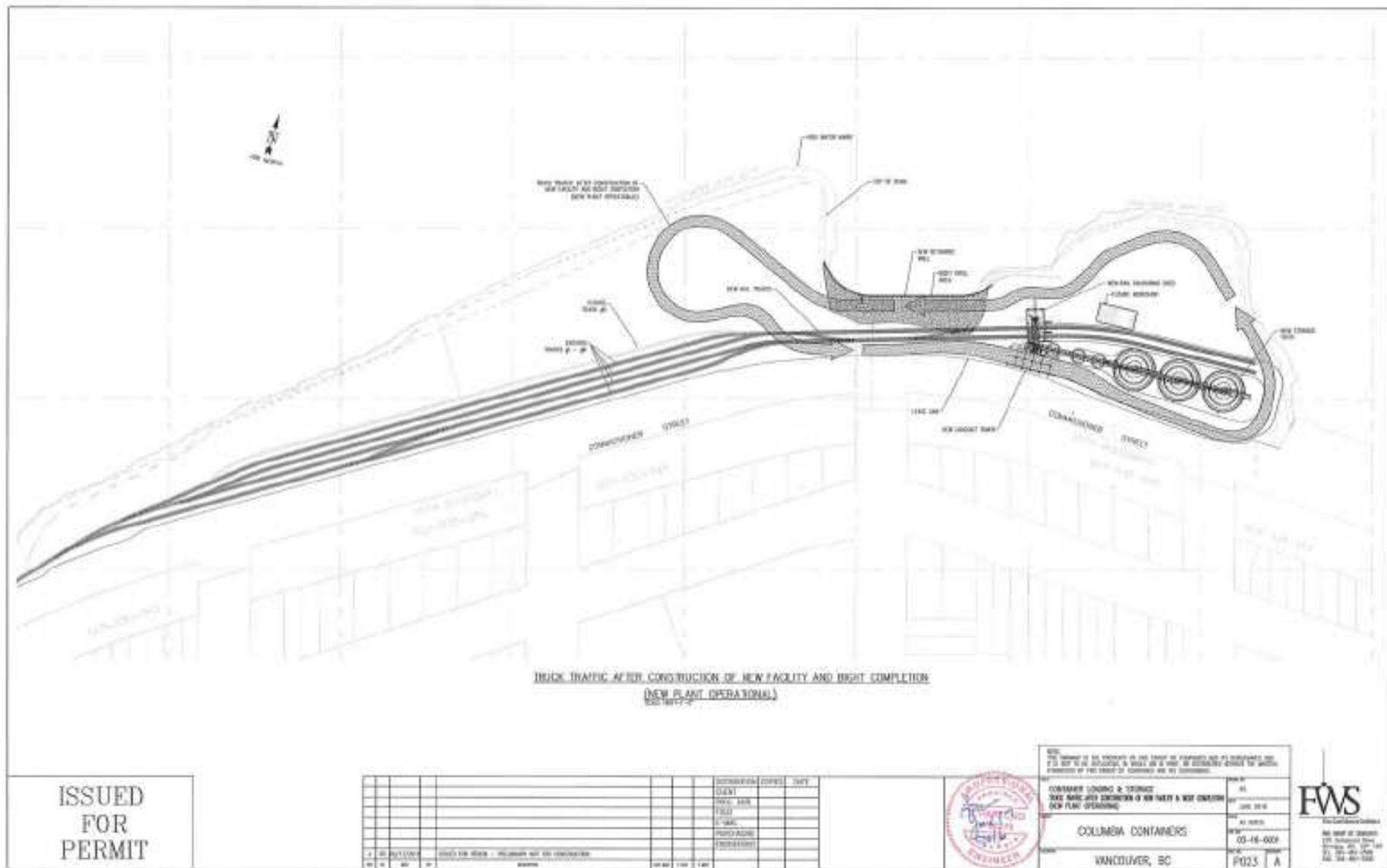


# Bight and Offsetting Projects

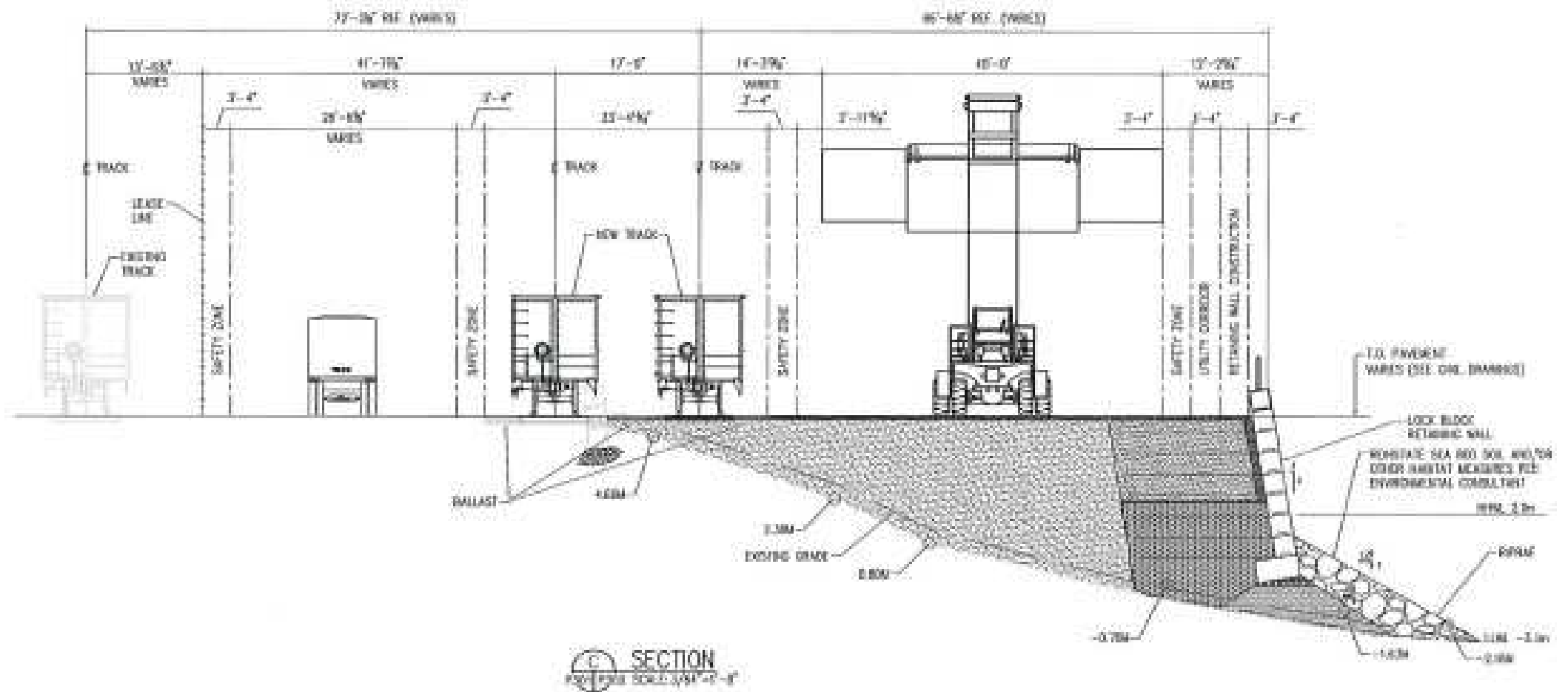
- Impact on Operations

- No Change to plant production or yearly volumes
- Creates a required travel path for trucks and rail
- Removes CCL loading truck traffic off of Commissioner
- Improves safety within narrow corridor

# Infill Project Goal



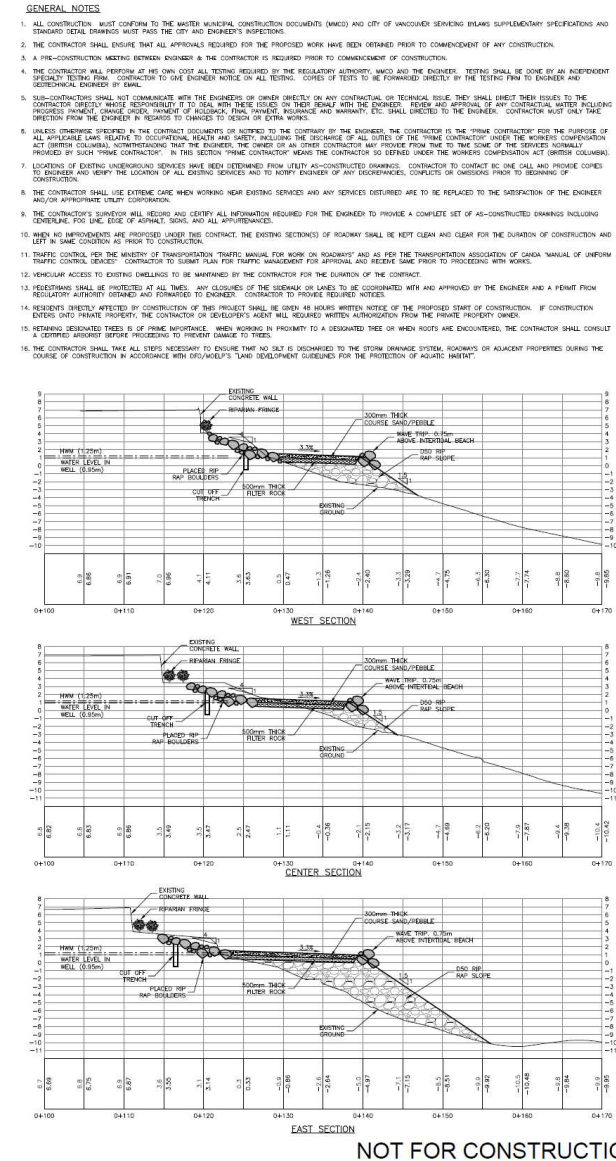
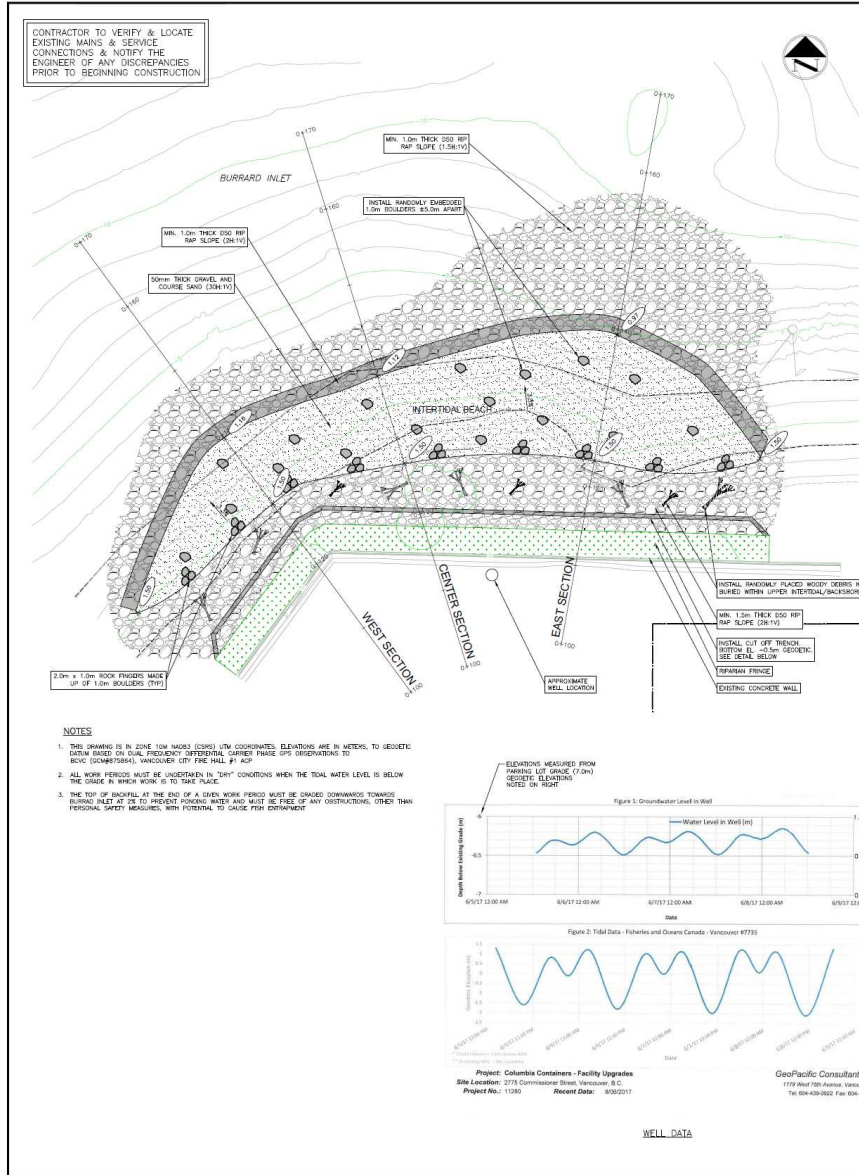
# Bight Infill Section



[illegible]



# Offsetting Plan



# CREUS

## Engineering

Civil Engineers & Project Managers

401-447-7483 • 100 UNIVERSITY AVENUE, SUITE 100 • VANCOUVER, BC, CANADA  
 TEL: 604-687-6073      WEB: 172.17.0.100    WWW.CREUS.CA

### DRAWING LEGEND

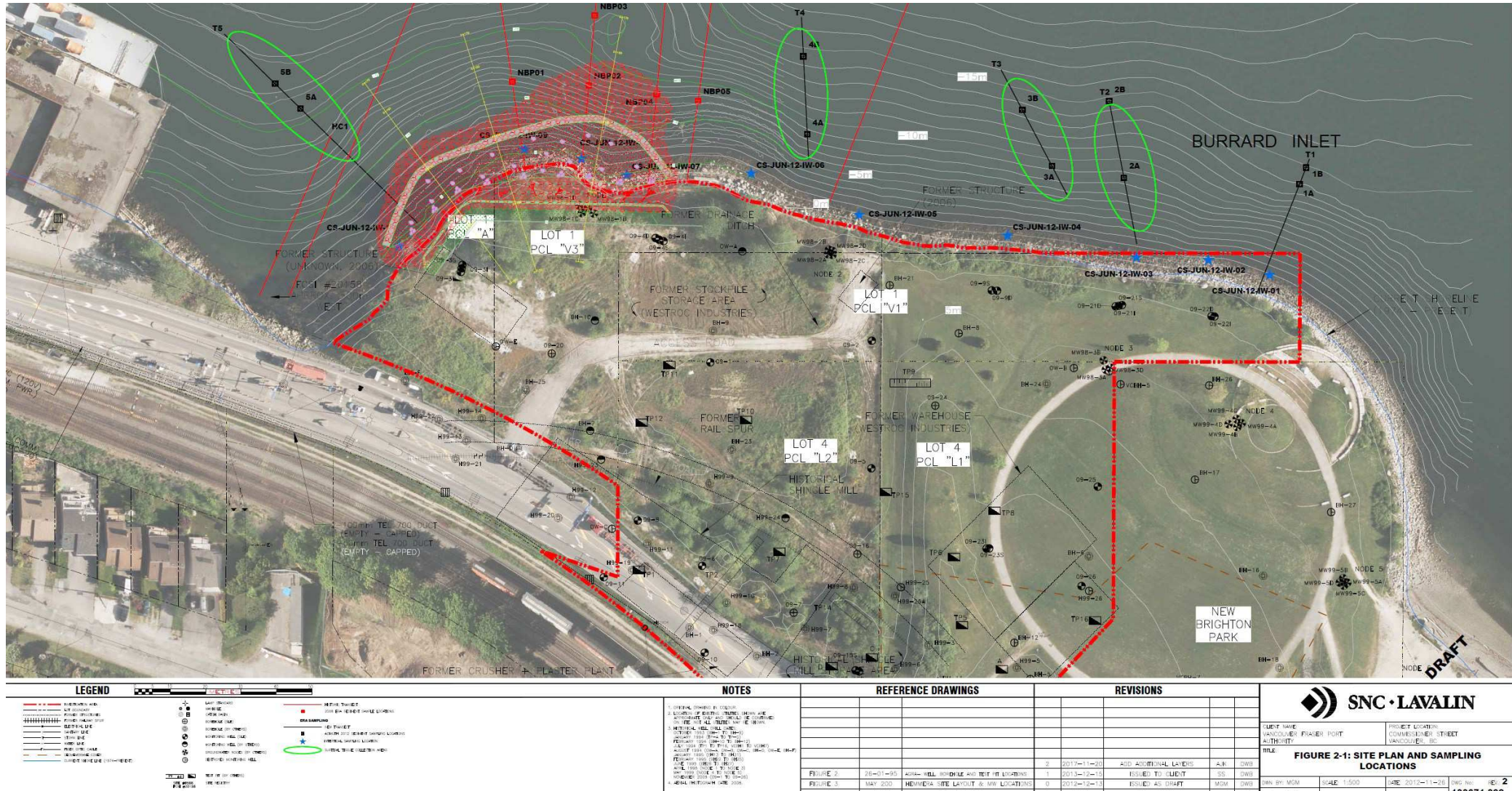
EXISTING	PROPOSED	TO BE RECEIVED
<b>EXIST. LINE</b> 1/8" = 1'-0" 1/4" = 1'-0" 3/8" = 1'-0" 1/2" = 1'-0" 5/8" = 1'-0" 3/4" = 1'-0" 7/8" = 1'-0" 1" = 1'-0" 1 1/8" = 1'-0" 1 1/4" = 1'-0" 1 1/2" = 1'-0" 1 3/4" = 1'-0" 2" = 1'-0" 2 1/4" = 1'-0" 2 1/2" = 1'-0" 2 3/4" = 1'-0" 3" = 1'-0" 3 1/4" = 1'-0" 3 1/2" = 1'-0" 3 3/4" = 1'-0" 4" = 1'-0" 4 1/4" = 1'-0" 4 1/2" = 1'-0" 4 3/4" = 1'-0" 5" = 1'-0" 5 1/4" = 1'-0" 5 1/2" = 1'-0" 5 3/4" = 1'-0" 6" = 1'-0" 6 1/4" = 1'-0" 6 1/2" = 1'-0" 6 3/4" = 1'-0" 7" = 1'-0" 7 1/4" = 1'-0" 7 1/2" = 1'-0" 7 3/4" = 1'-0" 8" = 1'-0" 8 1/4" = 1'-0" 8 1/2" = 1'-0" 8 3/4" = 1'-0" 9" = 1'-0" 9 1/4" = 1'-0" 9 1/2" = 1'-0" 9 3/4" = 1'-0" 10" = 1'-0" 10 1/4" = 1'-0" 10 1/2" = 1'-0" 10 3/4" = 1'-0" 11" = 1'-0" 11 1/4" = 1'-0" 11 1/2" = 1'-0" 11 3/4" = 1'-0" 12" = 1'-0" 12 1/4" = 1'-0" 12 1/2" = 1'-0" 12 3/4" = 1'-0" 13" = 1'-0" 13 1/4" = 1'-0" 13 1/2" = 1'-0" 13 3/4" = 1'-0" 14" = 1'-0" 14 1/4" = 1'-0" 14 1/2" = 1'-0" 14 3/4" = 1'-0" 15" = 1'-0" 15 1/4" = 1'-0" 15 1/2" = 1'-0" 15 3/4" = 1'-0" 16" = 1'-0" 16 1/4" = 1'-0" 16 1/2" = 1'-0" 16 3/4" = 1'-0" 17" = 1'-0" 17 1/4" = 1'-0" 17 1/2" = 1'-0" 17 3/4" = 1'-0" 18" = 1'-0" 18 1/4" = 1'-0" 18 1/2" = 1'-0" 18 3/4" = 1'-0" 19" = 1'-0" 19 1/4" = 1'-0" 19 1/2" = 1'-0" 19 3/4" = 1'-0" 20" = 1'-0" 20 1/4" = 1'-0" 20 1/2" = 1'-0" 20 3/4" = 1'-0" 21" = 1'-0" 21 1/4" = 1'-0" 21 1/2" = 1'-0" 21 3/4" = 1'-0" 22" = 1'-0" 22 1/4" = 1'-0" 22 1/2" = 1'-0" 22 3/4" = 1'-0" 23" = 1'-0" 23 1/4" = 1'-0" 23 1/2" = 1'-0" 23 3/4" = 1'-0" 24" = 1'-0" 24 1/4" = 1'-0" 24 1/2" = 1'-0" 24 3/4" = 1'-0" 25" = 1'-0" 25 1/4" = 1'-0" 25 1/2" = 1'-0" 25 3/4" = 1'-0" 26" = 1'-0" 26 1/4" = 1'-0" 26 1/2" = 1'-0" 26 3/4" = 1'-0" 27" = 1'-0" 27 1/4" = 1'-0" 27 1/2" = 1'-0" 27 3/4" = 1'-0" 28" = 1'-0" 28 1/4" = 1'-0" 28 1/2" = 1'-0" 28 3/4" = 1'-0" 29" = 1'-0" 29 1/4" = 1'-0" 29 1/2" = 1'-0" 29 3/4" = 1'-0" 30" = 1'-0" 30 1/4" = 1'-0" 30 1/2" = 1'-0" 30 3/4" = 1'-0" 31" = 1'-0" 31 1/4" = 1'-0" 31 1/2" = 1'-0" 31 3/4" = 1'-0" 32" = 1'-0" 32 1/4" = 1'-0" 32 1/2" = 1'-0" 32 3/4" = 1'-0" 33" = 1'-0" 33 1/4" = 1'-0" 33 1/2" = 1'-0" 33 3/4" = 1'-0" 34" = 1'-0" 34 1/4" = 1'-0" 34 1/2" = 1'-0" 34 3/4" = 1'-0" 35" = 1'-0" 35 1/4" = 1'-0" 35 1/2" = 1'-0" 35 3/4" = 1'-0" 36" = 1'-0" 36 1/4" = 1'-0" 36 1/2" = 1'-0" 36 3/4" = 1'-0" 37" = 1'-0" 37 1/4" = 1'-0" 37 1/2" = 1'-0" 37 3/4" = 1'-0" 38" = 1'-0" 38 1/4" = 1'-0" 38 1/2" = 1'-0" 38 3/4" = 1'-0" 39" = 1'-0" 39 1/4" = 1'-0" 39 1/2" = 1'-0" 39 3/4" = 1'-0" 40" = 1'-0" 40 1/4" = 1'-0" 40 1/2" = 1'-0" 40 3/4" = 1'-0" 41" = 1'-0" 41 1/4" = 1'-0" 41 1/2" = 1'-0" 41 3/4" = 1'-0" 42" = 1'-0" 42 1/4" = 1'-0" 42 1/2" = 1'-0" 42 3/4" = 1'-0" 43" = 1'-0" 43 1/4" = 1'-0" 43 1/2" = 1'-0" 43 3/4" = 1'-0" 44" = 1'-0" 44 1/4" = 1'-0" 44 1/2" = 1'-0" 44 3/4" = 1'-0" 45" = 1'-0" 45 1/4" = 1'-0" 45 1/2" = 1'-0" 45 3/4" = 1'-0" 46" = 1'-0" 46 1/4" = 1'-0" 46 1/2" = 1'-0" 46 3/4" = 1'-0" 47" = 1'-0" 47 1/4" = 1'-0" 47 1/2" = 1'-0" 47 3/4" = 1'-0" 48" = 1'-0" 48 1/4" = 1'-0" 48 1/2" = 1'-0" 48 3/4" = 1'-0" 49" = 1'-0" 49 1/4" = 1'-0" 49 1/2" = 1'-0" 49 3/4" = 1'-0" 50" = 1'-0" 50 1/4" = 1'-0" 50 1/2" = 1'-0" 50 3/4" = 1'-0" 51" = 1'-0" 51 1/4" = 1'-0" 51 1/2" = 1'-0" 51 3/4" = 1'-0" 52" = 1'-0" 52 1/4" = 1'-0" 52 1/2" = 1'-0" 52 3/4" = 1'-0" 53" = 1'-0" 53 1/4" = 1'-0" 53 1/2" = 1'-0" 53 3/4" = 1'-0" 54" = 1'-0" 54 1/4" = 1'-0" 5		

# Offsetting Project Location





# Offsetting Project Overlay





# Bight Infill and Offsetting Projects

- Construction
  - Start in January/February 2018
  - Duration 12 to 16 weeks
  - Low tide night time shifts of 8 hours for 4 to 6 weeks
  - Majority of Rip Rap Rock arriving by Barge
  - Cleanup and stabilization of foreshores to occur
  - Infill and Offsetting work performed simultaneously

# Construction Activity



