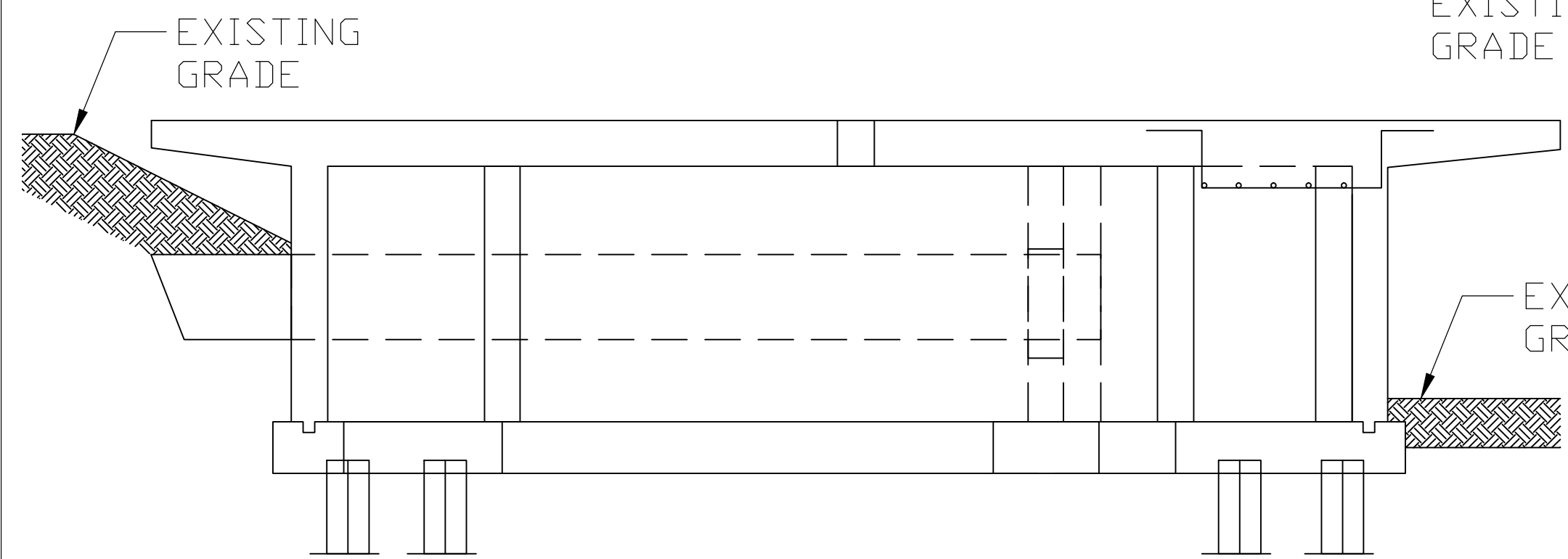
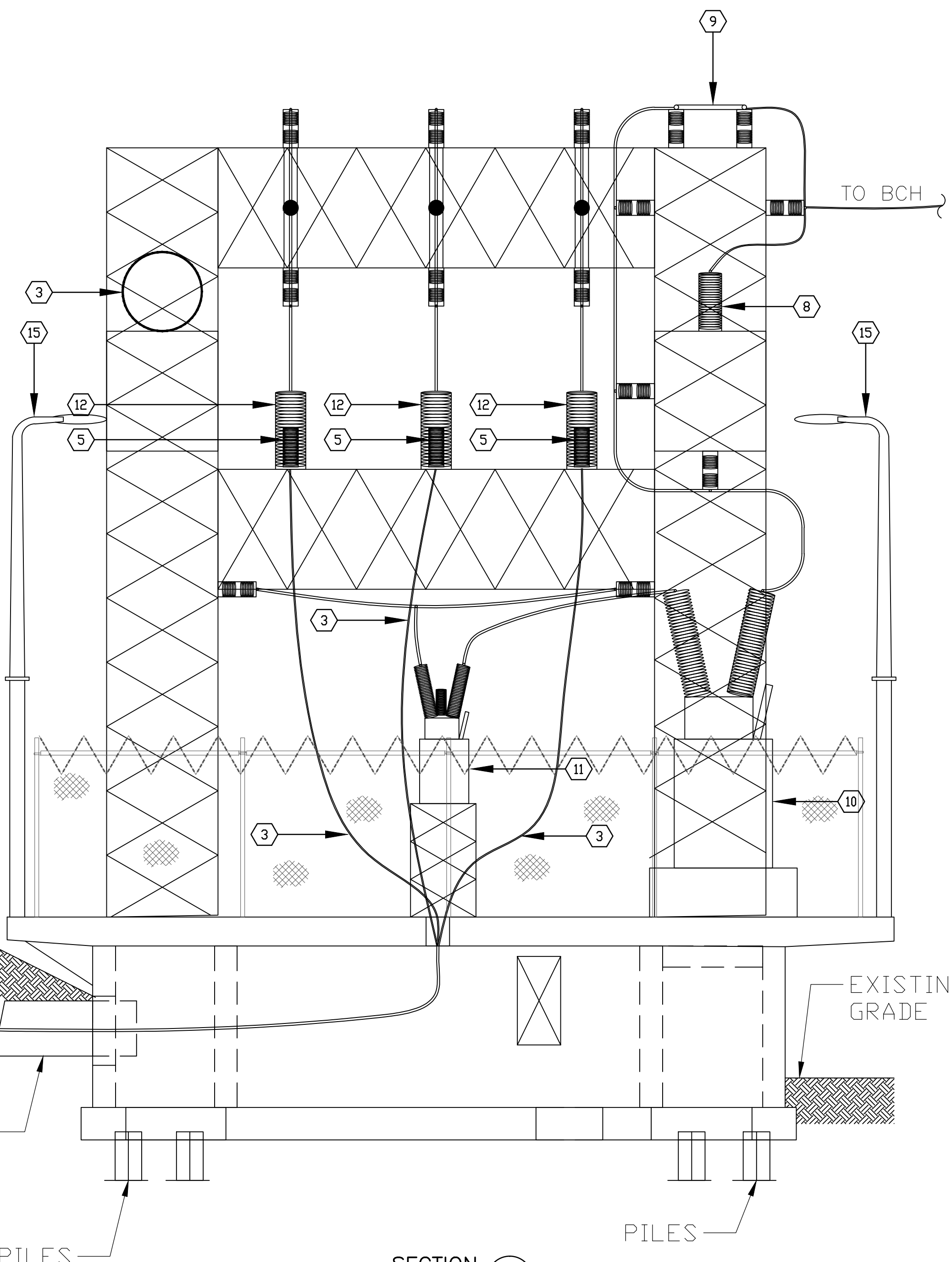


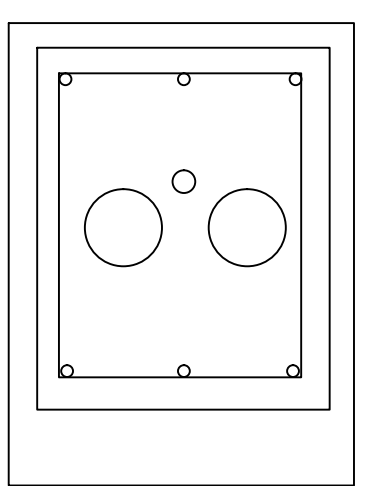
FOUNDATION PLAN VIEW
1/4"=1'-0"



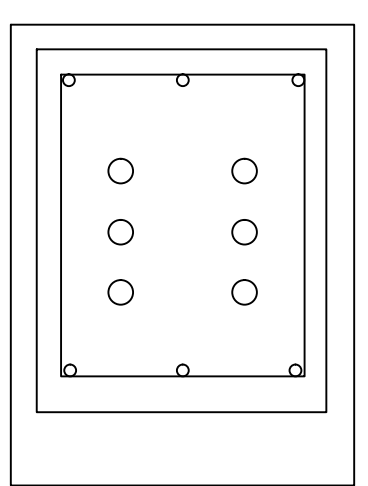
FOUNDATION SECTION A
1/4"=1'-0"



SECTION B
1/4"=1'-0"



SECTION C
1/4"=1'-0"



SECTION D
1/4"=1'-0"

LEX ENGINEERING LTD.
CONSULTING ENGINEERS
RICHMOND, BC CANADA

This drawing is the property of LEX Engineering Ltd. and its contents are secret and confidential to the client. Neither this drawing or any data or information shall be copied or reproduced without prior or written permission of LEX Engineering Ltd.

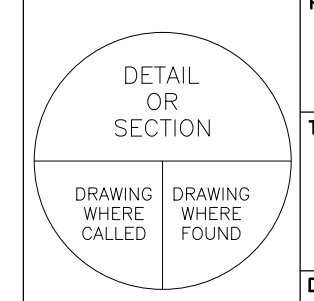
DATE ISSUED	APP.	REV.	DESCRIPTION	DWN.	APP.	DATE
		A	PRELIMINARY	MH	NS	2016/10/18

NOTES:

- USE DEMOLITION PROCEDURES AND MITIGATION STRATEGIES AS DEFINED BELOW.
- FOLLOW WORKSAFEBC & CANADA OCCUPATIONAL HEALTH AND SAFETY REGULATIONS FOR ANY DEMOLITION ACTIVITIES.

Equipment/Structures	Demolition Procedure	Environmental Hazard Concerns & Other Adverse Impacts	Mitigation Strategies
1 One (1) 12.47kV oil-filled transformer – Unit Substation 1 Room (Existing Sub 2 Room)	1. Unbolt cable connections; 2. Remove bushings; 3. Drain oil; 4. Unbolt base; 5. Remove from site & dispose	Accidental oil spills	Oil spill kits
2 Six (6) 69kV oil-filled cables & oil system – Switchyard & Indoor Vault	1. Unbolt cable connections; 2. Drain oil; 3. Use N ₂ to displace leftover oil in cables; 4. Cut cables and cap; 5. Tug out cables using power reel; 6. Remove from site and dispose	Accidental oil spills	Oil spill kits
3 Six (6) 69kV oil-filled cable terminations – Indoor Vault	1. Unbolt cable connections; 2. Drain oil; 3. Unbolt base; 4. Lower to ground; 5. Remove from site & dispose	Accidental oil spills	Oil spill kits
4 Six (6) 69kV oil-filled cable terminations – Switchyard	1. Unbolt cable connections; 2. Drain oil; 3. Unbolt base; 4. Lower to ground; 5. Remove from site & dispose	Accidental oil spills	Oil spill kits
5 One (1) 600V switchgear line-up – Unit Substation 3 & 4 Room (Existing Substation Room)	1. Unbolt cable connections; 2. Unbolt base; 3. Take apart; 4. Remove from site & dispose	Asbestos, Silica & Lead Exposure	Following WorkSafeBC work practices
6 Six (6) 69kV surge arresters – Indoor Vault	1. Unbolt cable connections; 2. Unbolt base; 3. Lower to ground; 4. Remove from site & dispose	None	N/A
7 Two (2) oil-filled power transformers – Indoor Vault	1. Unbolt cable connections; 2. Remove bushings; 3. Drain oil; 4. Unbolt base; 5. Remove from site & dispose	Accidental oil spills	Oil spill kits
8 Three (3) 69kV surge arresters – Switchyard	1. Unbolt cable connections; 2. Unbolt base; 3. Lower to ground; 4. Remove from site & dispose	None	N/A
9 Three (3) 69kV disconnect switches – Switchyard	1. Unbolt cable connections; 2. Unbolt base; 3. Lower to ground; 4. Remove from site & dispose	None	N/A
10 One (1) 69kV oil circuit breaker – Switchyard	1. Unbolt cable connections; 2. Drain oil; 3. Unbolt base; 4. Remove from site & dispose	Accidental oil spills	Oil spill kits
11 One (1) 69kV BCH metering kit (by BC Hydro) – Switchyard	1. Unbolt cable connections; 2. Drain oil; 3. Unbolt base; 4. Lower to ground; 5. Remove from site & dispose	Accidental Oil Spills	Oil spill kits
12 Six (6) 69kV current transformers – Switchyard	1. Unbolt cable connections; 2. Drain oil; 3. Unbolt base; 4. Lower to ground; 5. Remove from site & dispose	Accidental Oil Spills	Oil spill kits
13 Steel structures, railings, fences – Switchyard	1. Cut; 2. Lower to ground; 3. Remove from site & dispose	Demolition work noise	Working hours work only
14 Concrete foundations – Switchyard	1. Use hydraulic breakers to break concrete; 2. Cut rebar; 3. Remove from site	Demolition work noise & dust	1. Working hours work only; 2. Silt fencing; 3. Wheel wash stations
15 Light posts – Switchyard	1. Disconnect cables; 2. Cut and lower to ground; 3. Remove from site	None	N/A

DO NOT scale this drawing



Cargill

PROJECT: NORTH VANCOUVER BC

TITLE: EXISTING 66kV SUBSTATION (SWP) PLAN, ELEVATION AND DEMOLITION NOTES

DWG. No.: A1-15019-D002

DATE: OCT 18, 2016

SCALE: AS SHOWN

DRAWN: MH

APPROVED: NS