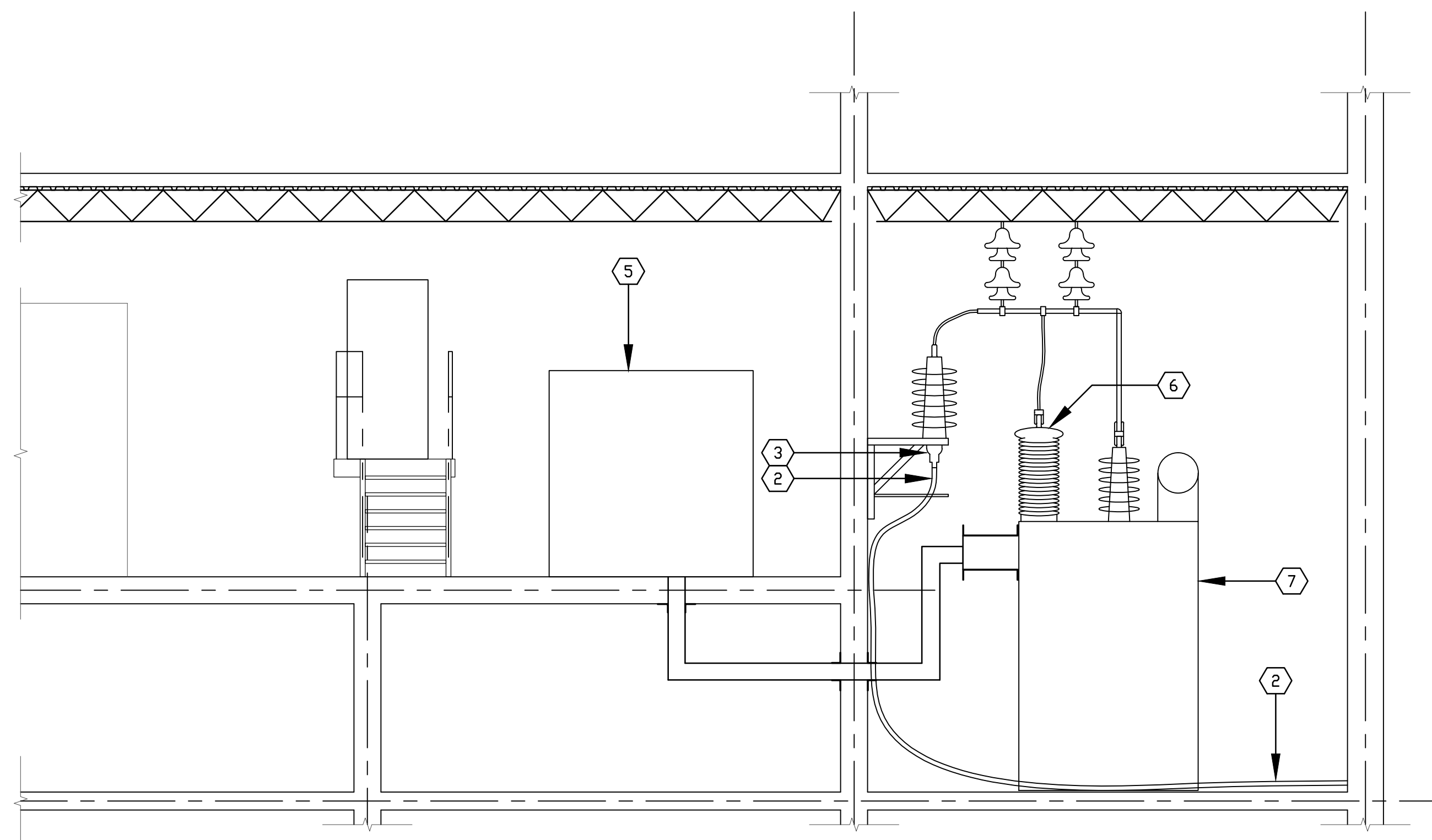
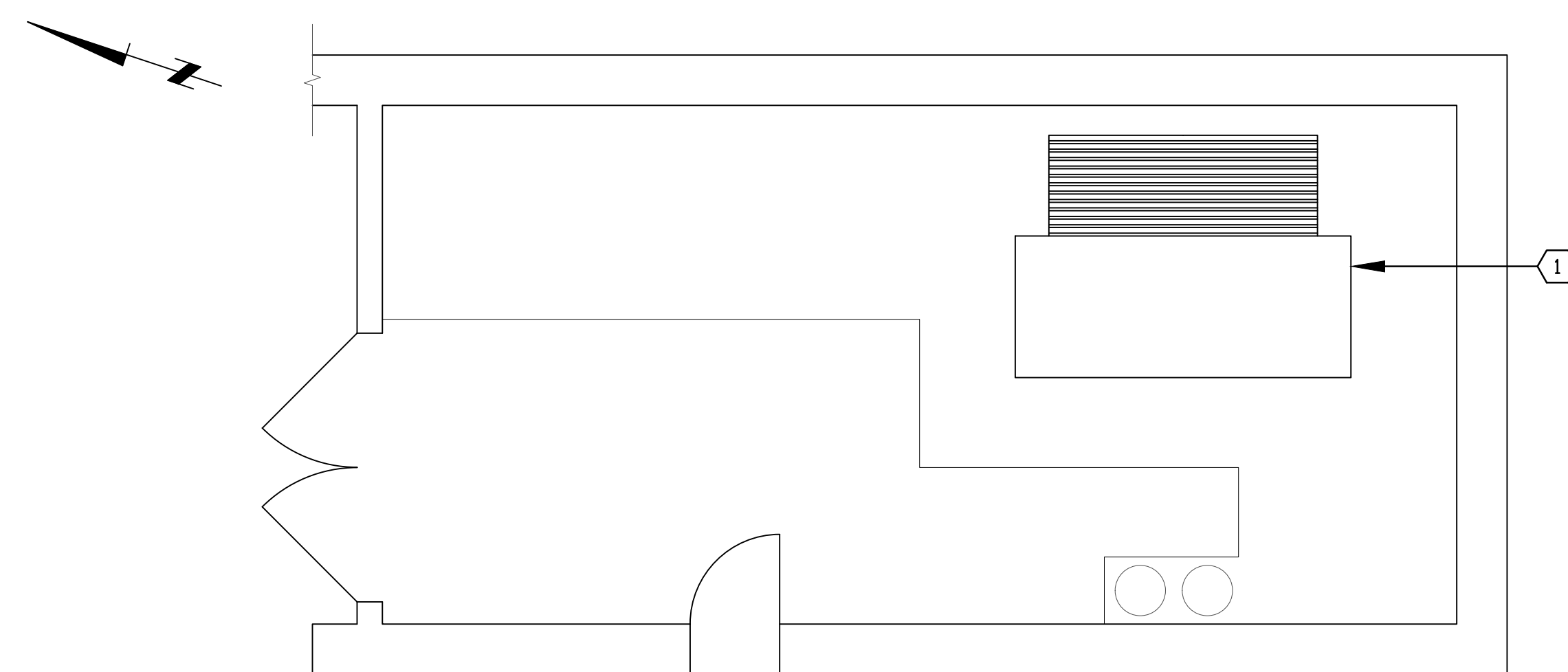


**SUBSTATION & XFMR VAULT PLAN VIEW**  
 $\frac{1}{4}''=1'-0''$



**SECTION A**  
 $\frac{1}{4}''=1'-0''$



**UNIT SUB 1 (SUB 2) PLAN VIEW**  
 $\frac{1}{4}''=1'-0''$

**NOTES:**

1. USE DEMOLITION PROCEDURES AND MITIGATION STRATEGIES AS PER DWG. A1-15019-D002.
2. FOLLOW WORKSAFEBC & CANADA OCCUPATIONAL HEALTH AND SAFETY REGULATIONS FOR ANY DEMOLITION ACTIVITIES.

**LEX ENGINEERING LTD.**  
 CONSULTING ENGINEERS  
 RICHMOND, BC CANADA

This drawing is the property of LEX Engineering Ltd. and its contents are secret and confidential to the client. Neither this drawing or any data or information shall be copied or reproduced without prior or written permission of LEX Engineering Ltd.

DATE ISSUED	APP.	REV.	DESCRIPTION	DWN.	APP.	DATE
		A	PRELIMINARY	MH	NS	2016/10/18

DO NOT <scale this drawing>

DETAIL OR SECTION

DRAWING WHERE CALLED

DRAWING WHERE FOUND

		DATE	OCT 18, 2016
PROJECT		SCALE	AS SHOWN
TITLE		TEMPLATE No.	
EXISTING SUBSTATION ROOM, SUB 2 ROOM & TRANSFORMER VAULT PLANS, SECTIONS & DEMOLITION NOTES		DRAWN	MH
DWG. No.		APPROVED	NS
A1-15019-D001			