



PORT of
vancouver



NEW BRIGHTON PARK SHORELINE HABITAT RESTORATION PROJECT

East Vancouver Port Lands and Liaison Committee

Presented by:

Charlotte Olson, Vancouver Fraser Port Authority

Nick Page, Vancouver Board of Parks and Recreation

April 12, 2016

AGENDA

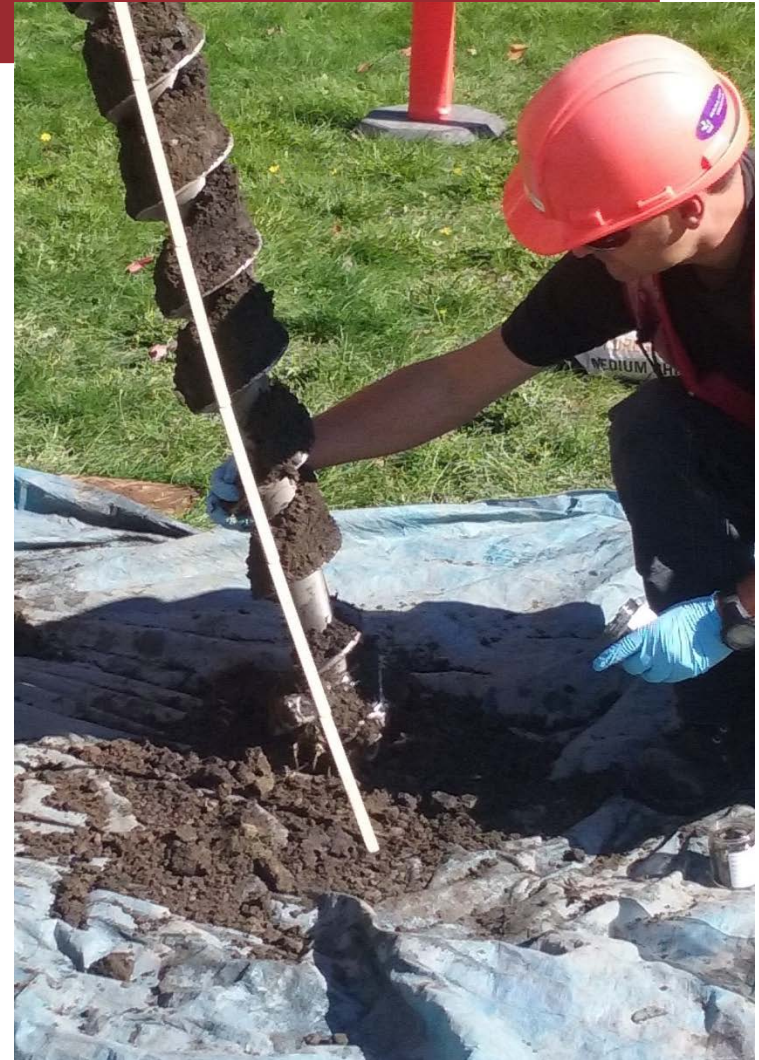
- Project background & environmental studies
- Public engagement to date
- Proposed design
- Upcoming public engagement opportunities
- Next steps
- Questions

BACKGROUND

- The proposed project responds to the port authority objective of creating and restoring fish and wildlife habitat, and Vancouver Board of Parks and Recreation goals for supporting healthy ecosystems and increasing access to nature across the park system.
 - New Brighton Park Master Plan (1997)
 - Hastings Park / PNE Master Plan (2010)
 - Biodiversity Strategy (2016)
- New Brighton Park was selected because of compatibility with park master plans, value for fish and wildlife and location on Burrard Inlet.

ENVIRONMENTAL STUDIES

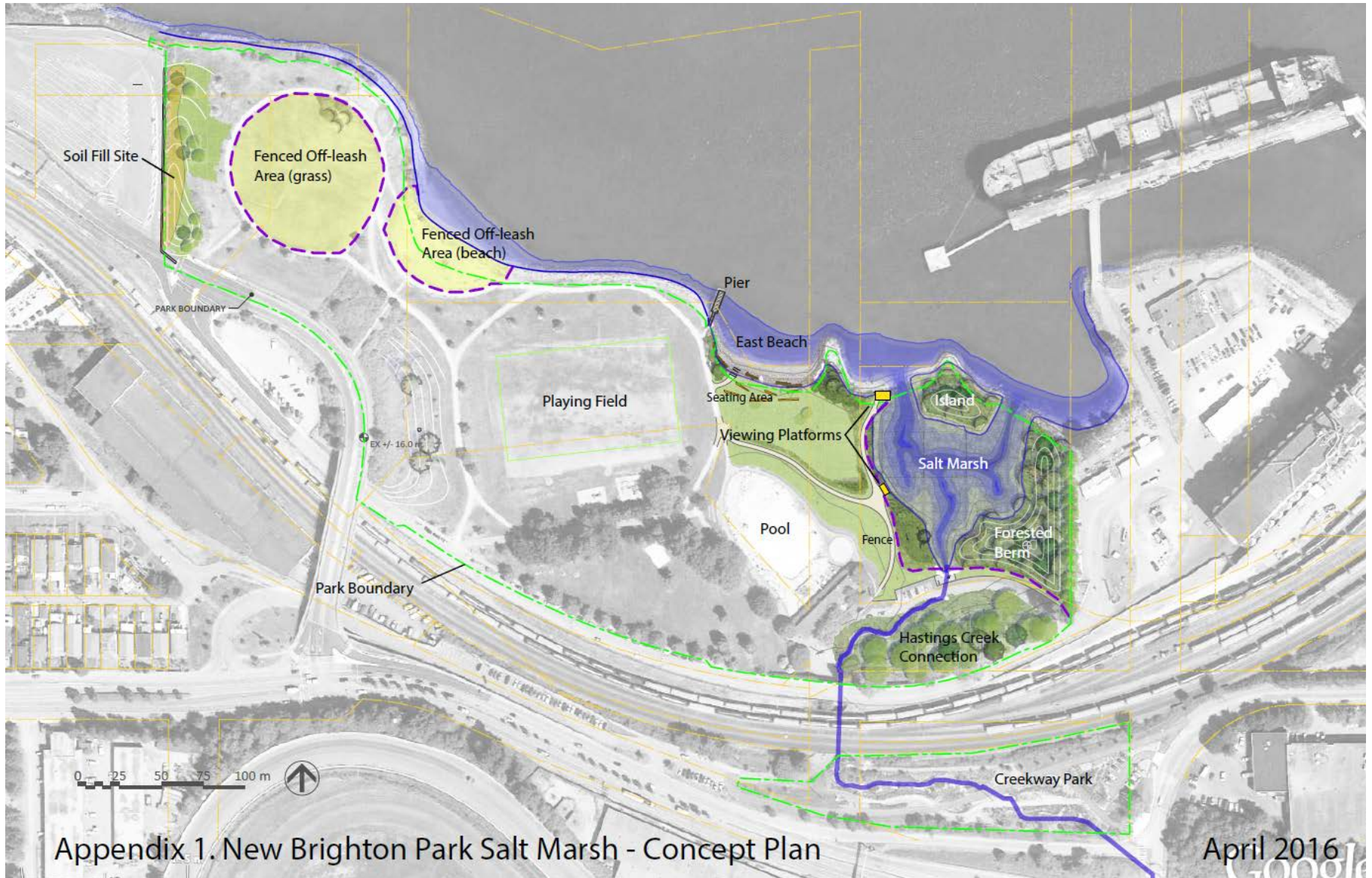
- Ecological assessment (2014-2015)
- Phase 1/Phase 2 soil and groundwater investigations (May/Sept 2015)
- Archaeological assessments/monitoring (May/Sept 2015)



PUBLIC AND STAKEHOLDER ENGAGEMENT TO DATE

- Ongoing Stakeholder Advisory Group engagement
- Three rounds of public engagement to date:
 - Conceptual Design Public Consultation (Aug 26 – Sept 9, 2015)
 - Preliminary Design Public Consultation (Nov 2 – 18, 2015)
 - Dog Off Leash Area Public Engagement (Feb 1 – 15, 2016)
- Input received so far indicates that participants preferred:
 - Salt marsh with island concept
 - Dog off-leash area on west side of New Brighton Park
- The project team will proceed to advance above noted designs

PROPOSED DESIGN



UPCOMING PUBLIC ENGAGEMENT OPPORTUNITIES

- **April 18, 2016:**
 - Vancouver Board of Parks and Recreation Regular Meeting
 - The project team will seek approval of preliminary design, associated park feature changes and project advancement
- **May 2 – 27, 2016:**
 - Detailed design public consultation
- **June – July, 2016:**
 - Consultation summary report
 - Consideration report
- **Fall, 2016:**
 - Construction communication activities

DETAILED DESIGN PUBLIC CONSULTATION

MAY 2–27, 2016

- Detailed design public consultation will include:
 - Discussion paper and feedback form & online feedback form
 - Public information session
- Notification will include:
 - Localized postcard mailer to 8,000 residences and businesses
 - Newspaper advertisement in the Georgia Strait
 - Emails to EVPL members, the Stakeholder Advisory Group and approximately 1,850 stakeholders
 - Signage at New Brighton Park
 - Social media: tweets from @portvancouver and @ParkBoard
 - Web updates: portvancouver.com and vancouver.ca/newbrightonsaltmarsh



PORT of
vancouver



Questions and comments

