

Columbia Container Ltd.
Projects
Port Metro Vancouver

April 2016

Columbia Containers Ltd. Projects

- 2 Storey Office Building
- Bight Infill
- Grain Transload Facility

2 Storey Office Building



PROJECT:
TWO STOREY OFFICE FOR COLUMBIA CONTAINERS
TOTAL FLOOR AREA: 5,760sf. (2,880 SF. PER FLOOR)

ADDRESS:
2319 COMMISSIONER STREET, VANCOUVER, BC.

LEGAL:
PCL 'A' VFPA PLAN 2011-250

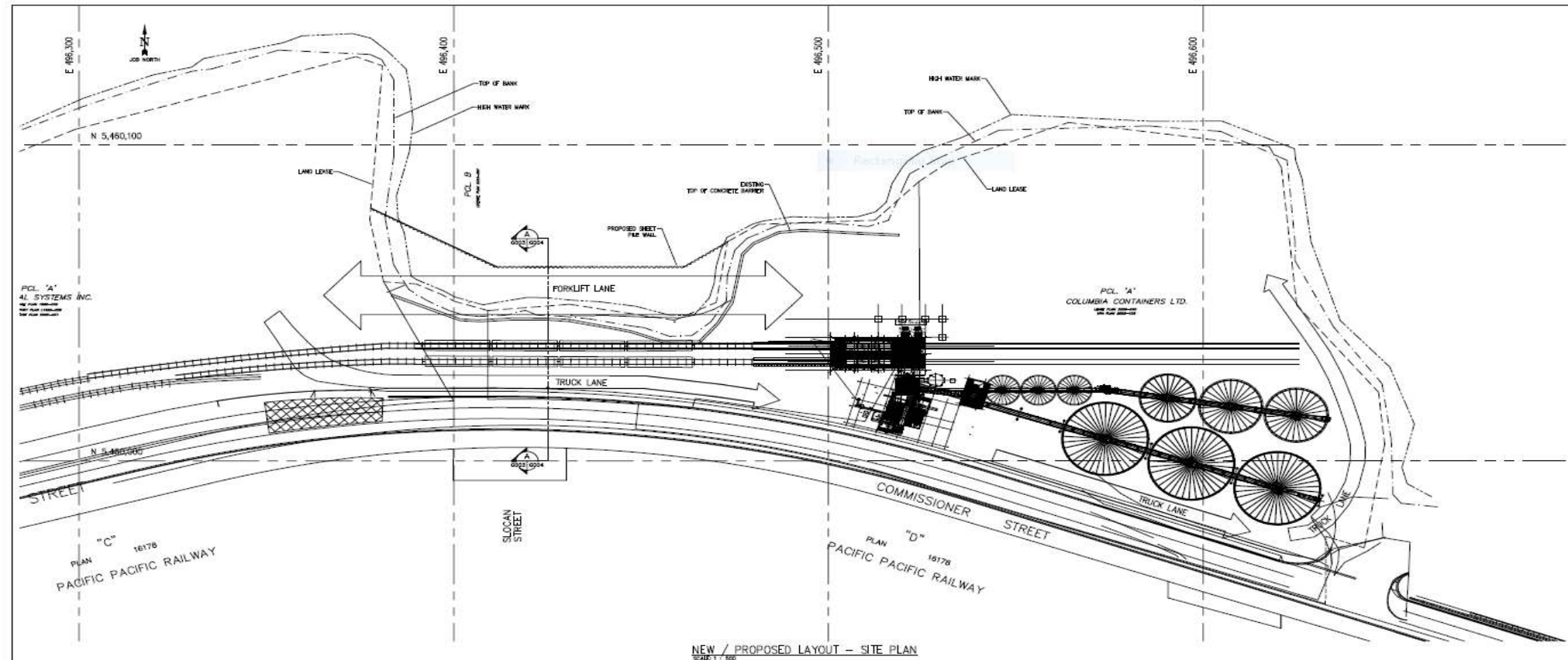


SUPPLY SPEC:
A1.0 COVER SHEET
A1.1 ARCHITECTURAL PLAN
A1.2 STRUCTURAL PLAN
A1.3 FINISHING
A1.4 PLUMBING
A1.5 ELECTRICAL
A2.1 FOUNDATION PLAN & DETAILS
A2.2 BUILDING SECTION & LOBBY SECTION
A2.3 SECTION DETAILS
A3.1 EXTERIOR ELEVATIONS
A3.2 INTERIOR ELEVATIONS & FINISHING
E1 ELECTRICAL PLAN
M1 HVAC PLAN
M2 PLUMBING PLAN

GENERAL NOTES:

1. THE DRAWINGS SET TO BE READ IN CONJUNCTION WITH SPECIFICATION FOR COMPLETE PROJECT REQUIREMENTS.
2. NO PLANS SHALL BE SCALED. DIMENSIONS SHALL BE USED.
3. ALL PLAN DIMENSIONS ARE PLACE ON CENTER LINE OF FINISHING.
4. ALL WINDOWS NOTED ON PLAN ARE FINISH OPENINGS.
5. ALL LABOUR HANDSHOULDS AND INSTALLATION MUST BE COMPLY WITH THE CODES, SET & REGULATIONS OF ALL APPLICABLE.
6. ANY DISCREPANCY WHICH EXISTS BETWEEN THE REQUIREMENTS OF DRAWINGS & SPECIFICATION SHALL BE IMMEDIATELY BRINGING TO THE ATTENTION OF THE DESIGNER IMMEDIATELY IN WRITING FOR RESOLUTION.
7. COORDINATE THE WORK WITH MECHANICAL, ELECTRICAL, PLUMBING, AND OTHERS FOR ALL NECESSARY OPENINGS AND PENETRATIONS THROUGH WALL, CEILING OR FLOOR.
8. PROVIDE ALL OF PENETRATIONS BETWEEN SECTIONS WHERE REQUIRED FOR CABINET, ACCESSORIES, THERMISTING ETC.
9. FIVE STOP ALL PENETRATIONS THROUGH RATED ASSEMBLIES.

Bight Project Site Plan



WORK IN PROGRESS
DRAWING
INCOMPLETE

PRELIMINARY
NOT FOR
CONSTRUCTION

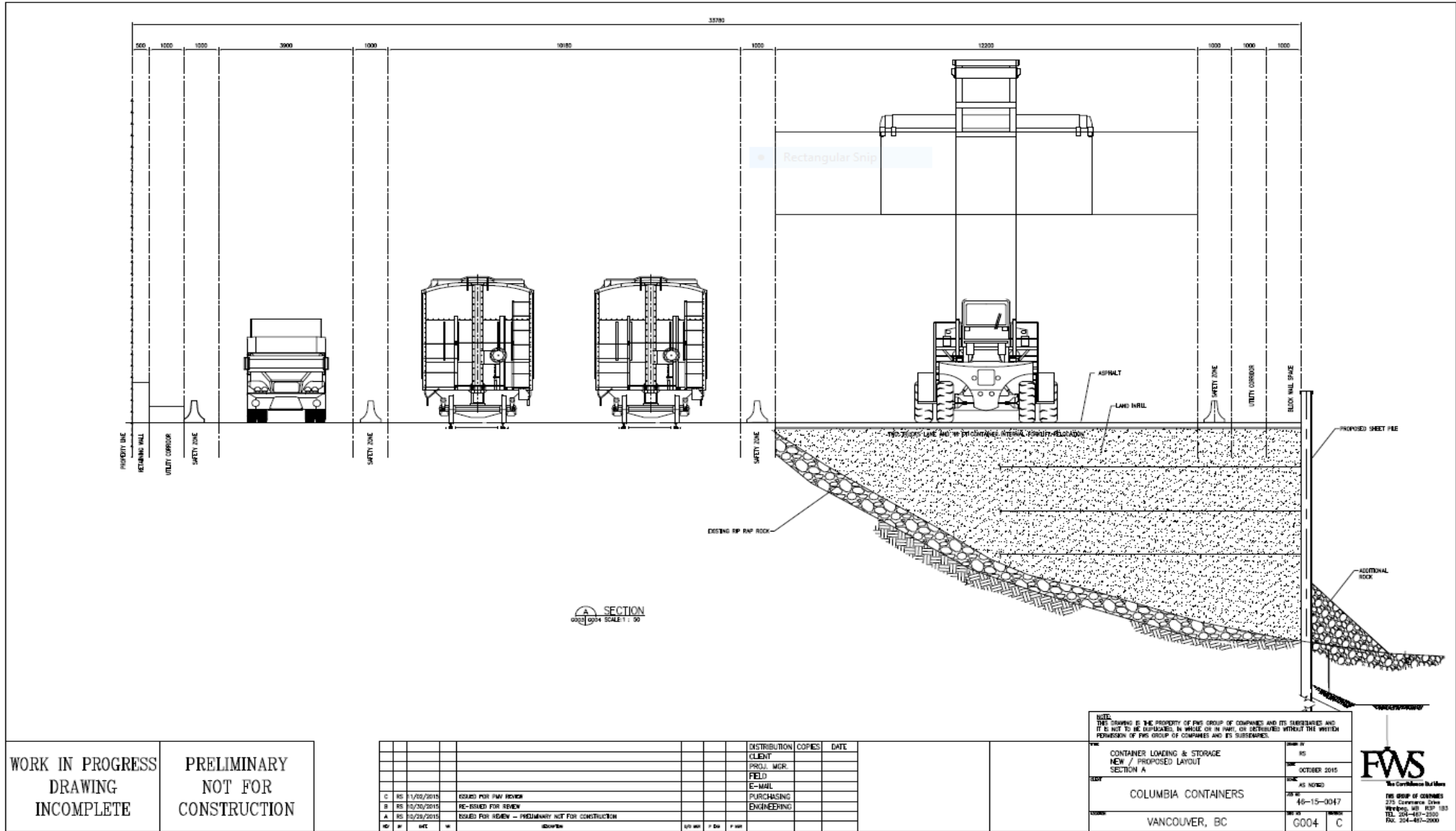
						DISTRIBUTION	COPIES	DATE
						CLIENT		
						PROJ. MGR.		
						FIELD		
						E-MAIL		
C	RS	7/10/2016	ISSUED FOR PM REVIEW			PURCHASING		
B	RS	10/30/2016	RE-BIDDED FOR REVIEW			ENGINEERING		
A	RS	10/29/2016	ISSUED FOR REVIEW - PRELIMINARY NOT FOR CONSTRUCTION					
A	RS	INT.	APPROVAL					

<p>NOTE: THIS DRAWING IS THE PROPERTY OF THIS GROUP OF COMPANIES AND ITS SUBSIDIARIES AND IT IS NOT TO BE REPRODUCED, IN WHOLE OR IN PART, OR DISTRIBUTED WITHOUT THE WRITTEN PERMISSION OF THIS GROUP OF COMPANIES AND ITS SUBSIDIARIES.</p>	
<p>TYPE</p> <p>CONTAINER LOADING & STORAGE SITE PLAN NEW / PROPOSED LAYOUT</p>	<p>GROUP NO.</p> <p>85</p> <p>DATE</p> <p>OCTOBER 2015</p>
<p>CLIENT</p> <p>COLUMBIA CONTAINERS</p>	<p>PHONE</p> <p>46-15-0047</p>
<p>LOCATION</p> <p>VANCOUVER, BC</p>	<p>UNIT NO.</p> <p>G003</p>

FWS
The Confidence That Matters

THE GROUP OF COMPANIES
275 Commerce Drive
Wilmington, MA 01897
TEL. 204-487-2500
FAX. 204-487-2900

Bight Project Section



Architectural rendering of the Columbia Containers facility, showing large storage tanks, a loading dock, and a conveyor system, viewed from the north.

LOOKING NORTH
SCALE 1/8" = 1'-0"

WORK IN PROGRESS
DRAWING
INCOMPLETE

PRELIMINARY
NOT FOR
CONSTRUCTION

NO.	DATE	DESCRIPTION	BY	CHECKED	DATE
1	01/11/2011	ISSUED FOR APPROVAL	JM		
2	02/02/2011	UPDATED REFINED LAYOUT	JM		
3	01/28/2011	ISSUED FOR REVIEW	JM		

NO.	DATE	DESCRIPTION	BY	CHECKED	DATE
1	01/11/2011	ISSUED FOR APPROVAL	JM		
2	02/02/2011	UPDATED REFINED LAYOUT	JM		
3	01/28/2011	ISSUED FOR REVIEW	JM		

NO.	DATE	DESCRIPTION	BY	CHECKED	DATE
1	01/11/2011	ISSUED FOR APPROVAL	JM		
2	02/02/2011	UPDATED REFINED LAYOUT	JM		
3	01/28/2011	ISSUED FOR REVIEW	JM		

NO.	DATE	DESCRIPTION	BY	CHECKED	DATE
1	01/11/2011	ISSUED FOR APPROVAL	JM		
2	02/02/2011	UPDATED REFINED LAYOUT	JM		
3	01/28/2011	ISSUED FOR REVIEW	JM		

NO.	DATE	DESCRIPTION	BY	CHECKED	DATE
1	01/11/2011	ISSUED FOR APPROVAL	JM		
2	02/02/2011	UPDATED REFINED LAYOUT	JM		
3	01/28/2011	ISSUED FOR REVIEW	JM		

NO.	DATE	DESCRIPTION	BY	CHECKED	DATE
1	01/11/2011	ISSUED FOR APPROVAL	JM		
2	02/02/2011	UPDATED REFINED LAYOUT	JM		
3	01/28/2011	ISSUED FOR REVIEW	JM		

NO.	DATE	DESCRIPTION	BY	CHECKED	DATE
1	01/11/2011	ISSUED FOR APPROVAL	JM		
2	02/02/2011	UPDATED REFINED LAYOUT	JM		
3	01/28/2011	ISSUED FOR REVIEW	JM		

NO.	DATE	DESCRIPTION	BY	CHECKED	DATE
1	01/11/2011	ISSUED FOR APPROVAL	JM		
2	02/02/2011	UPDATED REFINED LAYOUT	JM		
3	01/28/2011	ISSUED FOR REVIEW	JM		

NO.	DATE	DESCRIPTION	BY	CHECKED	DATE
1	01/11/2011	ISSUED FOR APPROVAL	JM		
2	02/02/2011	UPDATED REFINED LAYOUT	JM		
3	01/28/2011	ISSUED FOR REVIEW	JM		

NO.	DATE	DESCRIPTION	BY	CHECKED	DATE
1	01/11/2011	ISSUED FOR APPROVAL	JM		
2	02/02/2011	UPDATED REFINED LAYOUT	JM		
3	01/28/2011	ISSUED FOR REVIEW	JM		

NO.	DATE	DESCRIPTION	BY	CHECKED	DATE
1	01/11/2011	ISSUED FOR APPROVAL	JM		
2	02/02/2011	UPDATED REFINED LAYOUT	JM		
3	01/28/2011	ISSUED FOR REVIEW	JM		

NO.	DATE	DESCRIPTION	BY	CHECKED	DATE
1	01/11/2011	ISSUED FOR APPROVAL	JM		
2	02/02/2011	UPDATED REFINED LAYOUT	JM		
3	01/28/2011	ISSUED FOR REVIEW	JM		

NO.	DATE	DESCRIPTION	BY	CHECKED	DATE
1	01/11/2011	ISSUED FOR APPROVAL	JM		
2	02/02/2011	UPDATED REFINED LAYOUT	JM		
3	01/28/2011	ISSUED FOR REVIEW	JM		

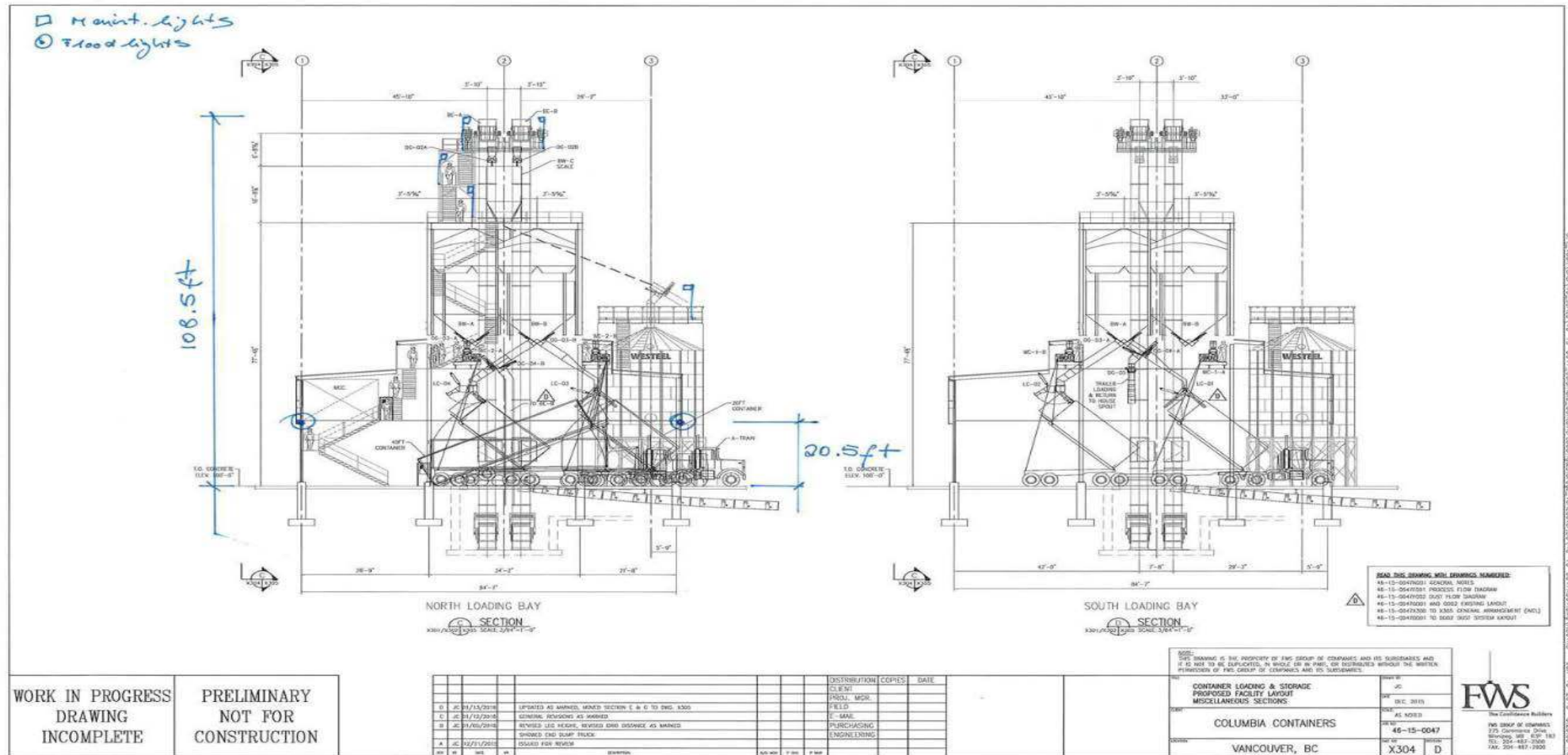
NO.	DATE	DESCRIPTION	BY	CHECKED	DATE
1	01/11/2011	ISSUED FOR APPROVAL	JM		
2	02/02/2011	UPDATED REFINED LAYOUT	JM		
3	01/28/2011	ISSUED FOR REVIEW	JM		

NO.	DATE	DESCRIPTION	BY	CHECKED	DATE
1	01/11/2011	ISSUED FOR APPROVAL	JM		
2	02/02/2011	UPDATED REFINED LAYOUT	JM		
3	01/28/2011	ISSUED FOR REVIEW	JM		

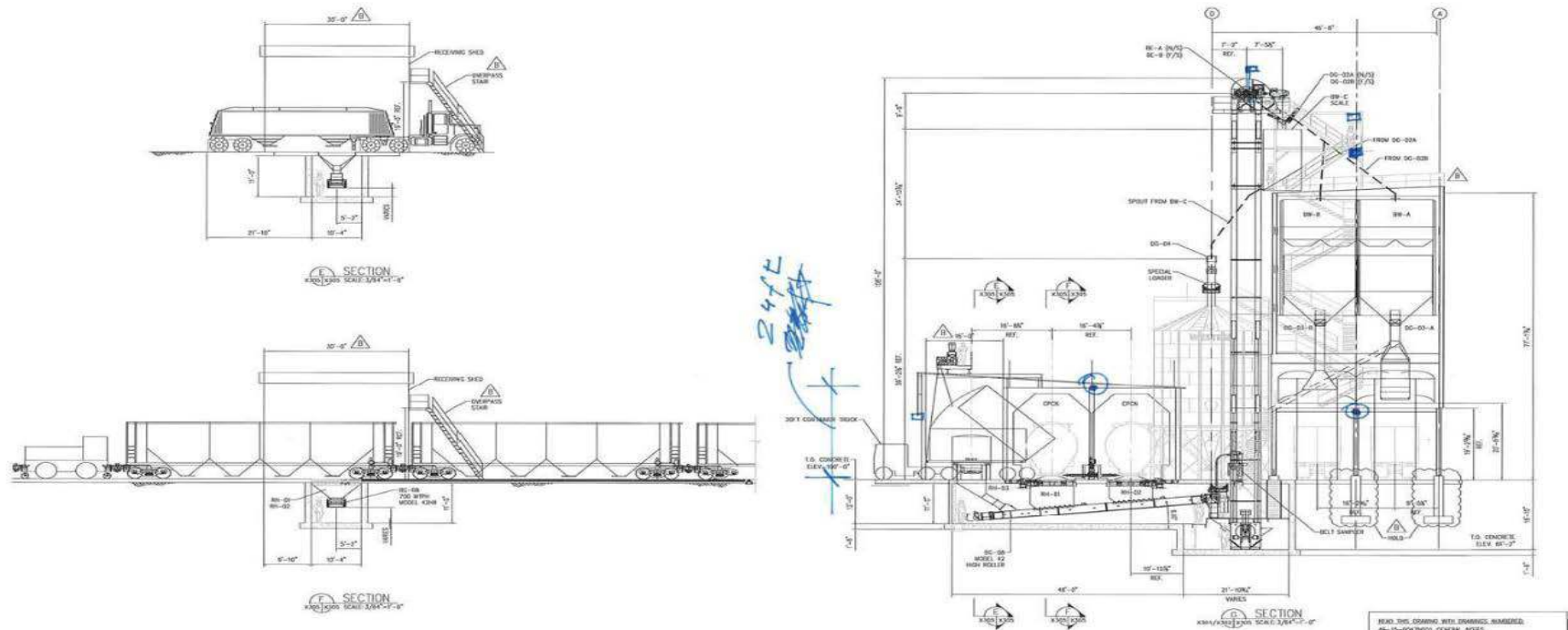
NO.	DATE	DESCRIPTION	BY	CHECKED	DATE
1	01/11/2011	ISSUED FOR APPROVAL	JM		
2	02/02/2011	UPDATED REFINED LAYOUT	JM		
3	01/28/2011	ISSUED FOR REVIEW	JM		

[illegible]

Detail Design



Detail Design



WORK IN PROGRESS
DRAWING
INCOMPLETE

PRELIMINARY
NOT FOR
CONSTRUCTION

		(DISTRIBUTION) COPIES		DATE
1	REV. 01/26/2016	1	PROJ. MGR.	
2	REV. 01/26/2016	1	FIELD	
3	REV. 01/26/2016	1	E-MAIL	
4	REV. 01/26/2016	1	PURCHASING	
5	REV. 01/26/2016	1	ENGINEERING	
6	REV. 01/26/2016	1	ISSUED FOR REVIEW	
7	REV. 01/26/2016	1	REVISION	
8	REV. 01/26/2016	1	REV. 01/26/2016	
9	REV. 01/26/2016	1	REV. 01/26/2016	
10	REV. 01/26/2016	1	REV. 01/26/2016	

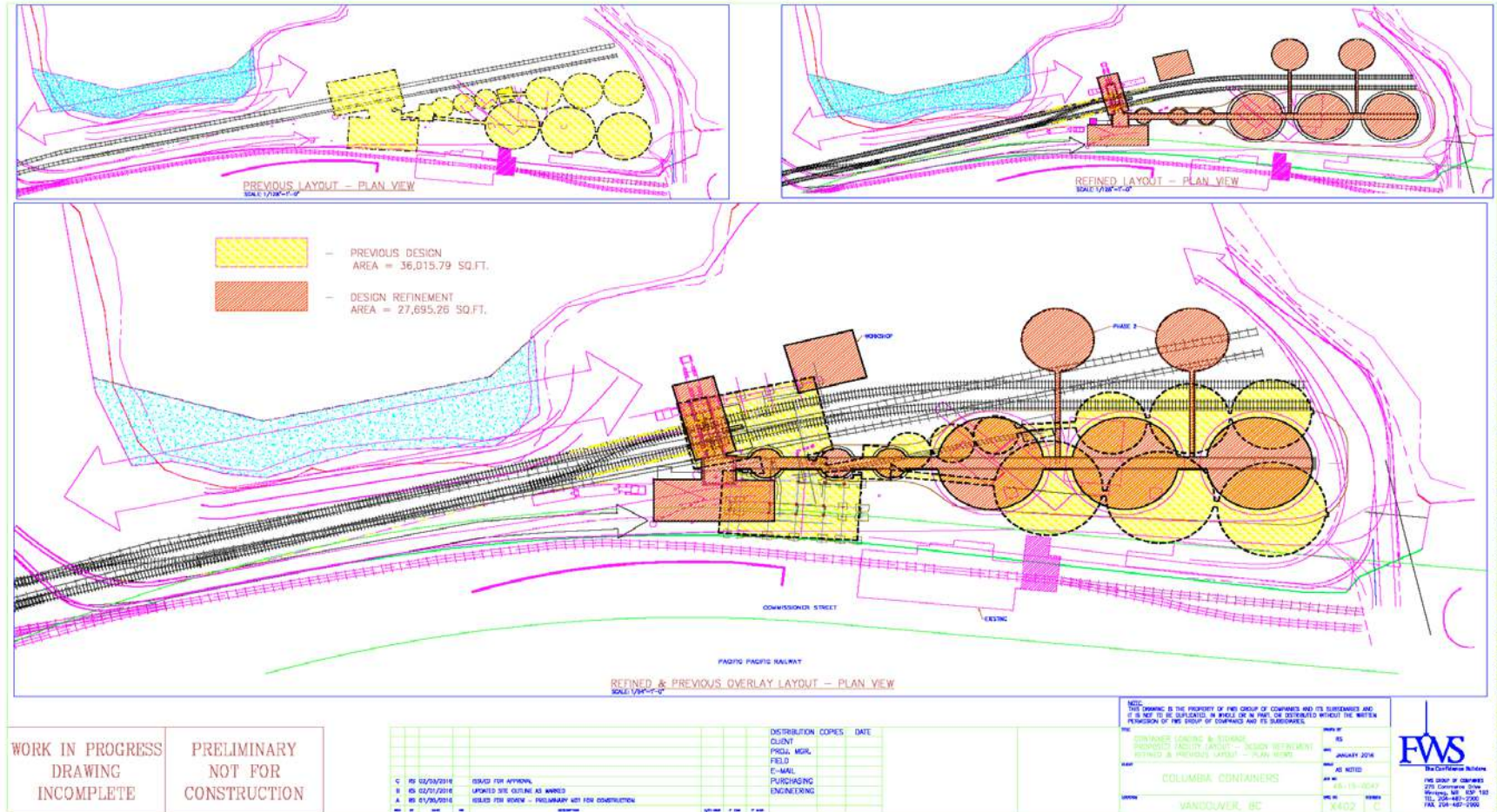
NOTE: THIS DRAWING IS THE PROPERTY OF FWS GROUP OF COMPANIES AND ITS SUBSIDIARIES AND IT IS NOT TO BE REPRODUCED, IN WHOLE OR IN PART, OR DISTRIBUTED WITHOUT THE WRITTEN PERMISSION OF FWS GROUP OF COMPANIES AND ITS SUBSIDIARIES.	
CONTAINER LOADING & STORAGE PROPOSED FACILITY LAYOUT MISCELLANEOUS SECTIONS	REV. 01/26/2016
COLUMBIA CONTAINERS	REV. 01/26/2016
VANCOUVER, BC	REV. 01/26/2016
X305	B

FWS
THE CONTAINER BUSINESS
275 Commerce Centre
Vancouver, BC V6B 1G1
TEL: 604-481-3900
FAX: 604-481-3900

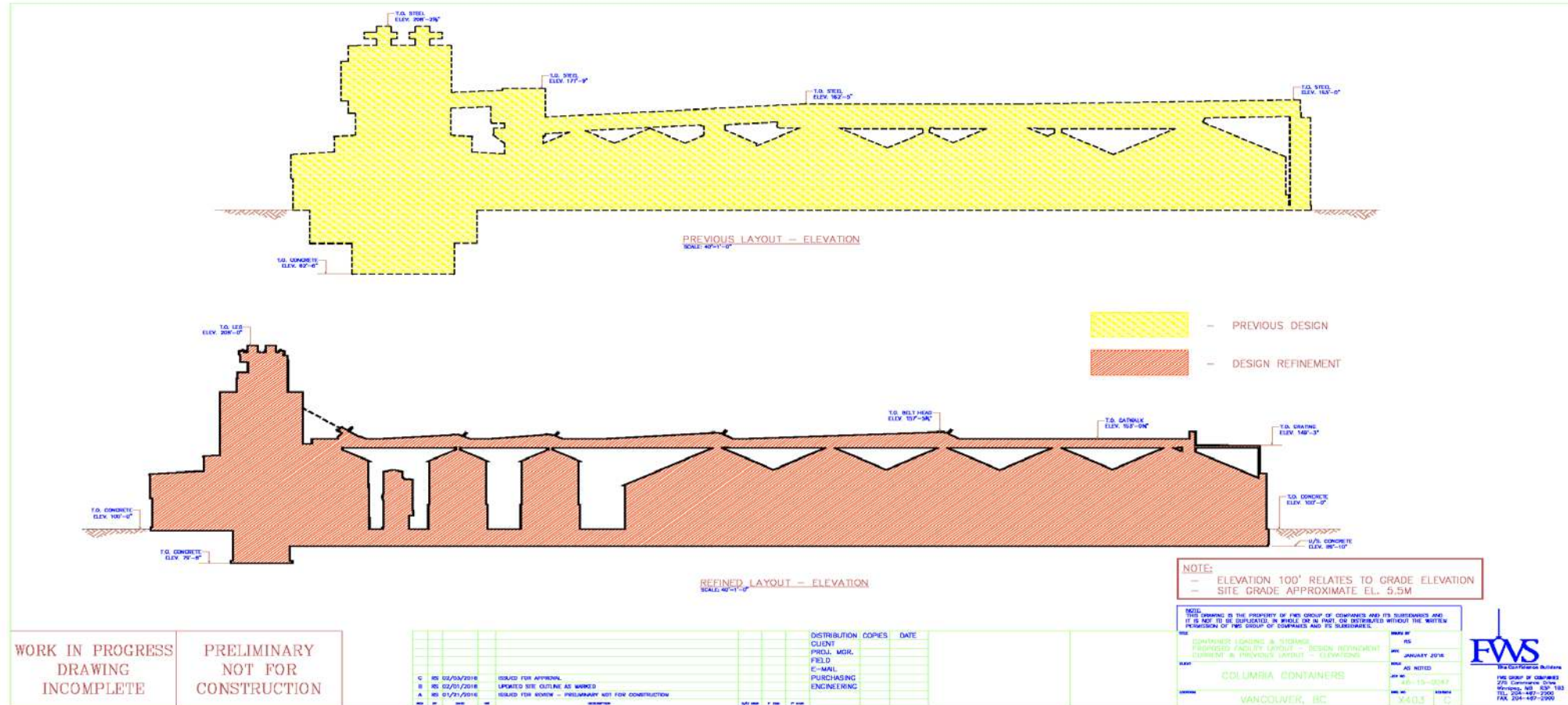
Design Refinements



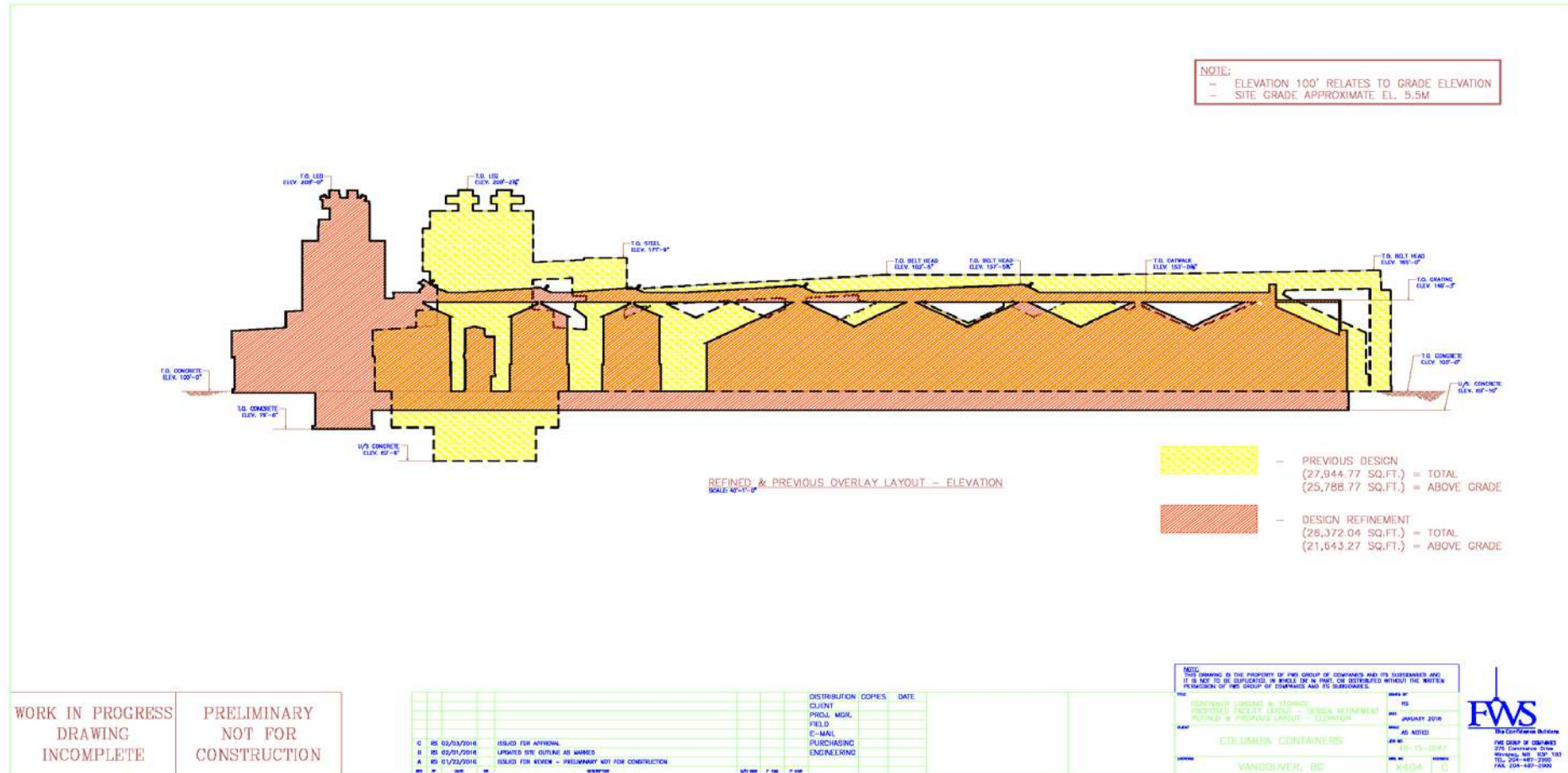
Plans and Perspectives



Elevation Change



Elevation Overlay



Landscape Improvement

