

Columbia Container Ltd.  
Partial Bight Infill  
Port Metro Vancouver

December 2015

# Columbia Containers Ltd. - Partial Bight Infill

- Project Location
- Use of the Bight Corridor
- Description of existing conditions
- Expansion plans and impact on Columbia Operations
- Project Studies Undertaken
- Description of proposed Project

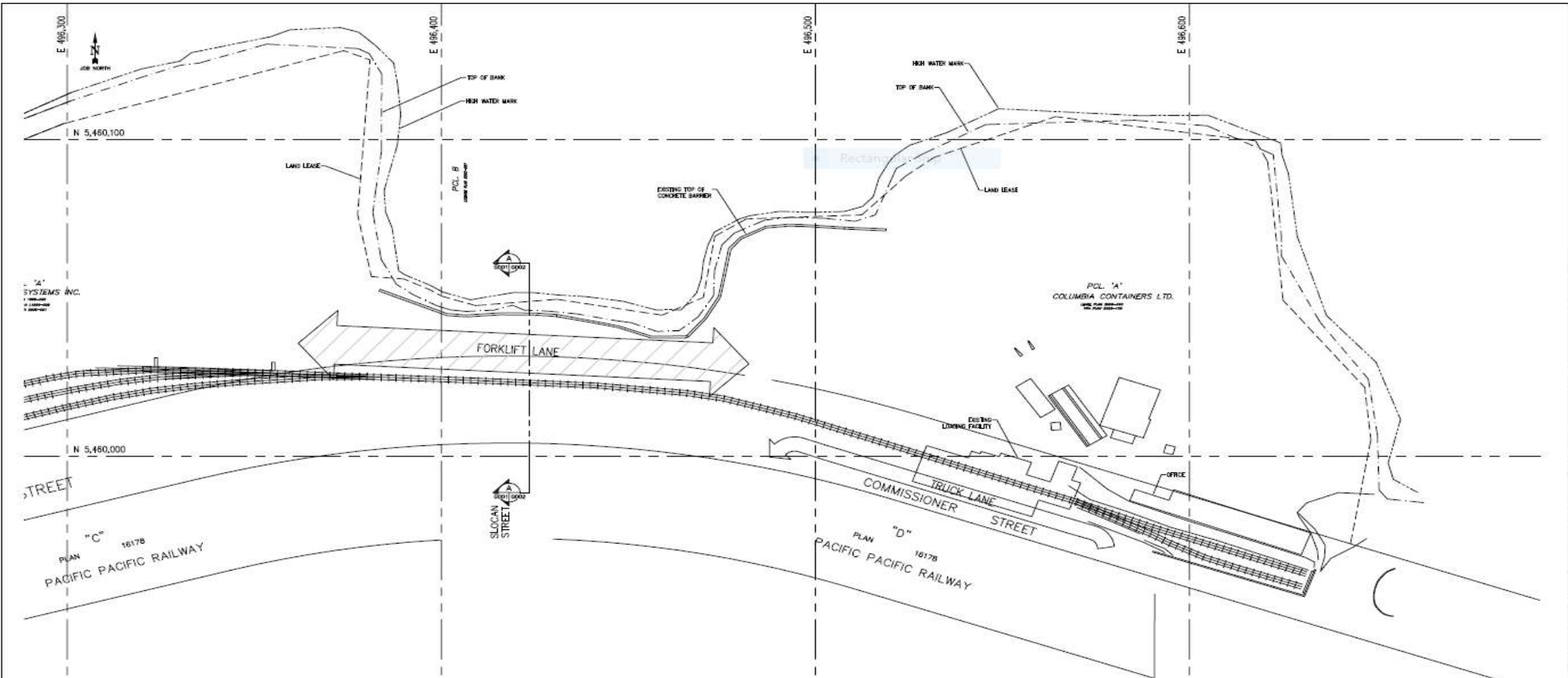


Bight Infill Project Location

# Use of the Bight Corridor

- High traffic area
- Links the west storage area to the active container loading operations area to the east, currently utilizing Commissioner Street.
- Used for moving rail cars in for unloading, for Semi-truck traffic moving containers, for forklifts moving containers from side to side, and for general access of workers and vehicles.
- Containers routinely moved are usually 20 or 40 feet in length.

# Bight Existing Site Plan



PLAN VIEW - EXISTING LAYOUT  
SCALE 1:500

WORK IN PROGRESS  
DRAWING  
INCOMPLETE

PRELIMINARY  
NOT FOR  
CONSTRUCTION

NO.	REV.	DATE	DESCRIPTION	DISTRIBUTION	COPIES	DATE
C	RS	11/23/2015	ISSUED FOR PAV REVIEW			
B	RS	10/26/2015	RE-ISSUED FOR REVIEW			
A	RS	10/24/2015	ISSUED FOR REVIEW - PRELIMINARY NOT FOR CONSTRUCTION			

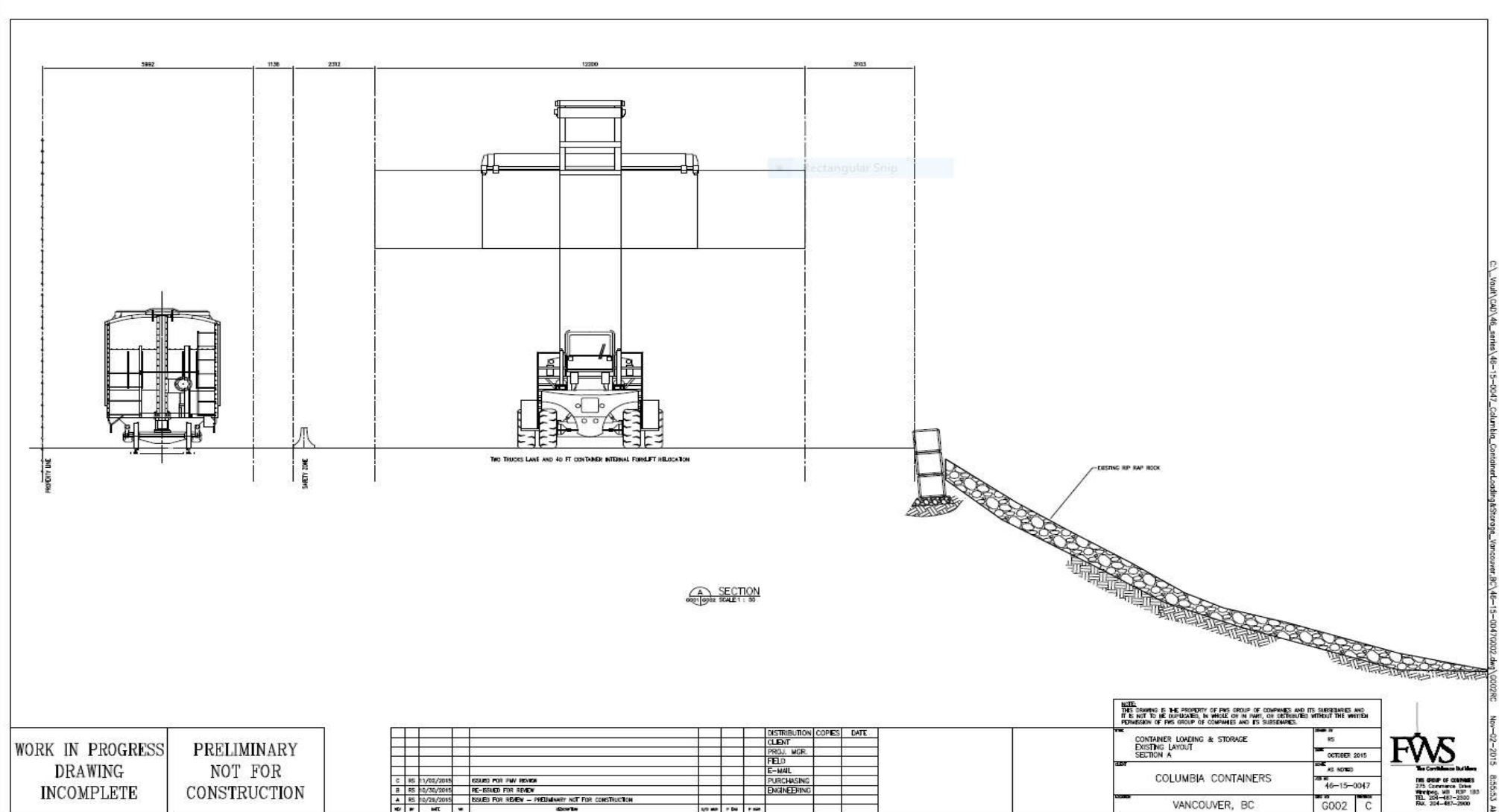
<small>NOTE:</small> THIS DRAWING IS THE PROPERTY OF FWS GROUP OF COMPANIES AND ITS SUBSIDIARIES AND IT IS NOT TO BE REPRODUCED, IN WHOLE OR IN PART, OR DISTRIBUTED WITHOUT THE WRITTEN PERMISSION OF FWS GROUP OF COMPANIES AND ITS SUBSIDIARIES.	
CONTAINER LOADING & STORAGE EXISTING SITE LAYOUT	DATE OF ISSUE OCTOBER 2015
COLUMBIA CONTAINERS	AS NOTED DRAWING NO. 45-13-0047
VANCOUVER, BC	SHEET NO. G001 OF C

**FWS**  
The Container Hub

FWS GROUP OF COMPANIES  
375 Commerce Square  
Vancouver, BC V6C 3K3, CAN  
TEL: 604-667-2500  
FAX: 604-667-2600

C:\Work\CAD\45-13-0047 Columbia Container Loading Storage Vancouver BC\45-13-0047\0001.dwg (2015) Rev: 02-2015 9:15:48 AM

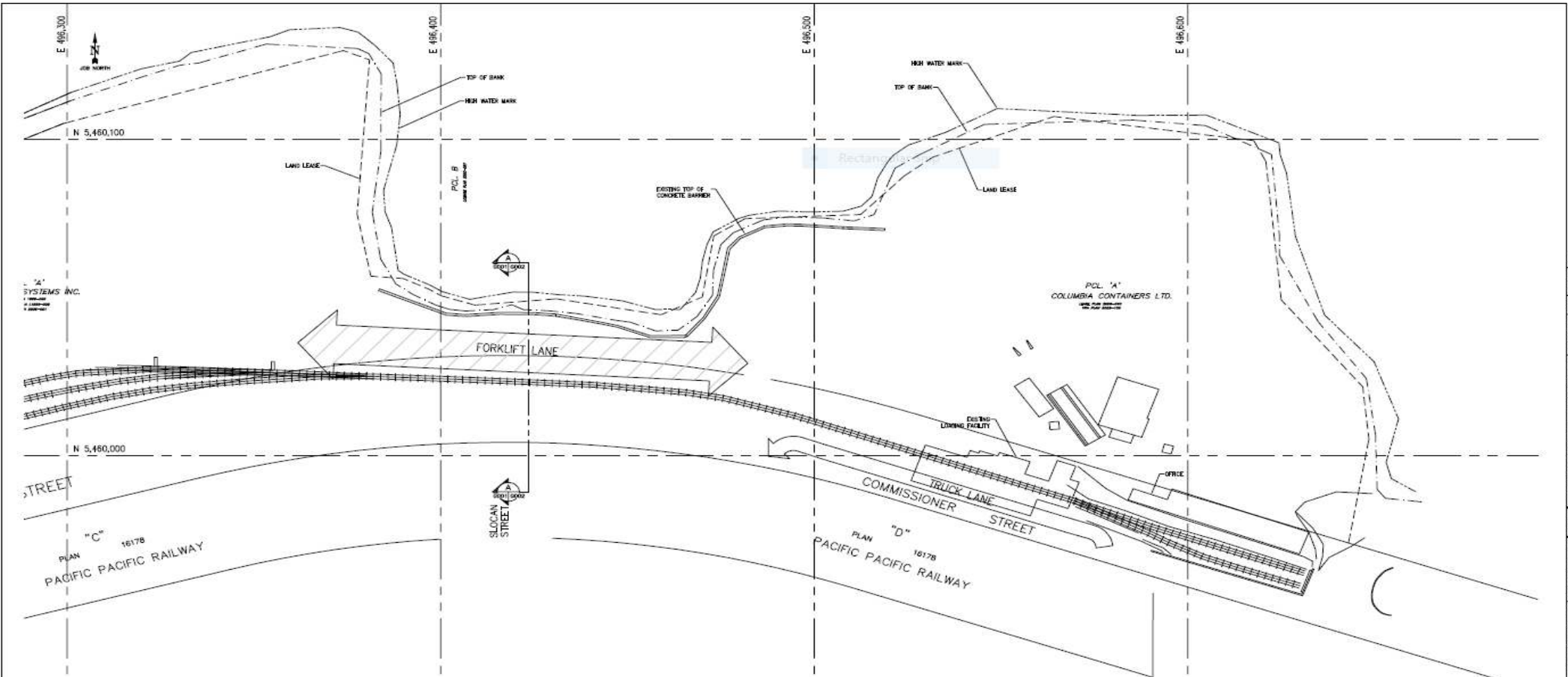
# Bight Existing Section



# Expansion Plans and Impact

- Rail expansion of tracks South of Commissioner Street
- Realignment of Commissioner Street to the North.
- Demolition of Columbia Existing Grain Elevator
- Decommissioning of Columbia's Access and Egress to Grain Elevator
- Safety Improvements for all Traffic Flow on Commissioner Street
- Designation of Columbia new Internal Truck Paths
- Expansion of Columbia Rail Requirements
- Reestablish Safe Operating Corridor for Columbia

# Bight Existing Site Plan



PLAN VIEW - EXISTING LAYOUT  
SCALE: 1:500

WORK IN PROGRESS  
DRAWING  
INCOMPLETE

PRELIMINARY  
NOT FOR  
CONSTRUCTION

					DISTRIBUTION	COPIES	DATE
					CLIENT		
					PROJ. MGR.		
					FIELD		
					E-MAIL		
					PURCHASING		
					ENGINEERING		
C	RS	11/23/2015	ISSUED FOR PMV REVIEW				
B	RS	10/20/2015	RE-ISSUED FOR REVIEW				
A	RS	10/24/2015	ISSUED FOR REVIEW - PRELIMINARY NOT FOR CONSTRUCTION				

NOTE:  
THIS DRAWING IS THE PROPERTY OF FWS GROUP OF COMPANIES AND ITS SUBSIDIARIES AND  
IT IS NOT TO BE REPRODUCED, IN WHOLE OR IN PART, OR DISTRIBUTED WITHOUT THE WRITTEN  
CONSENT OF FWS GROUP OF COMPANIES AND ITS SUBSIDIARIES.

PROJECT	CONTAINER LOADING & STORAGE EXISTING SITE LAYOUT	DATE	RS OCTOBER 2015
CLIENT	COLUMBIA CONTAINERS	SCALE	AS NOTED
LOCATION	VANCOUVER, BC	DWG NO.	45-13-0047
		REV. NO.	0000
		DATE	

The Container Hub  
FWS GROUP OF COMPANIES  
375 Commerce Square  
Vancouver, BC V6B 3S3  
TEL: 604-667-2500  
FAX: 604-667-2600

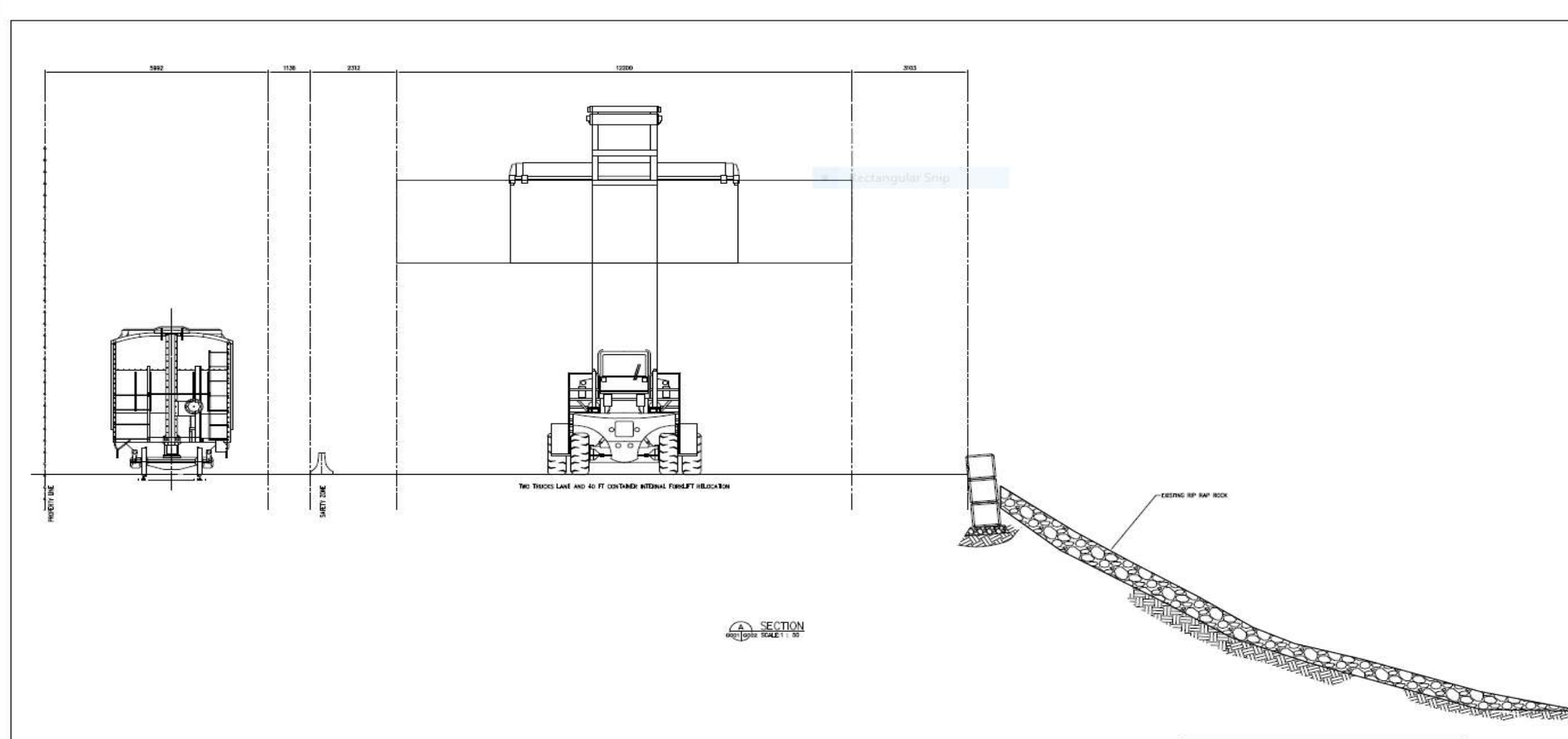
C:\Work\CAD\45-13-0047 Columbia Container Loading Storage Vancouver BC\45-13-00470001.dwg (2015) Rev: 02-2015 9:15:48 AM



# Project Studies Undertaken

- Internal Review of Operations
- Independent Environmental Impact Study by Pottinger Gaherity
- Formal Review by the Department of Fisheries and Oceans

# Bight Existing Section



SECTION  
SCALE: 1" = 30'

WORK IN PROGRESS  
DRAWING  
INCOMPLETE

PRELIMINARY  
NOT FOR  
CONSTRUCTION

NO.	DATE	DESCRIPTION	BY	CHKD.	APP'D.	DATE
C	11/02/2014	ISSUED FOR PMV REVIEW				
B	10/26/2014	RE-ISSUED FOR REVIEW				
A	10/24/2014	ISSUED FOR REVIEW - PRELIMINARY NOT FOR CONSTRUCTION				

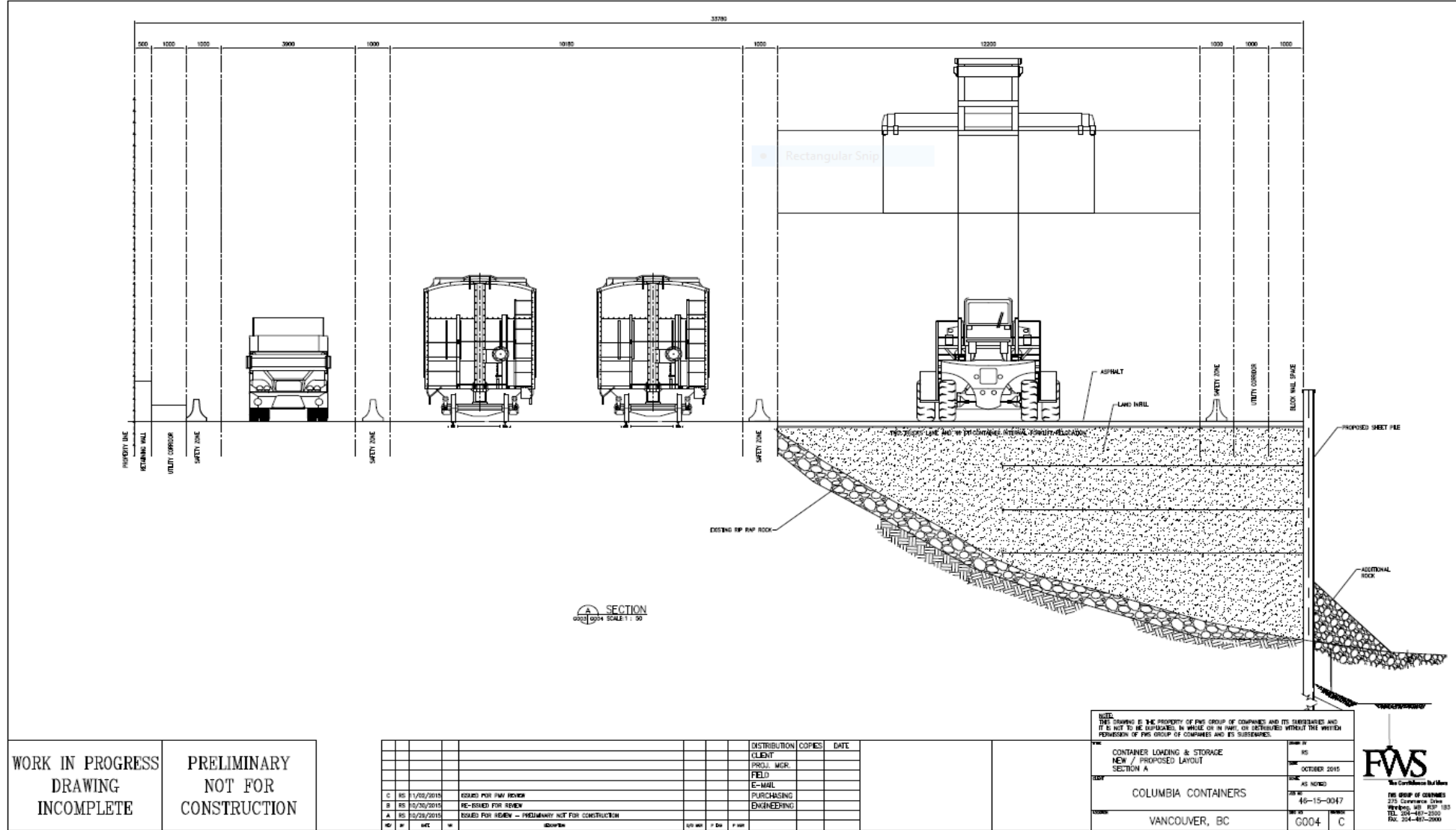
DISTRIBUTION	COPIES	DATE
CLIENT		
PROJ. MGR.		
FIELD		
E-MAIL		
PURCHASING		
ENGINEERING		

<small>NOTE:</small> THIS DRAWING IS THE PROPERTY OF FWS GROUP OF COMPANIES AND ITS SUBSIDIARIES AND IT IS NOT TO BE REPRODUCED IN WHOLE OR IN PART, OR DETACHED FROM THE WHOLE WITHOUT THE WRITTEN PERMISSION OF FWS GROUP OF COMPANIES AND ITS SUBSIDIARIES.	
CONTAINER LOADING & STORAGE EXISTING LAYOUT SECTION A	DATE: OCTOBER 2010 SHEET NO: 45 (OF 60)
COLUMBIA CONTAINERS	DRAWING NO: 46-15-0047 PROJECT NO: 46-15-0000 REV: 001
VANCOUVER, BC	G002 C



C:\Work\2010\10-2010\10-2010\Columbia Container\Drawings\Van\46-15-0047\0002.dwg (0002) 10-27-2010 09:55:33 AM

# Bight Proposed Section

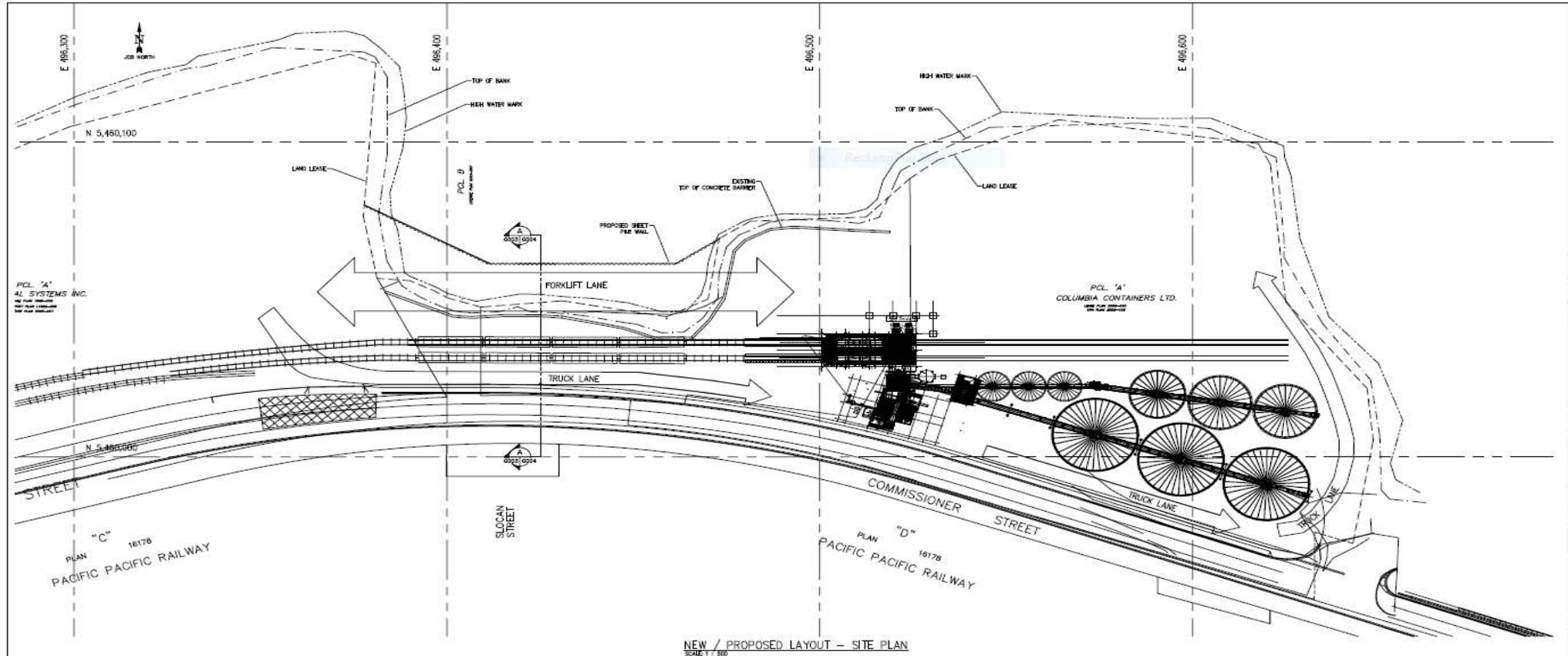


C:\Users\jv001\OneDrive\Documents\Projects\Columbia\_ContainerLoadingStorage\_Vancouver\BCT\46-15-0047\0004.dwg (30/10/2015) No-07-2015 836601.dwg

WORK IN PROGRESS  
DRAWING  
INCOMPLETE

PRELIMINARY  
NOT FOR  
CONSTRUCTION

# Bight Proposed Site Plan



NEW / PROPOSED LAYOUT - SITE PLAN  
SCALE: 1:500

WORK IN PROGRESS  
DRAWING  
INCOMPLETE

PRELIMINARY  
NOT FOR  
CONSTRUCTION

				DISTRIBUTION	COPIES	DATE
				CLIENT		
				PROJ. MGR.		
				FIELD		
				E-MAIL		
				PURCHASING		
				ENGINEERING		
C	RS	11/02/2015	ISSUED FOR PM REVIEW			
B	RS	05/20/2015	RE-ISSUED FOR REVIEW			
A	RS	03/25/2015	ISSUED FOR REVIEW - PRELIMINARY NOT FOR CONSTRUCTION			
REV	BY	DATE	DESCRIPTION			

NOTE:	
THIS DRAWING IS THE PROPERTY OF THIS GROUP OF COMPANIES AND ITS SUBSIDIARIES AND IT IS NOT TO BE REPRODUCED, IN WHOLE OR IN PART, OR DISTRIBUTED WITHOUT THE WRITTEN PERMISSION OF THIS GROUP OF COMPANIES AND ITS SUBSIDIARIES.	
CONTAINER LOADING & STORAGE SITE PLAN NEW / PROPOSED LAYOUT	REV OCTOBER 2015
COLUMBIA CONTAINERS	AS NOTED 45-15-0047
VANCOUVER, BC	REVISED G003 C

**FWS**  
FWS GROUP OF COMPANIES  
275 Commercial Drive  
Vancouver, BC V6C 3K3  
TEL: 604-451-2500  
FAX: 604-457-2000