



PORT of
vancouver

Deltaport Truck Staging Project

Port Community Liaison Committee

November 17, 2016

Liisa Hein, Infrastructure Delivery

Purpose

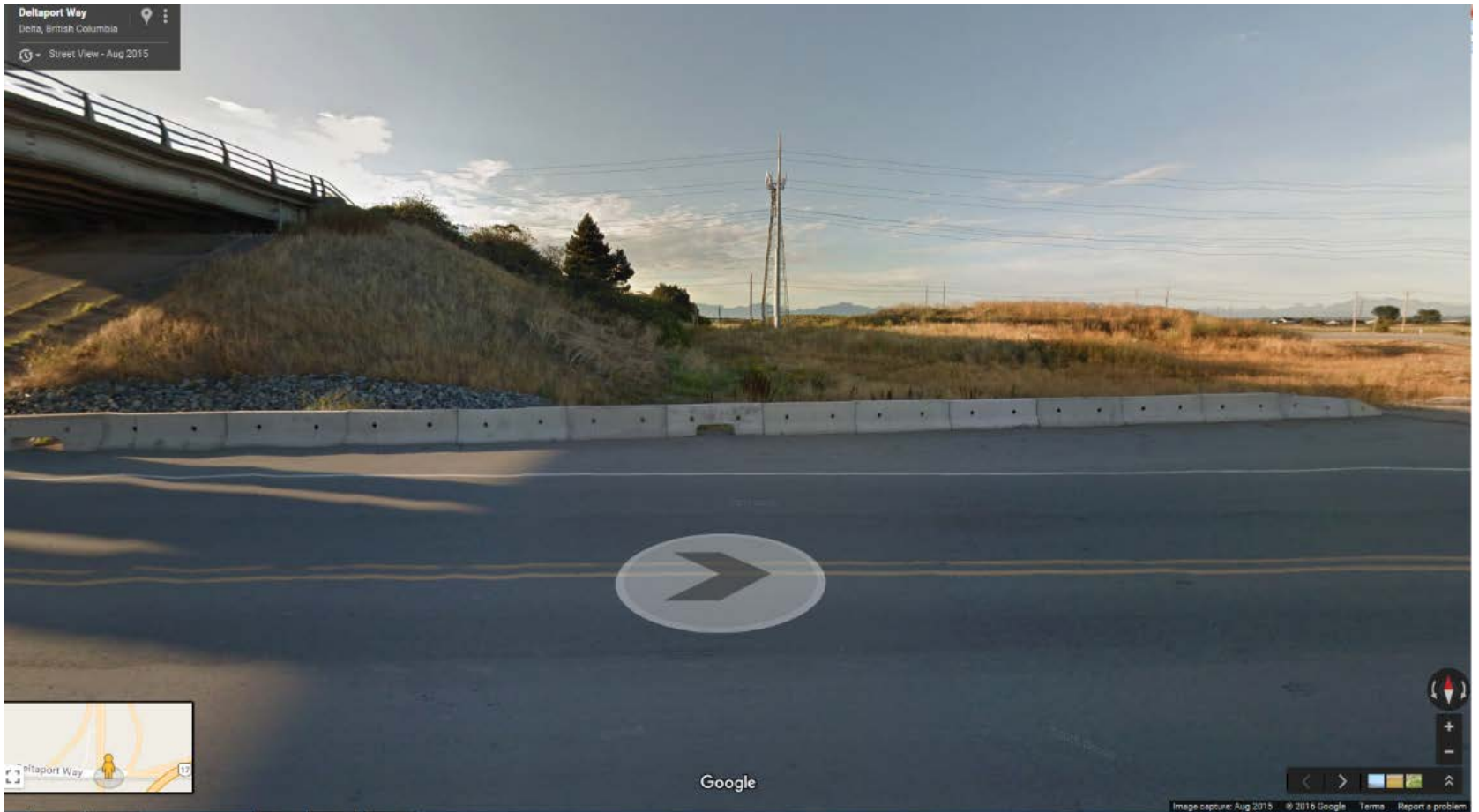
- Address safety concerns about Deltaport Terminal destined trucks *parked on the side of the highway* by providing a safe space for them in the following cases
 - Arriving earlier than appointment time
 - Terminal shutdown, or operational challenges
- Alleviate port traffic congestion

Overview



- Storage capacity is to be a minimum of 140 trucks
- Three controlled entrance gates to ensure no backlog at loop
- Washroom Facility - prefab
- Site monitored via CCTV camera from Port Operations Centre
- Digital Message Sign on Highway 17 (SFPR)
- Optimization of technology to provide real time traffic diversion

Location



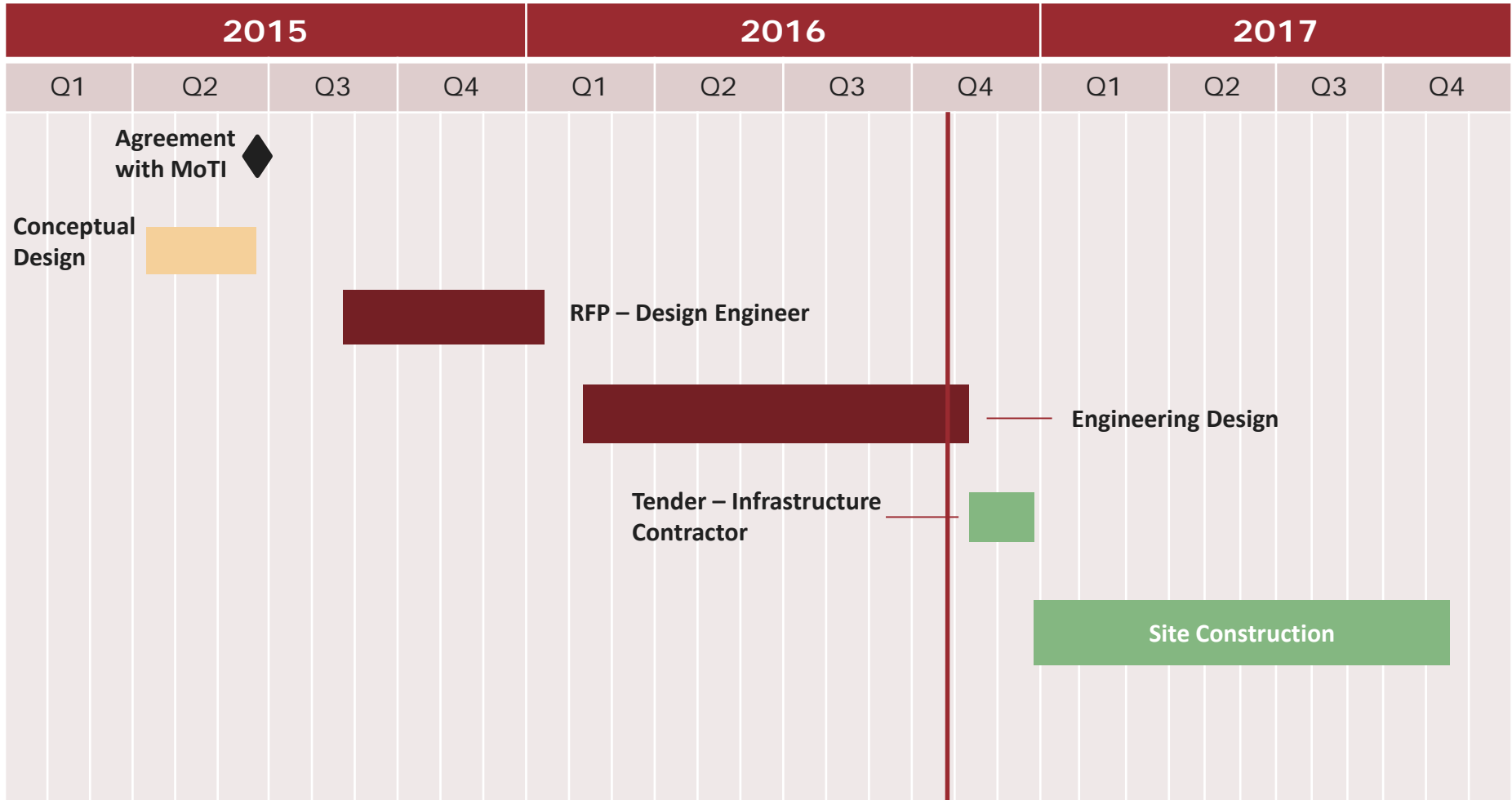
Considerations

- Optimizing use of existing land
- Safety and emergency response
- Security and lighting
- Cycling network
- Landscaping

Benefits

- Reduces CO₂ emissions
- Enhances safety for container truck drivers
- Enhances safety of the public along Deltaport Way
- Reducing queuing

Schedule



QUESTIONS

