



PORT METRO
vancouver

EAST VANCOUVER PORT LANDS COMMITTEE

June 19, 2014

Agenda

- South Shore Corridor Project
 - Traffic Control - Commissioner Street Staging Area
- Centerm Expansion Project
- Columbia Containers Updates:
 - Replacement Transloading Facility & Storage
 - Sheet Pile Retaining Wall Realignment
 - Installation of Modular Office
 - New Main Office Installation
- Saltworks Technologies – Temporary Storage Location
- Port Metro Vancouver Foreshore Stabilization Work at Columbia Containers

2901 Commissioner Street Staging Area

–Traffic Control Options

- Safety issues with flaggers necessitates utilizing either dynamic message signs (DMS) or traffic control lights
- To control vehicles entering Staging Area, a single two text row DMS facing east will be installed
- Two options to control vehicles leaving the 15-Lane Staging Area
- Recommend the traffic control lights, as they will have less visual impacts
- DMS and traffic control lights not lit when not in use
- Port construction permit required to undertake this work; have not yet applied

2901 Commissioner Street Staging Area – Option 1 Traffic Control



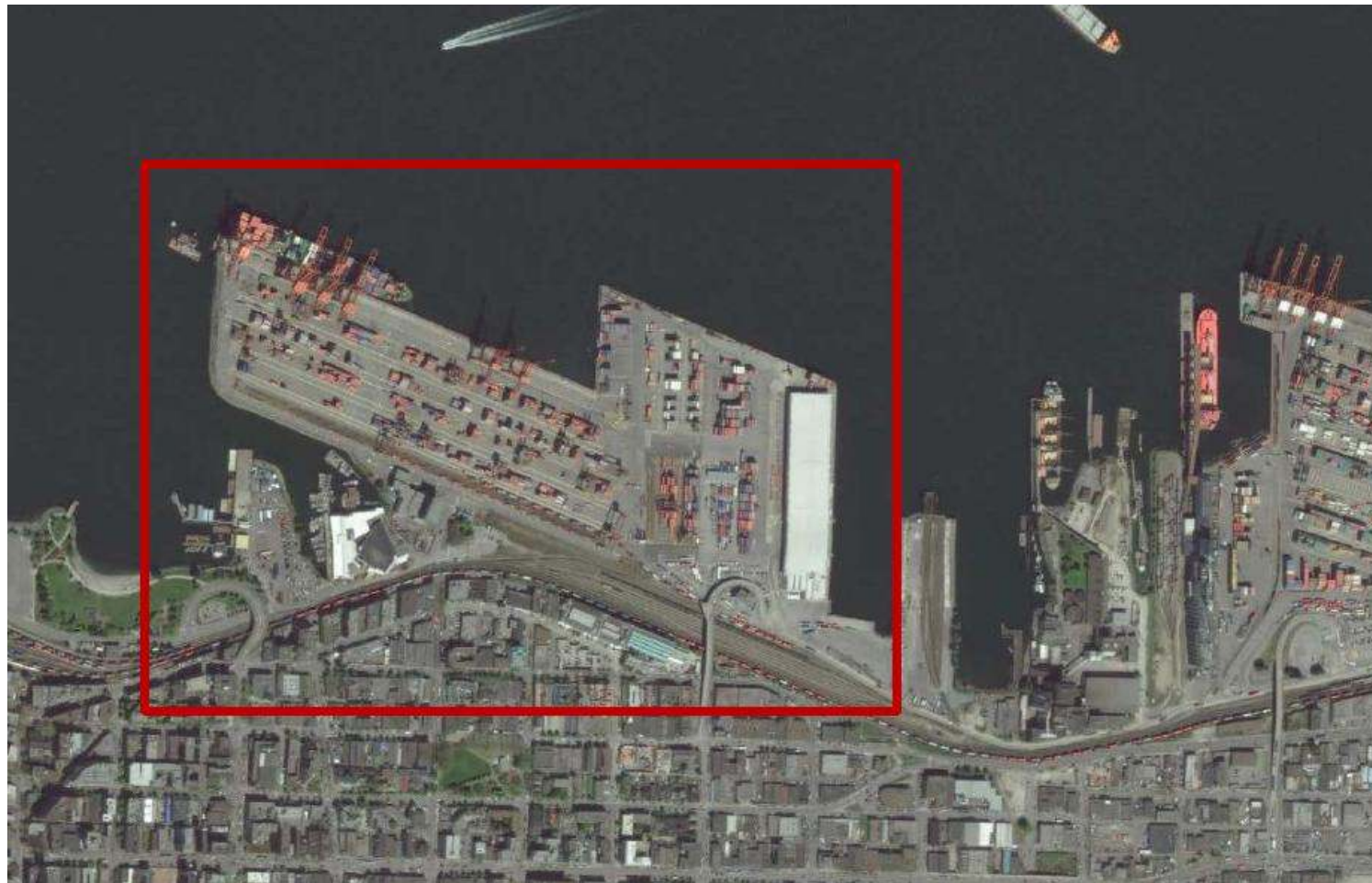
2901 Commissioner Street Staging Area – Option 2 Traffic Control



Centerm Expansion Project

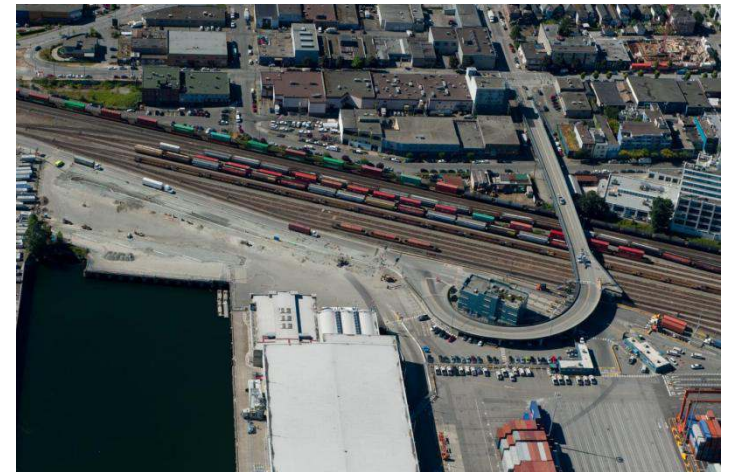
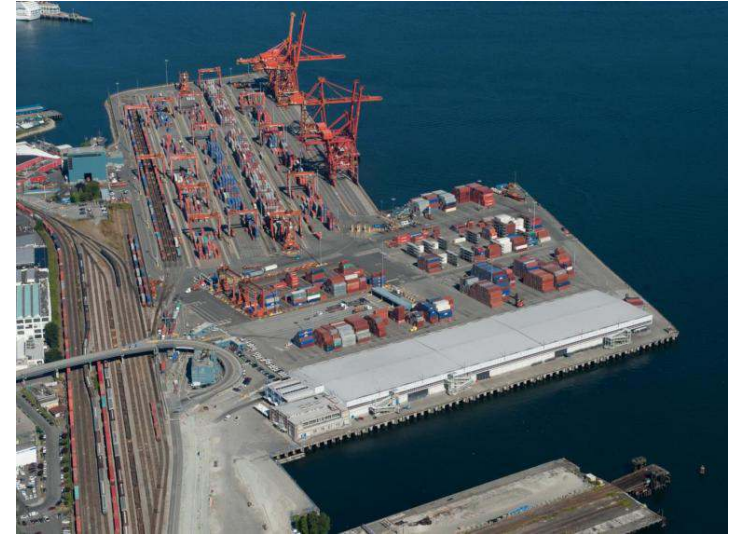


Centerm Expansion Project



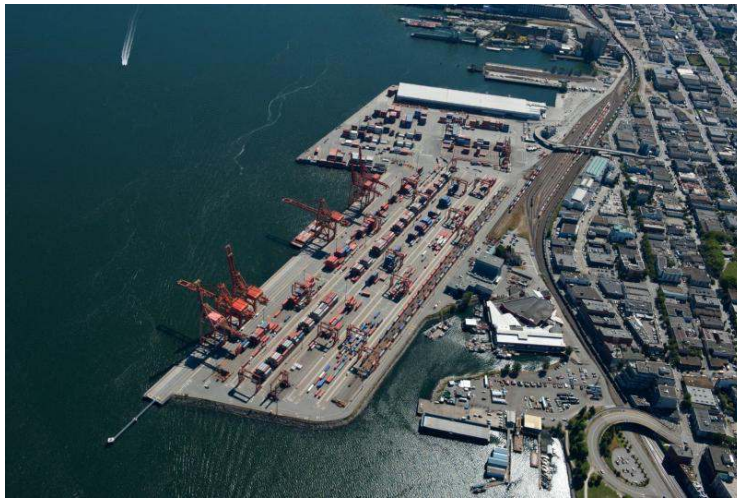
Centerm Expansion Project

- Container traffic will more than double over next 15 years
- Centerm, operated by DP World, handles 1/5 of Port's annual container cargo
- Decision to close Ballantyne Cruise Terminal and consolidate cruise operations at Canada Place provides opportunity to expand Centerm to meet demand



Centerm Expansion Project

- Expand from current 900,000 TEU capacity to a possible 1.8 million TEUs
- Over the next year, Project Team will develop Preliminary Design Options



Centerm Expansion Project



Centerm Expansion Project

- The Preliminary Design Phase will continue until mid 2015
- We are committed to fulsome consultative process with the community and other stakeholders prior to finalizing the design
- Construction could commence in late 2016

Saltworks Technologies

Project Details:

- One year temporary lease;
- Storage of four empty containers (not stacked, containers next to each other).



Port Metro Vancouver Foreshore Stabilization Works at Columbia Containers

Port Metro Vancouver currently reviewing an application from PMV Engineering for a Project Permit.

Project Details:

- Port Engineering-led initiative (works are planned to facilitate Columbia Containers' office relocation);
- Approximately 110m section of shoreline to be repaired (adjacent to the former Ocean Fisheries site);
- Approximately 1,000m³ rock to be transported to the site and spread over a footprint of 950m²;
- Vegetation and existing material along the shoreline impeding rock placement to be removed.

Project timelines:

- Pending approvals, anticipated start date – August 18, 2014 and completion - August 29, 2014.

Port Metro Vancouver Foreshore Stabilization Works at Columbia Containers

