



bringing materials to *life*

Harbour Ready Mix Plant Ready Mix Truck Parking Proposal



General Background

- Lafarge Harbour Ready Mix currently has a lease with the Port of Vancouver and occupies 2095 Commissioner St.
- The plant has been in operation since 2009 supplying concrete to the Greater Vancouver Area
- There have been no lost time incidents or environmental incidents associated with the site since it was opened

Proposal: Overview



- **Lafarge is expanding the parking area and accommodations for ready mix drivers:** due to the desire to improve service and efficiency to our customers, ready mix trucks will be parked at the Port instead of deadheading them from other locations.
- **Separate union contracts amongst employees require separate accommodations for drivers (trailer to be installed)**
- **Project Permit application submitted to Port Metro Vancouver:** to create parking area for ready mix trucks and personal vehicles and install trailer to accommodate drivers

Proposal: Use

Use: 16 ready mix trucks, and 17 personal vehicles to be parked and trailer to be installed to accommodate lockers, eating area and washroom for drivers. The drivers will park their trucks at the end of the day and pretrip their trucks in their area in the morning.

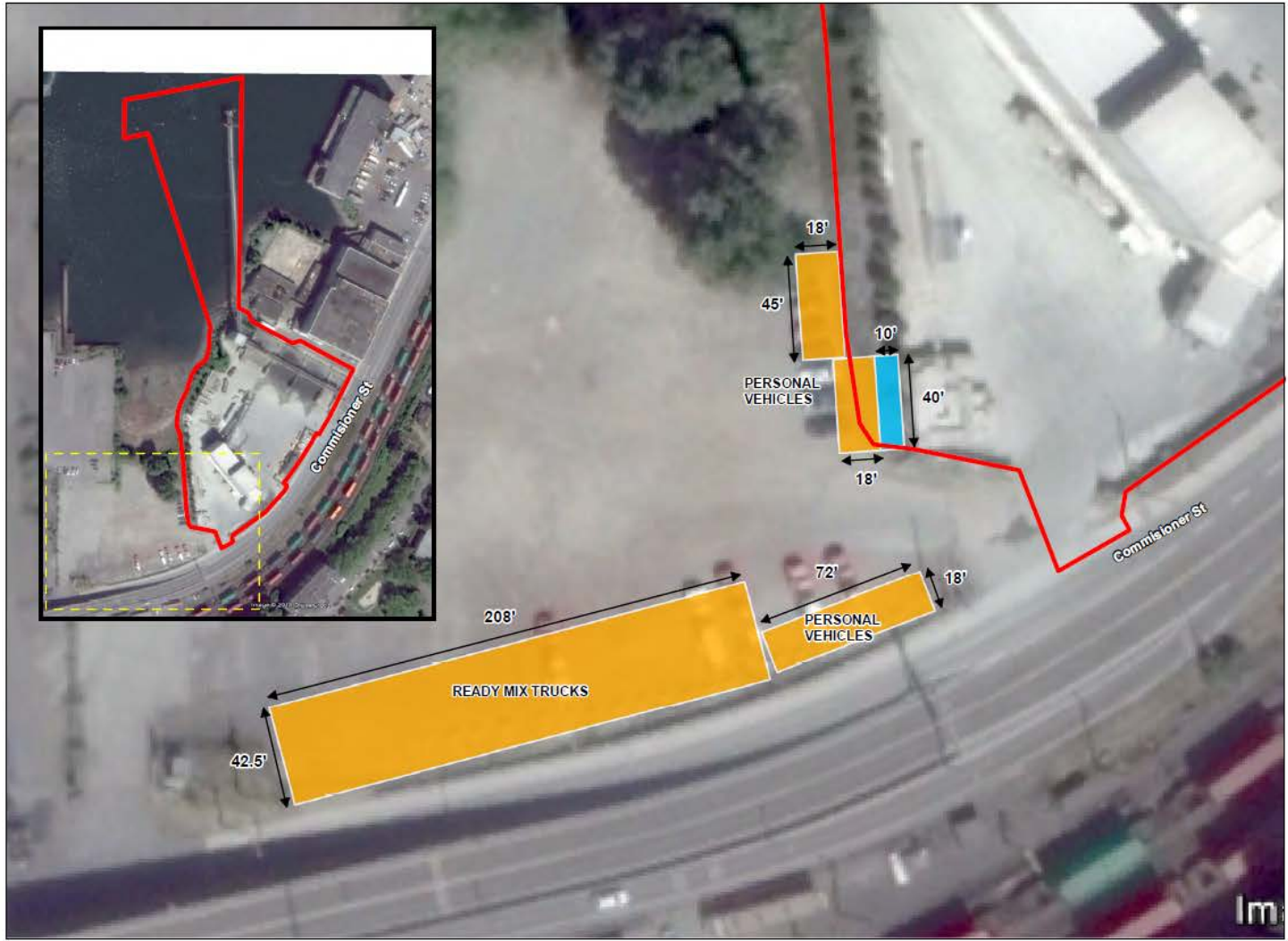
Impacts:

Primary Views: Little to no impact to primary views for residents/neighbours. Trailer will be ~11' in height; ready mix trucks are 13' in height

Noise: Little to no impact on current noise levels in the area (the typical number of trucks being loaded out of the plant will not change)

Air Quality: The trucks that will be parked will be the newest of the Lafarge fleet that meet the newest diesel regulations for emissions

Proposal: Sketch Plan



SKETCH PLAN SHOWING VANCOUVER HARBOUR READY MIX ADDITIONAL LEASE LAYOUT

LEGEND

- EXISTING LEASE BOUNDARY
- CONCRETE PAVEMENT FOR PARKING
- TRAILER

REV.	DATE	NOTES
1	05/08/18	Updated aerial

NAD 1983
UTM Zone 10N



A member of LafargeHolcim

COMMENTS:

Although every effort is made to ensure that this map product is accurate and up to date, some discrepancies in the data may occur due to various data sources beyond our control. This map may be generalized and may not reflect current conditions. Unlabeled features may exist. Do not use this map for navigational purposes. Any comments should be directed to the Land Management Group of Lafarge Western Canada.

Source: data obtained from Natural Resources Canada, City of Vancouver, Google Earth and ESRI Canada Ltd.

DESIGNED BY	Eric Man	PROJECT DATE	May 25, 2018
DRAWN BY	Eric Man	IMAGERY DATE	May 8, 2018
CHECKED BY	NA	SHEET	1 of 1
PROJECT NO.	181638	PAPER SIZE	11" x 17"



Proposal: Site and Timeline

Site: ~11,700 ft² of parking area for ready mix trucks and personal vehicles (concrete pavement)

1 – 10 x 40 ft trailer for driver accommodations

Timeline: (pending permit approval): Construction completed end of November 2016

Questions?