



PORT METRO
vancouver

EAST VANCOUVER PORT LANDS COMMITTEE

Meeting

PMV Offices

April 17, 2014



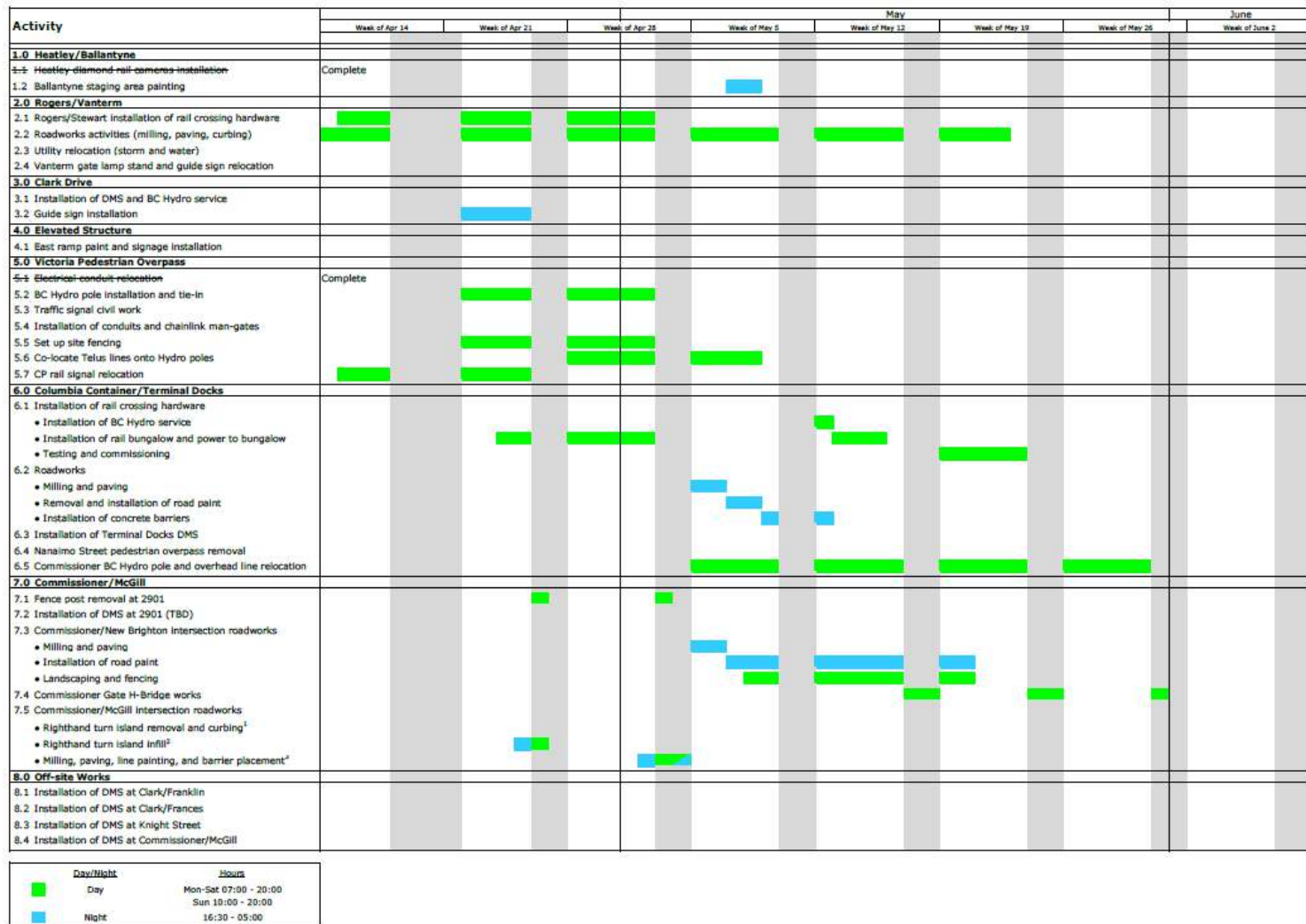
Updates/Upcoming Projects

- South Shore Corridor Project
- Prince Rupert Fisheries Coop Project
- Columbia Containers Projects
- Lafarge East Entrance Reconfiguration Project
- Viterra Pacific Elevators Projects

South Shore Corridor Project

- Completed work:
 - Elevated Structure
 - 2901 Commissioner Staging Area
 - VACS Gates upgrades
- Work to be completed:
 - Victoria Drive Pedestrian Overpass
 - Terminal Dock staging area
 - Zone 4 H-Bridge/Gantry DMS signs
 - Commissioner/McGill Intersection
 - Commissioner/New Brighton Intersection
 - Terminal Dock and Rogers Street rail crossing warning systems

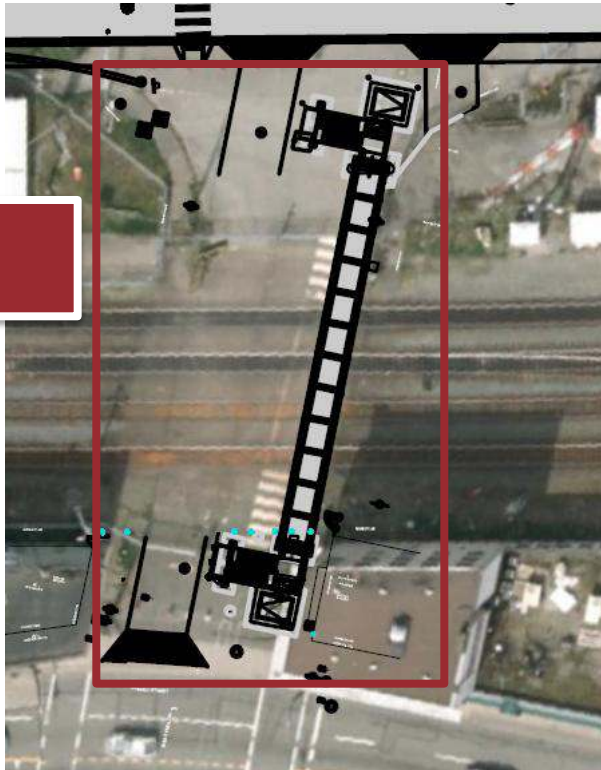
SSCP – Upcoming Schedule



Victoria Drive Pedestrian Overpass

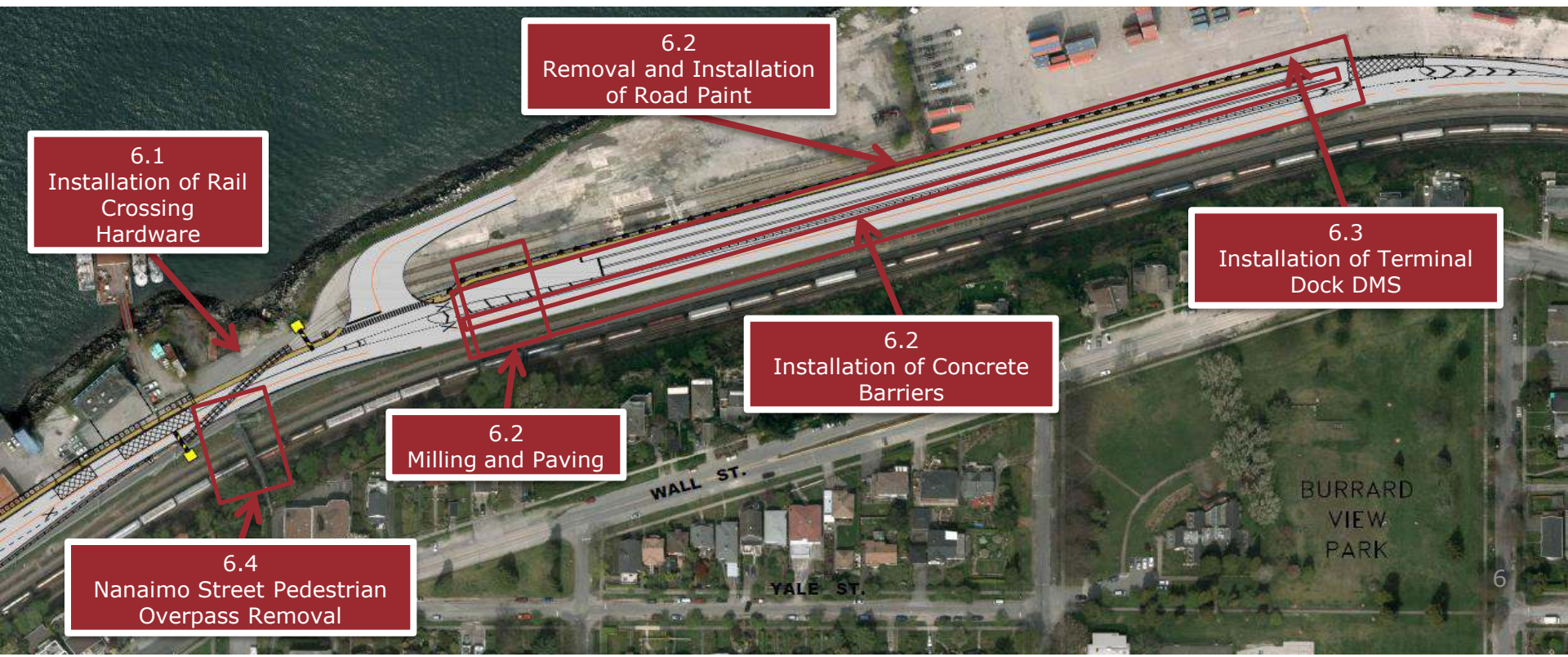
Activity	May								June	
	Week of Apr 14	Week of Apr 21	Week of Apr 28	Week of May 5	Week of May 12	Week of May 19	Week of May 26	Week of June 2		
5.0 Victoria Pedestrian Overpass										
5.1 Electrical conduit relocation	Complete									
5.2 BC Hydro pole installation and tie-in										
5.3 Traffic signal civil work										
5.4 Installation of conduits and chainlink man-gates										
5.5 Set up site fencing										
5.6 Co-locate Telus lines onto Hydro poles										
5.7 CP rail signal relocation										

5.0
Victoria Drive
Pedestrian Overpass



Terminal Dock Staging Area

Activity	May								June
	Week of Apr 14	Week of Apr 21	Week of Apr 28	Week of May 5	Week of May 12	Week of May 19	Week of May 26	Week of June 2	
6.0 Columbia Container/Terminal Docks									
6.1 Installation of rail crossing hardware <ul style="list-style-type: none"> Installation of BC Hydro service Installation of rail bungalow and power to bungalow Testing and commissioning 									
6.2 Roadworks <ul style="list-style-type: none"> Milling and paving Removal and installation of road paint Installation of concrete barriers 									
6.3 Installation of Terminal Docks DMS									
6.4 Nanaimo Street pedestrian overpass removal									
6.5 Commissioner BC Hydro pole and overhead line relocation									



Terminal Dock Staging Area



Commissioner/McGill Area

Activity	May								June
	Week of Apr 14	Week of Apr 21	Week of Apr 28	Week of May 5	Week of May 12	Week of May 19	Week of May 26	Week of June 2	
7.0 Commissioner/McGill									
7.1 Fence post removal at 2901									
7.2 Installation of DMS at 2901 (TBD)									
7.3 Commissioner/New Brighton intersection roadworks <ul style="list-style-type: none"> • Milling and paving • Installation of road paint • Landscaping and fencing 									
7.4 Commissioner Gate H-Bridge works									
7.5 Commissioner/McGill intersection roadworks <ul style="list-style-type: none"> • Righthand turn island removal and curbing¹ • Righthand turn island infill² • Milling, paving, line painting, and barrier placement³ 									



Rail crossing warning system

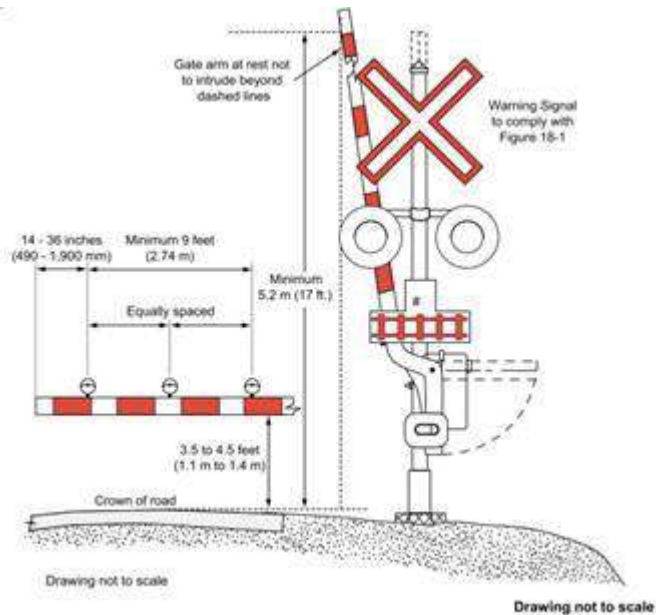


Figure 1 – example of a rail signal and gate structure to be installed at Rogers/Stewart and also at Victoria Drive (as part of Schedule item 2.1 and 5.7 respectively)

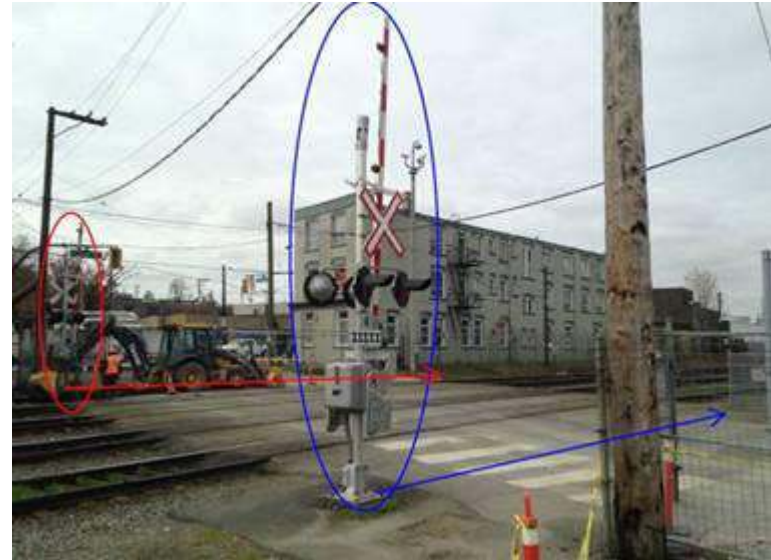


Figure 2 – For reference, the blue lines are the northern signal and the red lines are the southern signal.

SSCP Digital Camera Shields



- Digital Camera Locations



PORT METRO
vancouver

Prince Rupert Fisheries Coop Project

- Project Overview
- Project Scope
- Schedule

LEGEND:

- A) EAST TIMBER DOCK
- B) NORTH TIMBER DOCK
- C) DRAIN
- D) FENDER PILES
- E) ENGINE ROOM
- F) FURNACE ROOM, FREEZER AND ADDITION





Columbia Containers Project Application Update

- Permit application for the **Office Relocation** has been withdrawn;
- Permit application for the **Transloading Facility** has been put on hold;
- **Foreshore Work/Retaining Wall** permit application currently under PMV review;
- New permit application currently under PMV review for a **Modular Office** on the property.

Lafarge Project Application Update

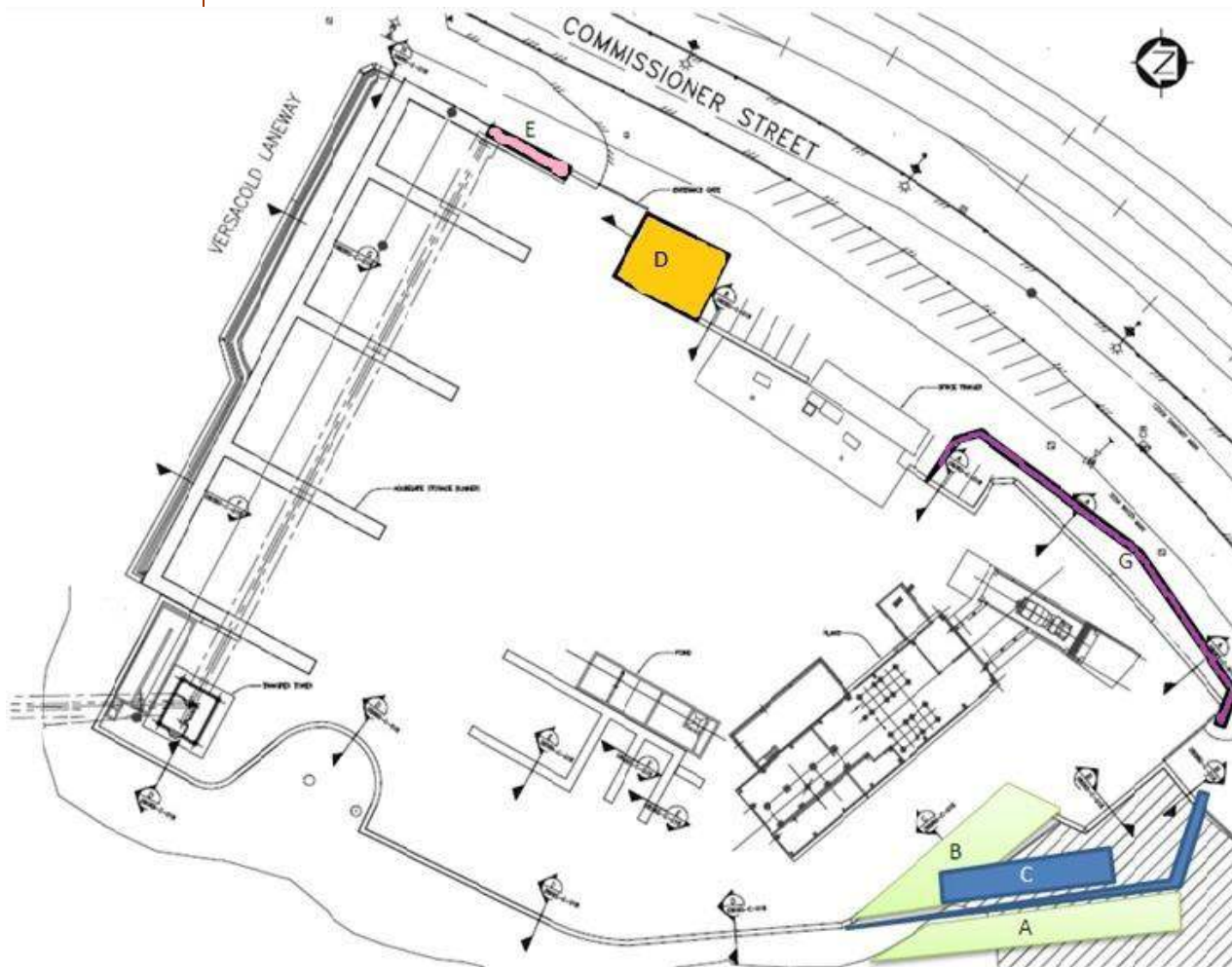
- Port Metro Vancouver has received a project permit application from Lafarge and it is currently being reviewed.

Rationale for Application: South Shore Traffic Bridge

- On/off ramp is now situated immediately west of the current Lafarge exit point (west exit);
- Previous Lafarge internal circulation was one-way;
- Proposed Lafarge internal circulation will be two-way;
- New land provided to Lafarge as compensation.



Lafarge Project Application Update



- A** - Trees and material moved here, former location was **B**
- C** - Proposed transfer ramp area
- D** - Entrance was opened in order to exit yard
- E** - Half of the block wall to be removed
- G** - Block wall moved here in order to change the traffic pattern in yard

Lafarge Project Application Update

Details of the project under review include:

1. East Entrance Reconfiguration

- Widening of entrance from 25 feet to 50 feet, and associated new gate;
- Reconfiguration will allow for trucks to enter and exit the site, heading both east and west;
- Re-arrangement of existing concrete walls around the east entrance/exit to improve line-of-sight;

2. West Exit Reconfiguration

- West exit has been adjusted to reflect new land footprint;
- Will continue to be exit only (westbound traffic);

Lafarge Project Application Update

3. Yard Reconfiguration

- Widening of yard on south portion of property to allow for greater truck maneuverability;
- Re-arrangement of concrete lock-block walls, trees, and fill.

4. Transfer Ramp and Scale

- Transfers unused concrete into a truck;
- 20m long x 3m wide x 2m high.